

General Information

The following General Installation Instructions should be used as a guide for installing your wire cage. Because of the varying job site conditions, and infinite layout possibilities, there is no “recommended” way to install the product. Good common sense and proper safety precautions must be used during installation. The product may be unstable during installation; proper temporary bracing should be used until all hardware is tightened and the product is properly anchored to the floor. Permanent field bracing may be installed at installer’s/owner’s discretion. Install problems arising from job site conditions should be referred to a professional installer.

TOOLS RECOMMENDED

Chalk line & marker	Drill with adjustable clutch and 3/8” nut driver	(2) Step ladders if installing ceiling
Tape Measure	Hammer Drill with 3/8” masonry bit	(2) C clamps or Vise-Grip® type clamps
Level	(2) 9/16” open end wrenches and/or	#1 & #2 Phillips Screw Driver
Hacksaw	(2) 9/16” deep socket ratchets	1/2” deep socket or 1/2” open end wrench

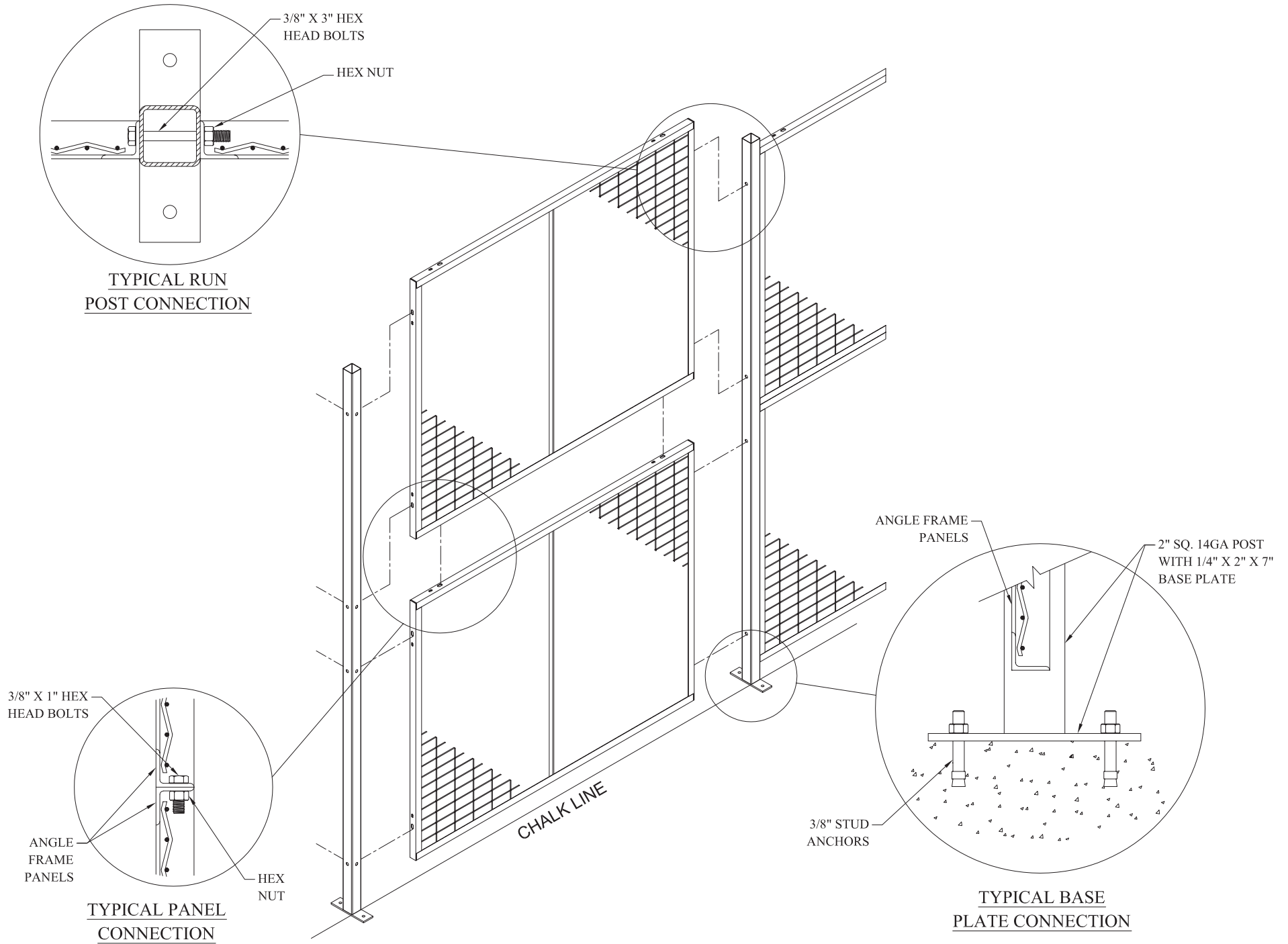
SELF DRILLING SCREW INSTALLATION RECOMMENDATIONS

When installing self drilling screws use a standard variable speed screw gun equipped with an adjustable clutch or depth locating nose piece. Take care not to over tighten or strip, set drill accordingly. DO NOT USE IMPACT TYPE GUN WHEN INSTALLING SELF DRILLING SCREWS. Securely clamp component parts in place before attaching with self drilling screws.

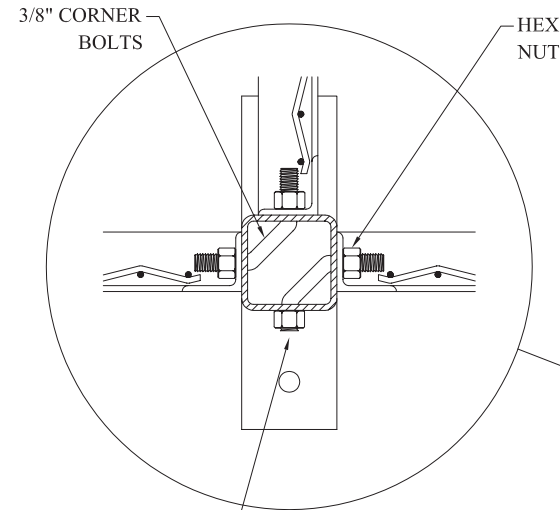
INSTALLER TIPS

1. Installation is best accomplished with a two or three person crew.
2. Before starting, review all installation instructions pertinent to your layout (i.e. panels, doors, etc.)
3. “Face Side” of the partition is the outside, where nuts and bolts will NOT be visible or accessible. “Inside” of the partition has one leg of the panel frame pointing in. Assembly hardware will be on the inside of most layouts.
4. Panels install horizontally between posts, 2” mesh opening should be parallel with floor.
5. Identify all panels by part number. If possible stage parts where they will be installed.
6. Special size panels have metal tags on the mesh and are referenced on drawing.
7. Make sure all posts are installed plumb (vertically perpendicular to floor). Shims (not provided) may be necessary.
8. Use a 3-1/4” spacer block (not provided) to support far end of panel during setup.
9. Begin installation process at a building wall, end or corner of layout.
10. Gauge hinge door opening by width of transom panel.
11. Gauge slide door opening by door width (e.g. 48” between posts for 4’ wide slide door). When necessary, slide door openings may be narrowed to adjust length of adjacent run.
12. Standard hinge, double hinge, and slide doors are universal and may be installed inside or outside swing, left or right hand. Dutch and special doors are not universal and must be installed as shown out on drawing.
13. Installer should cut off any bolts or hardware protruding into aisle ways or around door openings.
14. Installer should touch up all nicks, marks, and scratches with touch up paint provided.

Panels and Posts

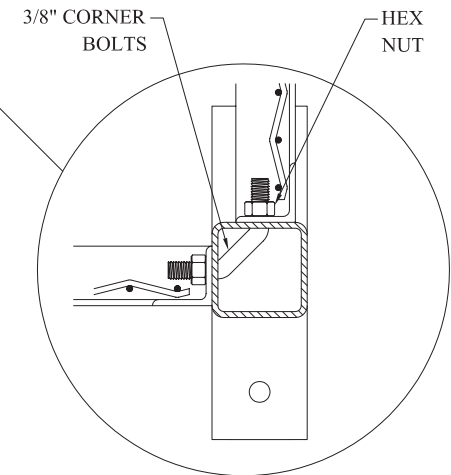
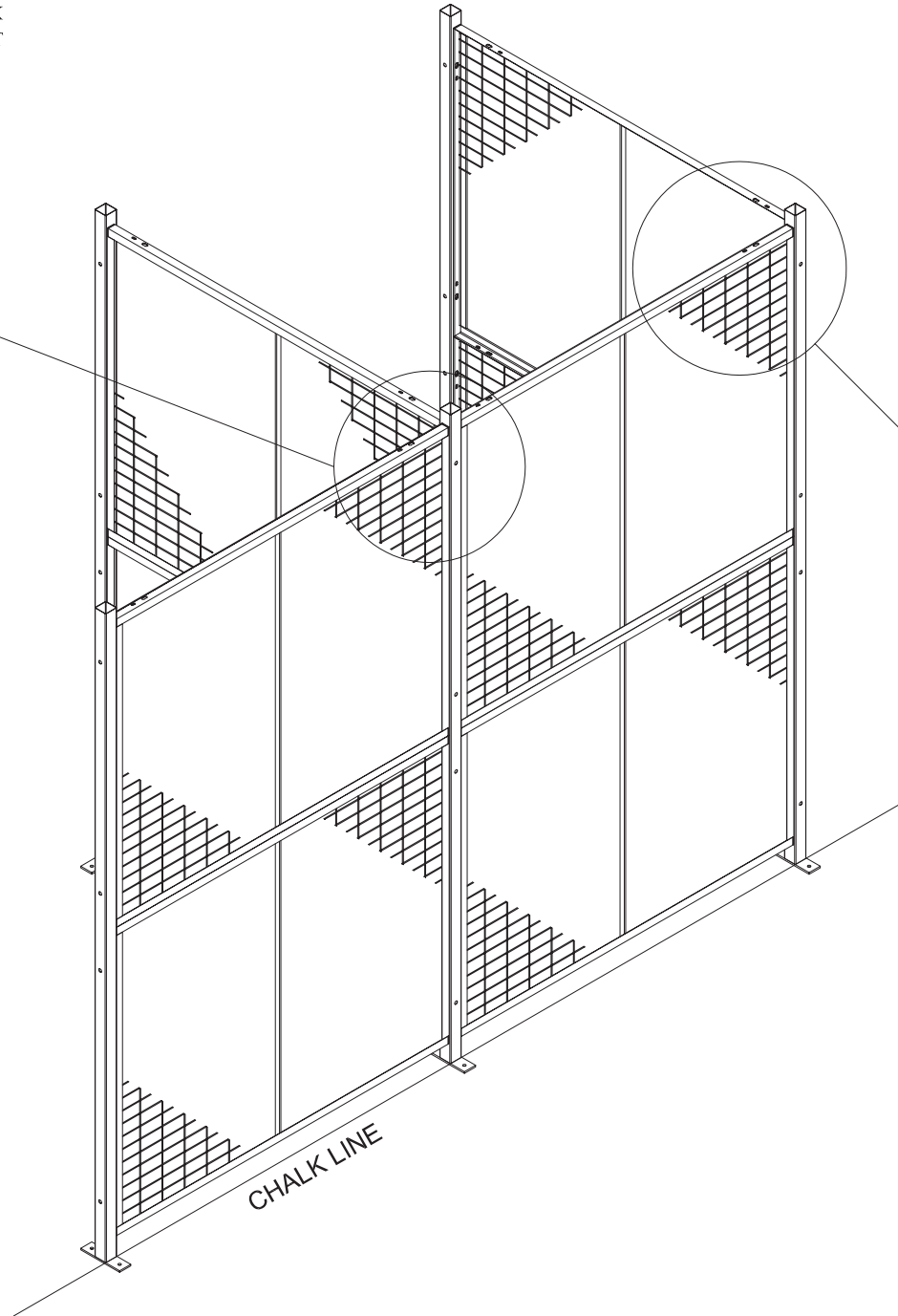


Panels and Posts



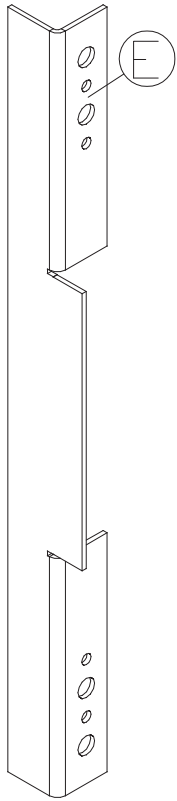
INSTALLER NOTE
HACK SAW
AND DE-BURR ALL
PROTRUDING THREADS

TYPICAL TEE
POST CONNECTION

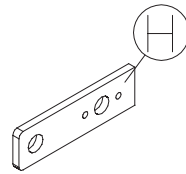


TYPICAL CORNER
POST CONNECTION

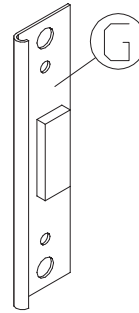
Hinge Door Hardware Pack



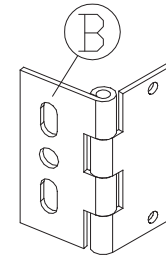
Hinge Door Angle Pick Plate
Quantity (1)
Part# HDCPLI



Hinge Door Flat Padlock Lug
Quantity (1)
Part# HDFLPLLI

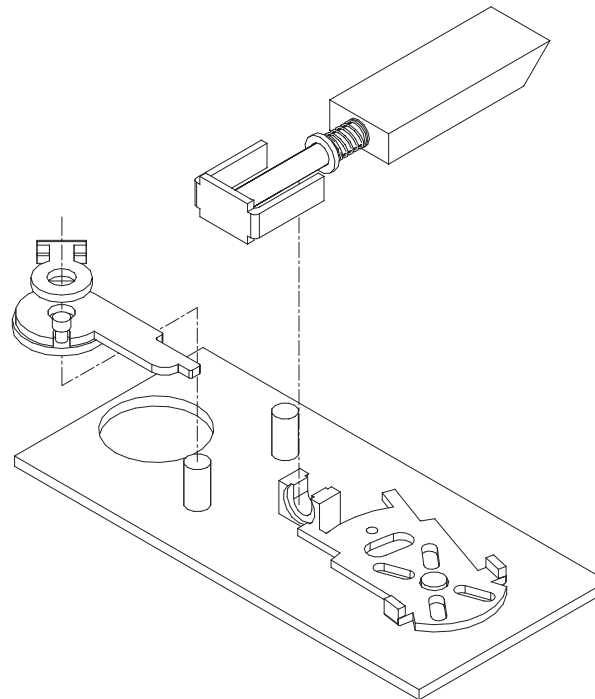


Hinge Door Lock Receiver
Quantity (1)
Part# HDLRLI

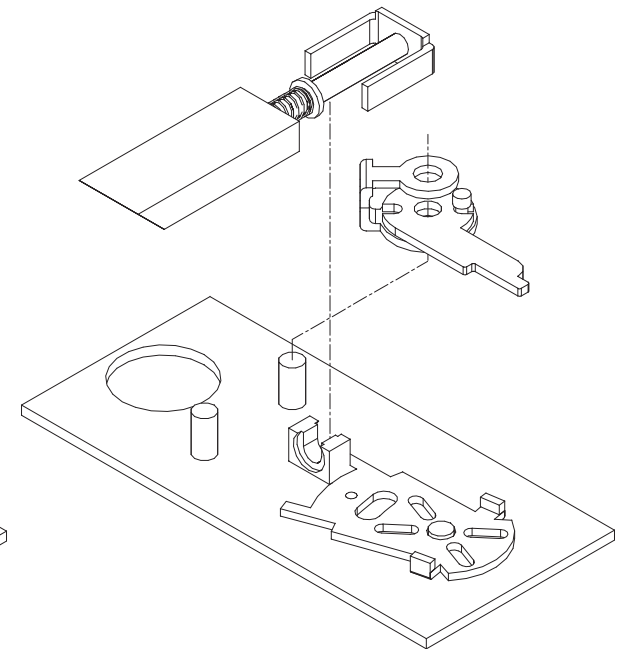


Door Hinge
Quantity (3)
Part# HDHG44IPL

**SEE SUPPLIED LOCK MANUFACTURER
INSTRUCTIONS FOR ASSEMBLY**



RIGHT HAND ASSEMBLY



LEFT HAND ASSEMBLY

- HDFSPK - Fastener Pack (Contents Below)
- (25) FSHOPG- Gray Hole Plugs
 - (8) COBO- 3/8" Corner Bolts
 - (8) FS383- 3/8" x 3" Hex Head Cap Screw
 - (6) FS381- 3/8" x 1" Hex Head Cap Screw
 - (30) FS38N- 3/8" Hex Nut
 - (4) FS38STA- 3/8" Wedge Anchor
 - (1) FSTRNSPK- Self-Drilling Screws (25)

