

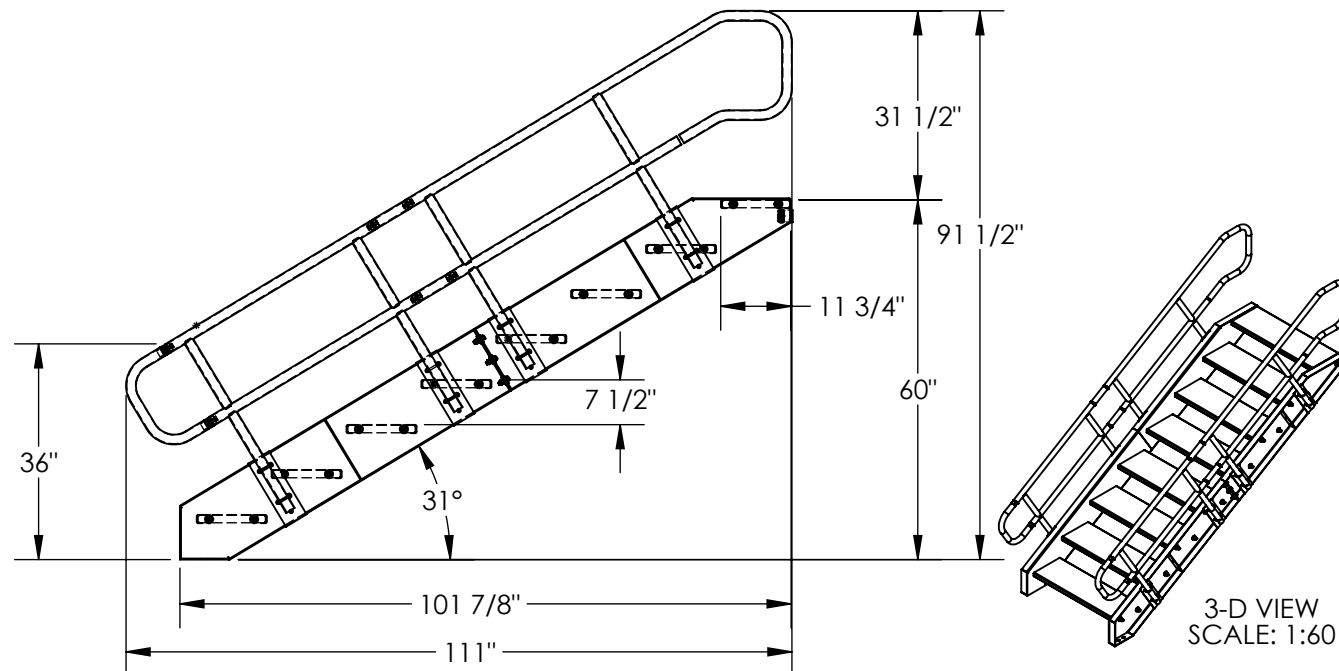
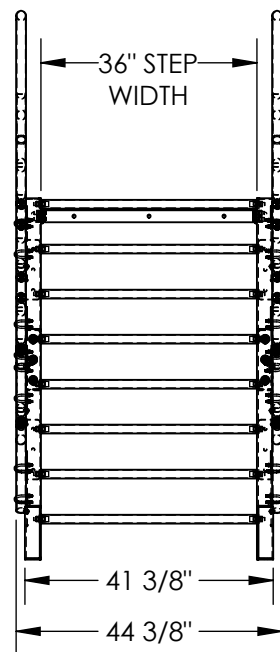
MODULAR STYLE STAIRWAY, STAIR-60

ANY ADDITIONS, DELETIONS, OR OMISSIONS MUST BE CORRECTED ON THIS DRAWING AS THIS DRAWING WILL BE CONSIDERED ALL INCLUSIVE

ALL GRAPHICS PROVIDED ARE FOR REFERENCE ONLY. IF CERTAIN DIMENSIONS ARE CRITICAL PLEASE VERIFY THOSE DIMENSIONS WITH YOUR SALESPERSON

APPROX WEIGHT: 488.29 lbs.

DOES NOT INCLUDE WEIGHT OF POWER OR PACKAGING!!!



3-D VIEW
SCALE: 1:60

DIMENSION TOLERANCE $\pm 1/4"$

STANDARD FEATURES

MODEL NUMBER: STAIR-60

MAX CAPACITY: 1,000 LBS.

STANDARD MODULAR DESIGN WITH BOLT-ON HANDRAIL

UNIT SHIPS KNOCKED-DOWN (ASSEMBLY REQUIRED)

TOP STEP IS FLUSH WITH THE LANDING

CLIMB ANGLE: 31° (APPROX.)

STEP HEIGHT SPACING: 31°

TOP STEP HEIGHT: 60"

RUN DIMENSION: 101 7/8"

OVERALL DIMENSIONS: 44 3/8" W x 111" L x 91 1/2" H

STAIR IS TOUGH BAKED IN POWDER COATED BLUE FINISH

HANDRAIL IS TOUGH BAKED IN POWDER COATED YELLOW FINISH

SPECIAL FEATURES

NONE

APPROVAL

I, THE UNDERSIGNED, AGREE THAT THE PRODUCT AS REPRESENTED SATISFIES DESIGN AND DIMENSION REQUIREMENTS. I ALSO ACKNOWLEDGE MY DUTY TO CONFIRM PRODUCT AND INSTALLATION COMPLIANCE WITH ALL APPLICABLE FEDERAL, STATE AND LOCAL REGULATIONS AND STANDARDS.

UNITS REQUIRING APPROVAL DRAWINGS OR MODIFIED ARE NON-RETURNABLE

☐ As drawn ☐ As marked

Signed: _____ Date: _____

Printed Name: _____

LEAD TIME WILL START UPON RECEIPT OF SIGNED APPROVAL DRAWING

DISTRIBUTOR'S NAME:		P.O.#
DS-STAIR-60		X
DRAWN BY: NBE		W.O.#
DATE: 10/18/2021		X
REFERENCE: X	SCALE: 1:32	SALES: X
QUOTED LEAD TIME: X	QUOTE # X	FILE NAME:
		44-007-719