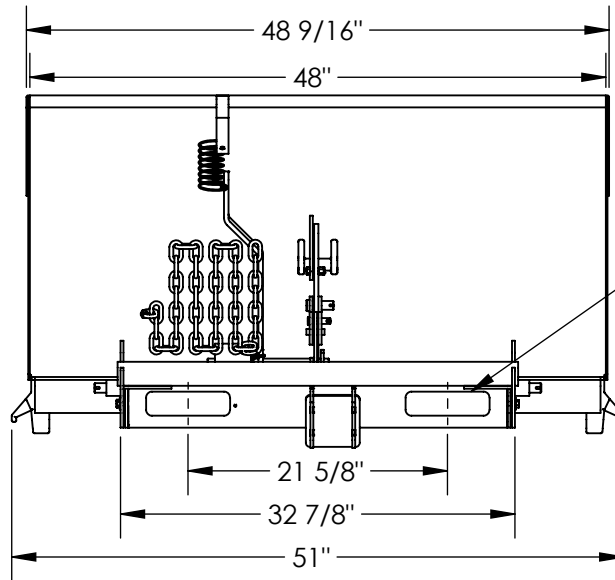


# BUMP AND DUMP 90° HOPPER - H-100-MD-BD

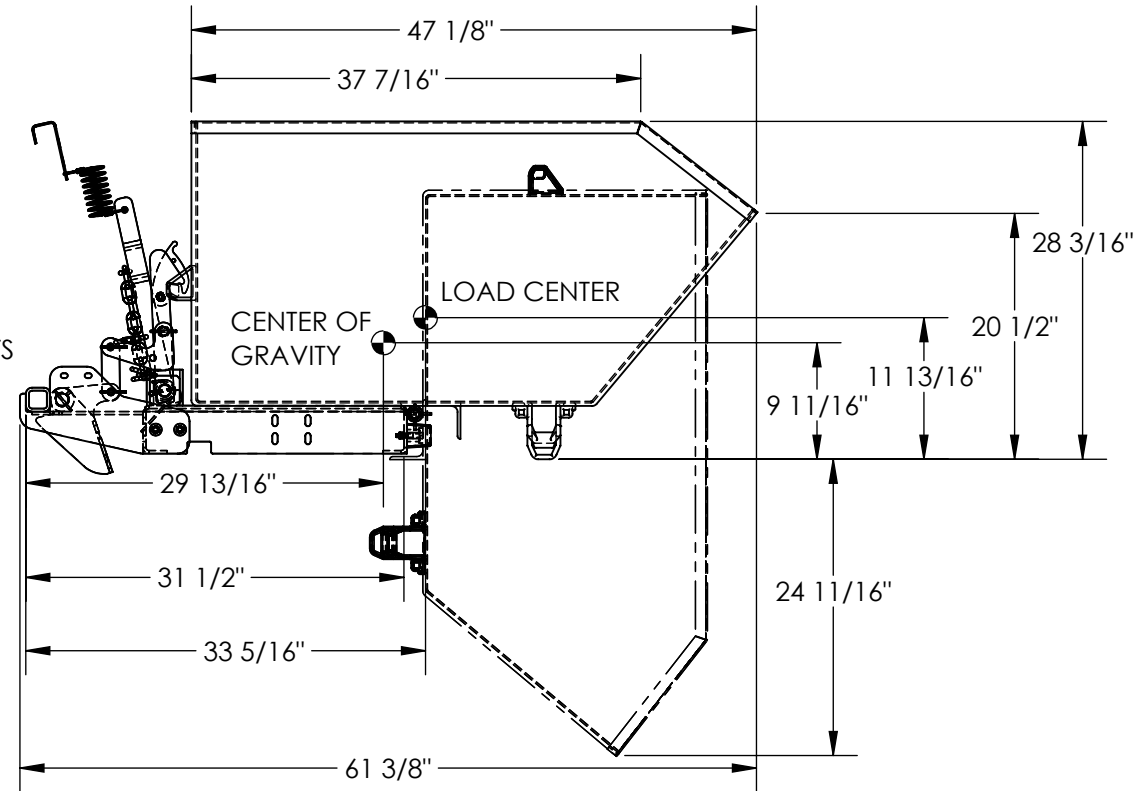
APPROX WEIGHT: 402 lbs.  
 DOES NOT INCLUDE WEIGHT OF POWER OR PACKAGING!!!

\*\*\* ANY ADDITIONS, DELETIONS, OR OMISSIONS MUST BE CORRECTED ON THIS DRAWING AS THIS DRAWING WILL BE CONSIDERED ALL INCLUSIVE \*\*\*

ALL GRAPHICS PROVIDED ARE FOR REFERENCE ONLY. IF CERTAIN DIMENSIONS ARE CRITICAL PLEASE VERIFY THOSE DIMENSIONS WITH YOUR SALESPERSON



7" X 2" USABLE  
 FORK POCKETS



APPROX. WEIGHT / LOST LOAD = 402 LBS.  
 MINIMUM EFFECTIVE THICKNESS =  
 FORK LENGTH MINUS 31 1/2"

NEVER EXCEED LOAD CENTER  
 RATING PER FORKTRUCK  
 MANUFACTURERS GUIDELINES.  
 DO NOT USE THIS FORK TRUCK  
 ATTACHMENT IF LOAD WILL  
 EXCEED FORK TRUCK MANUFACTURER'S  
 LOAD CENTER RATING

## STANDARD FEATURES

MODEL NUMBER IS H-100-MD-BD  
 OVERALL WIDTH IS 51"  
 INSIDE WIDTH IS 48"  
 OVERALL LENGTH IS 61 3/8"  
 OVERALL HEIGHT IS 28 3/16"  
 MAX CAPACITY IS 4,000 LBS.  
 VOLUME IS 1 CU. YRDS.  
 HOPPER IS TOUGH BAKED IN POWDER  
 COATED BLUE FINISH  
 BUMP AND DUMP MECHANISM IS  
 TOUGH BAKED IN POWDER COATED YELLOW FINISH

**\*\* ADDITION OF CASTERS MAY  
 CHANGE WEIGHT CAPACITY  
 BASED ON CASTER RATING**

## SPECIAL FEATURES

NONE

DIMENSION TOLERANCE ± 1/4"

<b>APPROVAL</b>	I, THE UNDERSIGNED, AGREE THAT THE PRODUCT AS REPRESENTED SATISFIES DESIGN AND DIMENSION REQUIREMENTS. I ALSO ACKNOWLEDGE MY DUTY TO CONFIRM PRODUCT AND INSTALLATION COMPLIANCE WITH ALL APPLICABLE FEDERAL, STATE AND LOCAL REGULATIONS AND STANDARDS.	
	<b>UNITS REQUIRING APPROVAL DRAWINGS OR MODIFIED ARE NON-RETURNABLE</b>	
	[ ] As drawn      [ ] As marked	
	Signed: _____ Date: _____	
Printed Name: _____		
<i>LEAD TIME WILL START UPON RECEIPT OF SIGNED APPROVAL DRAWING</i>		

DISTRIBUTOR'S NAME:		P.O.#
		X
		W.O.#
		X
DRAWN BY:	DATE:	SALES:
	2/3/2022	X
REFERENCE: X	SCALE: 1:16	FILE NAME:
QUOTED LEAD TIME: X	QUOTE #	37-007-184
	X	