

ASSEMBLY & ATTACHMENT INSTRUCTIONS FOR SWIM, DOCK & PONTOON BOAT LADDERS

▶▶▶ NOTE: MUST USE WD40/GREASE ON NUTS/BOLTS & HAND TIGHTEN ONLY ◀◀◀

*DISCLAIMER: JIF MARINE DOES NOT WARRANTY NEGLIGENCE ON THE INSTALLATION OF HARDWARE MUST FOLLOW INSTRUCTIONS BELOW

MODELS

ASE, ASH, ASH2, ASH7, ASL
ERR4, ERR7

ASSEMBLY OF LADDER HARDWARE

Ladder Hardware Kit Contains:

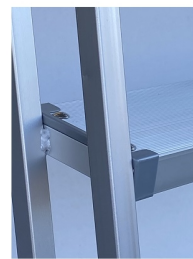
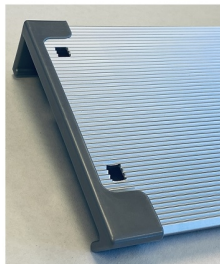
1/4 x 1/2" Carriage bolts
1/4 - 20 nylon locknuts

- For assembly of the steps to the side rails secure each step with (4) 1/4 x 1/2" Carriage bolts and (4) 1/4 - 20 locknuts.
- Step with long lip goes to front of handle

LADDER ATTACHMENT

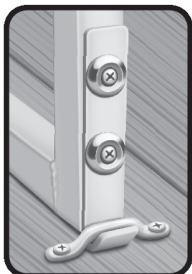
Ladder Attachment Hardware Kit Contains:

2 each 5" J-hooks
4 each 1/4 x 1-1/2" Phillips head bolts
4 each 1/4 - 20 nylon locknuts
2 each footman's loops
4 each 10 - 24 x 2" Phillips head bolts
4 each nylon locknuts
4 each 1/2" OD flat washers



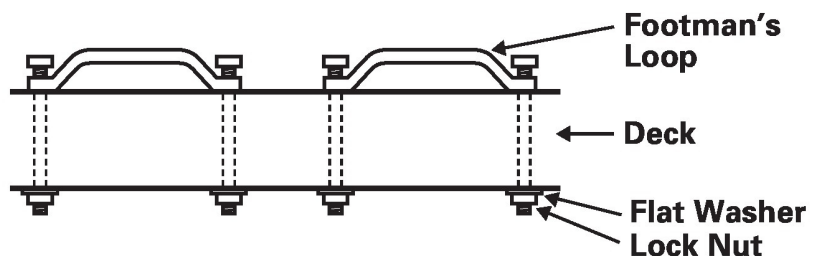
NEW STEP GUARDS
2 PER STEP
EASILY SLIDES ON
BEFORE
INSTALLATION
OF STEPS

- To attach the J-hooks to the ladder secure the J-hooks (with the hook portion of the J facing upward) using the 1/4 x 1-1/2" Phillips head bolts with the locknuts.
- The footman's loops are secured to the top surface of your raft, dock or boat using the flat washers and locknuts on the underside as pictured.
- Use ladder to determine the placement of the footman's loops.



Stainless steel footman loops included with all ladders allow easy attachment and release from dock.

Ladders can also be bolted directly to dock.



SAFETY Any ladder can be dangerous if installed or used improperly

- ALWAYS**
- Face ladder when going up or down
 - Step in the center of ladder steps, not on either side
 - Restrict use of the ladder to one person at a time
 - Check all steps and hardware before using
 - Keep fingers and toes clear of pinch points
 - Avoid diving or jumping from ladder