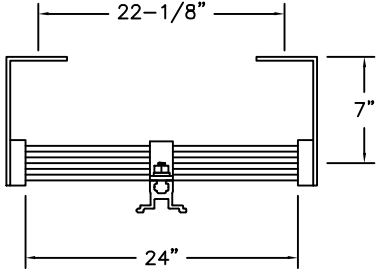


TUBULAR FIXED LADDER w/WALK-THRU & FALL ARREST SYSTEM

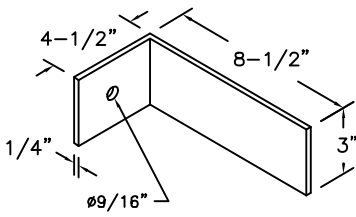
FLH-06-FAS

NOTE:
ALL BOLTS/FASTENERS
NECESSARY TO ANCHOR
LADDER ARE BY OTHERS.



PLAN

(HANDRAILS OMITTED
FOR CLARITY)



BRACKET DETAIL

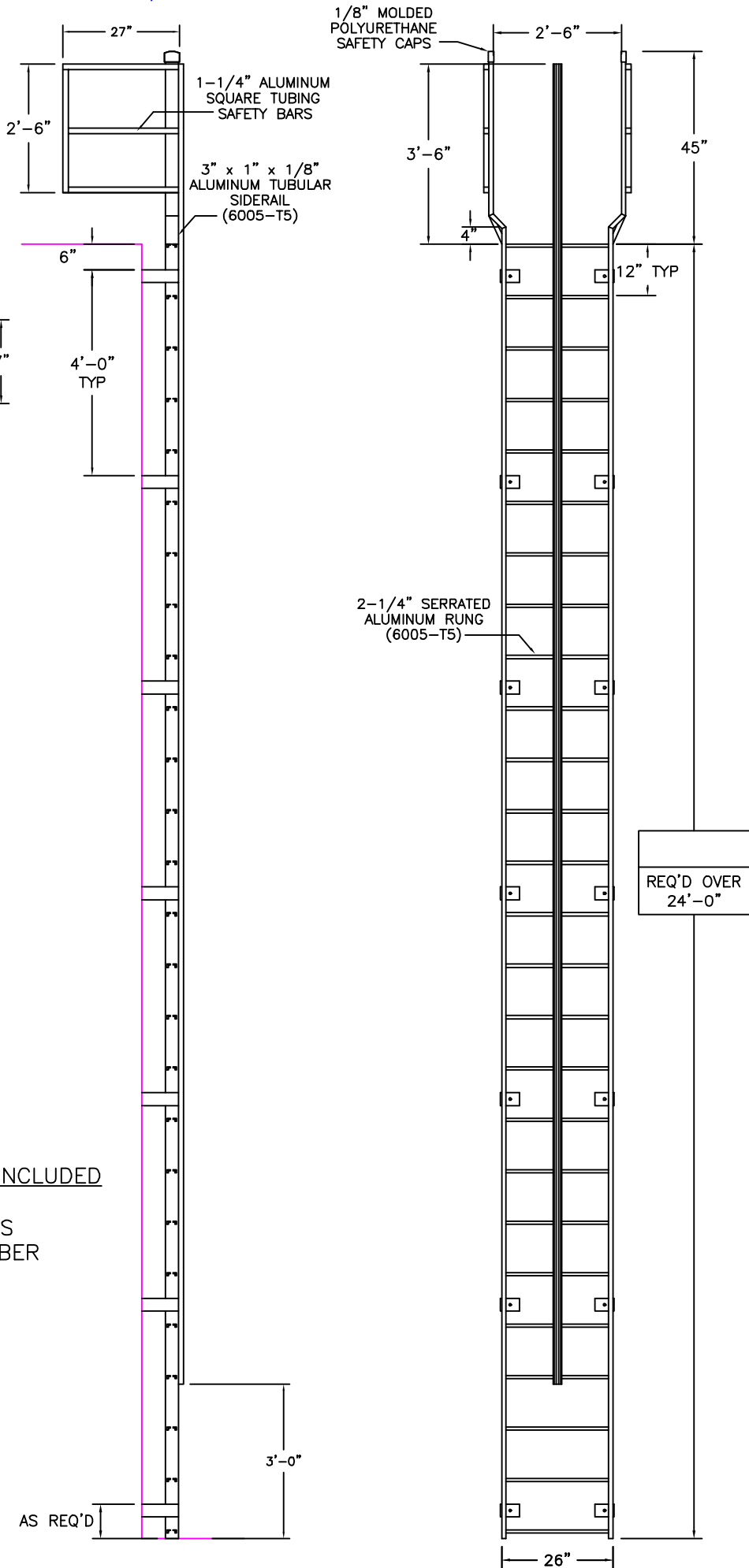
FAS INCLUDED PARTS

- CARRIER RAIL
- RUNG CLAMPS
- (2) LOCKING TROLLEYS
- SPLICE KIT (AS REQ'D)

ITEMS REQ'D BUT NOT INCLUDED

- (1) FULL BODY HARNESS
WITH D-RING PER CLIMBER

FACTORY FINISH
ALUMINUM-MILL FINISH



LADDER RATED AT 1,500 LBS

LADDERS MANUFACTURED BY PRECISION LADDERS, LLC
COMPLY WITH OSHA 1910 SUBPART D AND ANSI 14.3

| | | |
|------------|---------------------------|--------|
| PROJECT | LADDER RATED AT 1,500 LBS | |
| | ARCHT OR ENGR. | DATE |
| WORK ORDER | PURCHASER | MODEL# |
| DATE | 2/11/19 | FLH- |
| BUILT BY: | CHECKED BY: | QTY. |
| | DNH | |