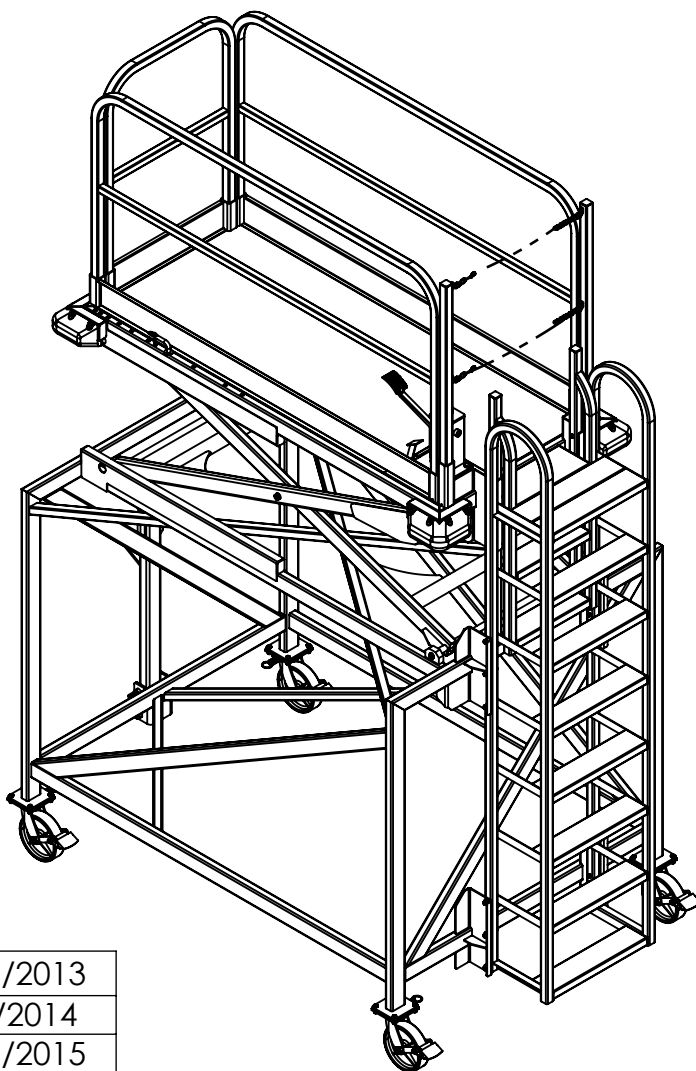


CLYDE

15F3065 OWNER'S MANUAL



ISSUED	3/19/2013
REVISED	5/8/2014
REVISED	9/16/2015
REVISED	11/14/2022

B-5 MAINTENANCE STAND **88" - 138"**



CLYDE MACHINES INC.
P.O. BOX 194
GLENWOOD, MN 56334
TEL. (320) 634-4504
FAX. (320) 634 4506

WARRANTY

Clyde Machines Inc. warrants all goods of its manufacture to be free from defects caused by faulty material or poor workmanship and will at its option repair or replace, without charge, or allow credit for any such goods found on examination by Seller to be defective under normal use and service within one year from date of shipment to the Buyer, provided Seller is promptly notified in writing upon discovery of such defects. Goods shall not be returned to Seller or modified at Seller's expense without Seller's consent in writing. This warranty does not cover damage caused by improper use, installation, overloading, accident, neglect or harmful alterations or repairs made by others, weather conditions and acts of God. The Buyer's remedies with respect to defective good shall be exclusively limited as above provided and in no event shall the Seller be liable for consequential damage. Components purchased by the Seller are subject to the warranty policy of the original equipment manufacturer, and Seller will assist the Buyer in resolving any warranty claims if such action is required.



CLYDE MACHINES INC.
P.O. BOX 194
GLENWOOD, MN 56334
TEL. (320) 634-4504
FAX. (320) 634 4506

INTRODUCTION:

This manual contains instructions for operating and maintaining Model 15F3065 Maintenance Stand manufactured by Clyde Machines, Inc. Glenwood, Minnesota. Illustrated breakdowns of all parts used in the maintenance stand are included for identification of parts and parts ordering information.

PREPARATION FOR USE:

The maintenance stand has been lubricated and adjusted at the factory and no additional preparation is required. A general inspection should be made to determine if any damage was sustained in transit. If any damage was sustained the transportation company should be notified immediately.

STAND SAFETY:

WARNING Failure to follow all instructions may result in serious injury.

- **General Safety**
 - Read all labels
 - Only use the stand if you are in good physical condition.
 - The stand is designed to support a maximum load of 500 pounds.
 - **DANGER!** Metal conducts electricity. This stand is not electrically insulated.
 - Only use the stand on level ground.
 - Never place anything under or attach anything to the stand to gain height or adjust for uneven surfaces.
 - When use is required on a slippery surface, secure the stand from excessive movement.
- **Proper Climbing and Use**
 - Do not over-reach as such that would cause you to lose your balance. Keep the center of your waistline within the platform foot print. Use caution with climbing, pushing, or pulling anything while on the stand.
 - Never move the stand while climbing or standing on it.
 - Never stand on the handrails.
- **Proper Care and Storage**
 - Always keep the stand clean of all foreign materials.
 - Never store material on the stand.



OPERATING INSTRUCTIONS:

A. Raising the Maintenance Stand

1. Operate hydraulic foot pump until platform is at desired working height.
2. Insert the safety pins (2X) behind the guide wheel. Slowly lower the platform using the hydraulic foot pump release until the platform load is on the safety pins.
3. Move stand to desired position and lock the brakes on the casters (4X).

B. Lowering the Maintenance Stand

1. Unlock the caster brakes.
2. Pull the stand away from the working position.
3. Raise the stairway slightly by operating the hydraulic foot pump until the load is removed off the safety pins. Remove the safety pins.
4. Operate the release on the hydraulic foot pump to lower the stand.

C. Towing the stand

1. The swivel on the casters opposite the towbar end should be locked while towing the stand using the swivel locks on the casters.

Caution: Always lock caster brakes after positioning stand. Always insert the safety pins after raising the platform.

MAINTENANCE:

- **Daily**
 - Check for any loose or missing hardware, tighten or replace as necessary.
 - Check the corner bumpers for damage, replace as necessary.
 - Check for structural frame damage.
 - A damaged stand should not be used until repaired or replaced.
- **Annually**
 - Check the hydraulic oil level. It should be 1-1/2" from the top of the tank when the stand is in its lowest position. If necessary to add oil use Mobil DTE 10 Excel 15 or equivalent.
 - Full tank capacity is .35 gallons or 44.5 fluid ounces.
- **As Required**
 - Replace damaged items as necessary.



CLYDE MACHINES INC.
P.O. BOX 194
GLENWOOD, MN 56334
TEL. (320) 634-4504
FAX. (320) 634 4506

BOLT TORQUE CHART

Torque Values of Grade 5 Fine Thread (SAE) Fasteners

All Torque Specified in FT.-LBS. (Dry)

Bolt Dia.	1/4-28	5/16-24	3/8-24	7/16-20	1/2-20	5/8-18	3/4-16	7/8-14	1-12
Install Torque	9	20	35	55	90	170	297	474	722

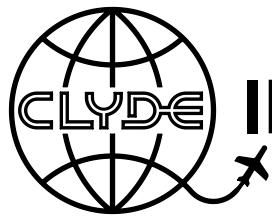
Torque Values of Grade 5 Course Thread (SAE) Fasteners

All Torque Specified in FT.-LBS. (Dry)

Bolt Dia.	1/4-20	5/16-18	3/8-16	7/16-14	1/2-13	5/8-11	3/4-10	7/8-9	1-8
Install Torque	9	17	31	49	75	150	267	429	644

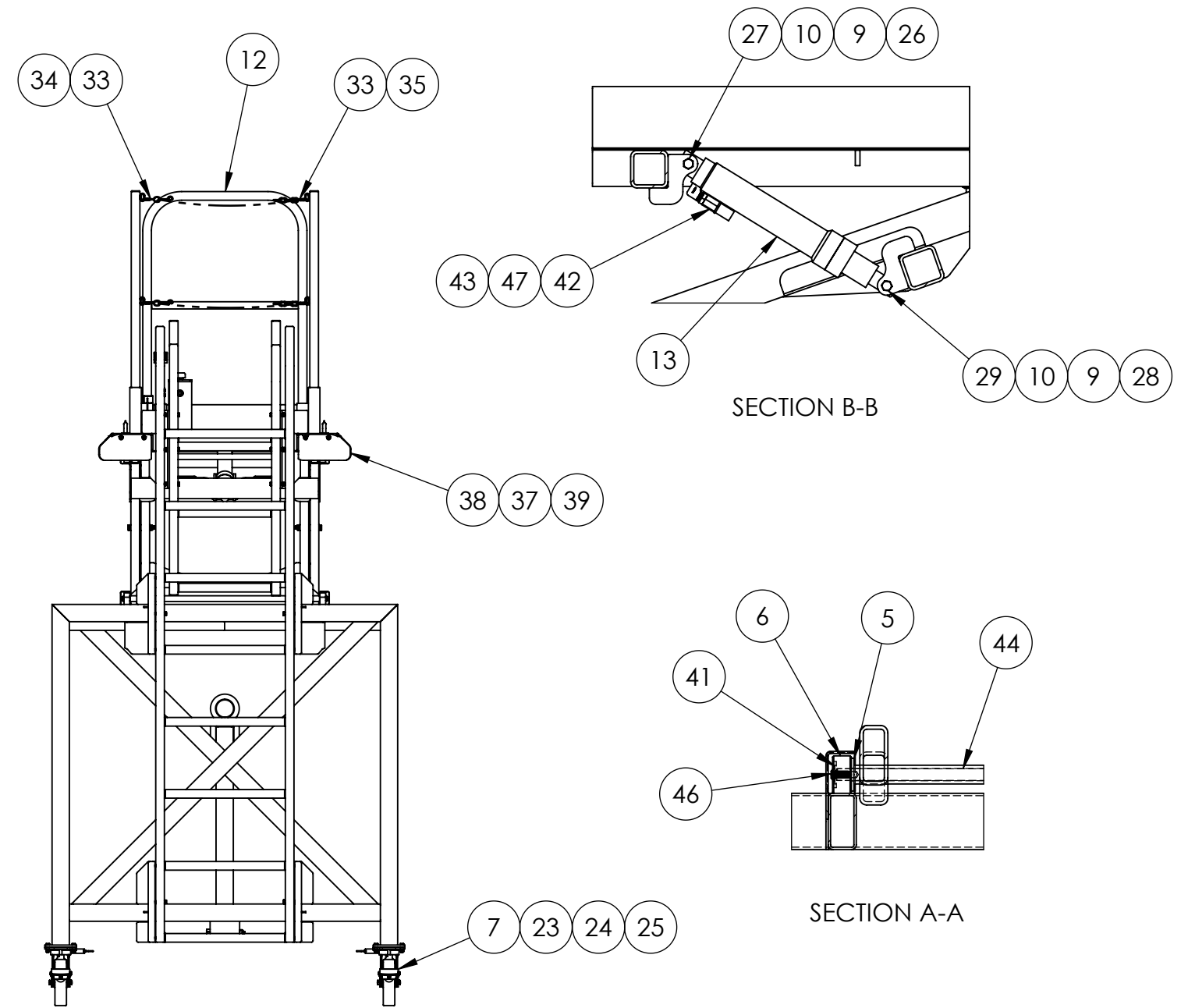
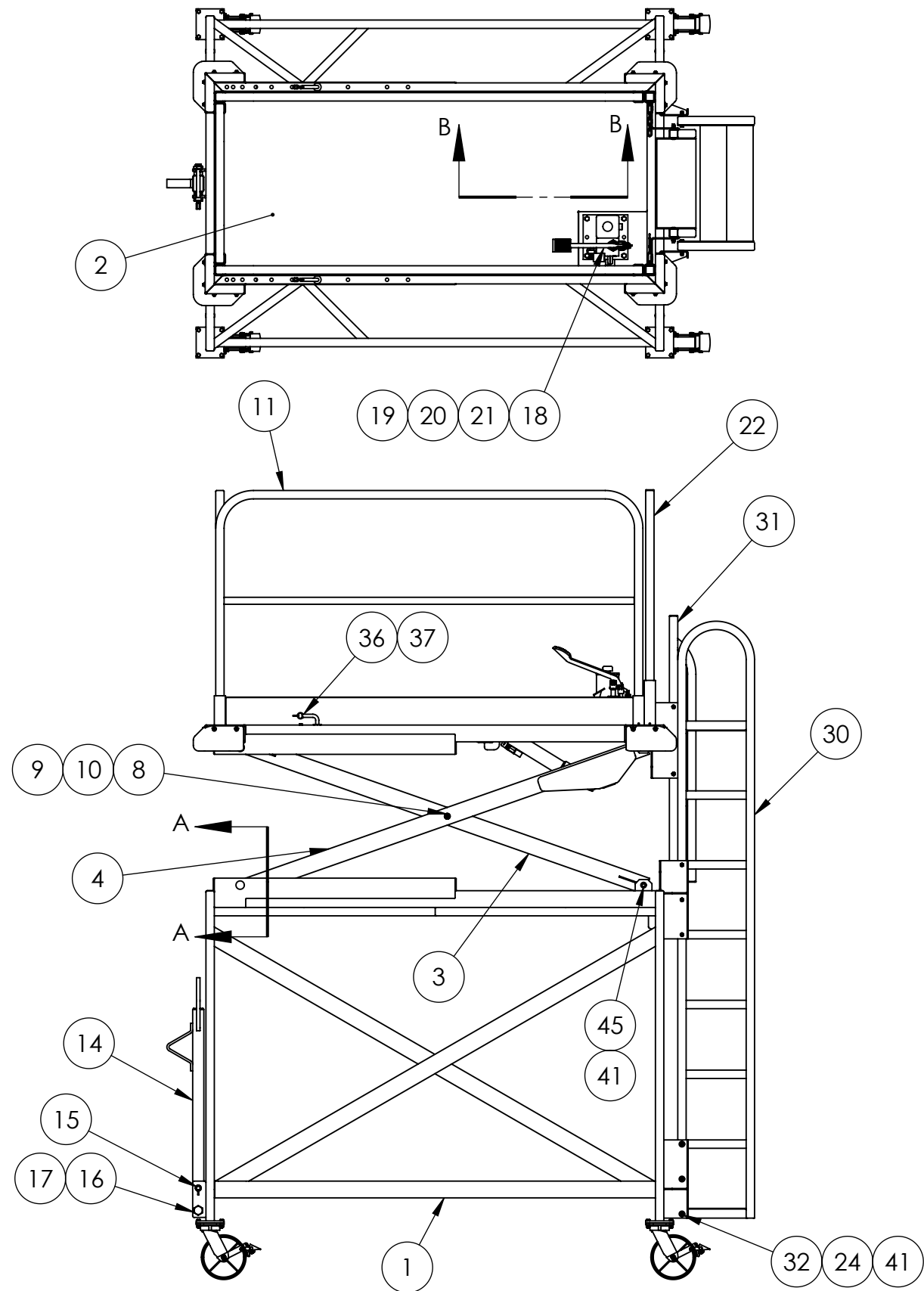
LOAD TESTING

It is recommended that the maintenance stand be load tested every 5 years or after a significant damage event and subsequent repairs. With the platform adjusted to the lowest position, a load twice the rated load should be placed on the center of the platform and the entire stand be observed for any material or weld failures. The load should be tethered in such a way that in the event of a failure of the stand, the load will not fall more than several inches.



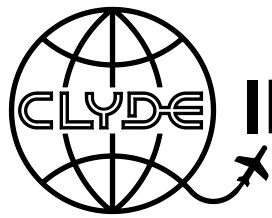
ILLUSTRATED PARTS CATALOG

15F3065 ASSEMBLY



SECTION B-B

SECTION A-A



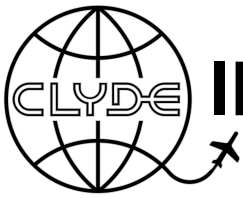
ILLUSTRATED PARTS CATALOG

15F3065 ASSEMBLY

ITEM NO.	PART NUMBER	QTY.	DESCRIPTION
1	15W6155	1	BASE FRAME WELD
2	15W6144	1	UPPER PLATFORM WELD
3	15W6145	1	INNER SCISSORS
4	15W6146	1	OUTER SCISSORS
5	15O333	4	5/8" WASHER
6	15L24803	4	SCISSOR ROLLER
7	15O4471	4	SWIVEL CASTER WITH BRAKE
8	15O6108	2	5/8" DIA, 1/2-13 THRD x 3-1/2" LG. SS SHOULDER BOLT
9	15O302	4	1/2" AN WASHER
R 10	15O3989	4	1/2-13 UNC NYLOK JAM NUT
11	15W6149	2	HANDRAIL WELD, SIDE
12	15W6150	1	HANDRAIL WELD, FRONT
13	15O5590	1	CYLINDER
14	15W5965	1	TOWBAR WELDMENT
15	15O5963	1	SPRING PLUNGER
R 16	15O5754	1	1-8 x 6" LG. HHCS ZINC
R 17	15O7280	1	1-8 NYLOK JAM NUT
18	15O6109	1	HYDRAULIC FOOT PUMP
19	15O255	4	1/2" WASHER
R 20	15O1718	4	1/2-13 NYLOK NUT
R 21	15O156	4	1/2-13 x 1-1/2" LG. HHCS ZINC
22	15W6151	2	HANDRAIL POST WELD
R 23	15O134	16	3/8-16 x 1-1/4" HHCS ZINC

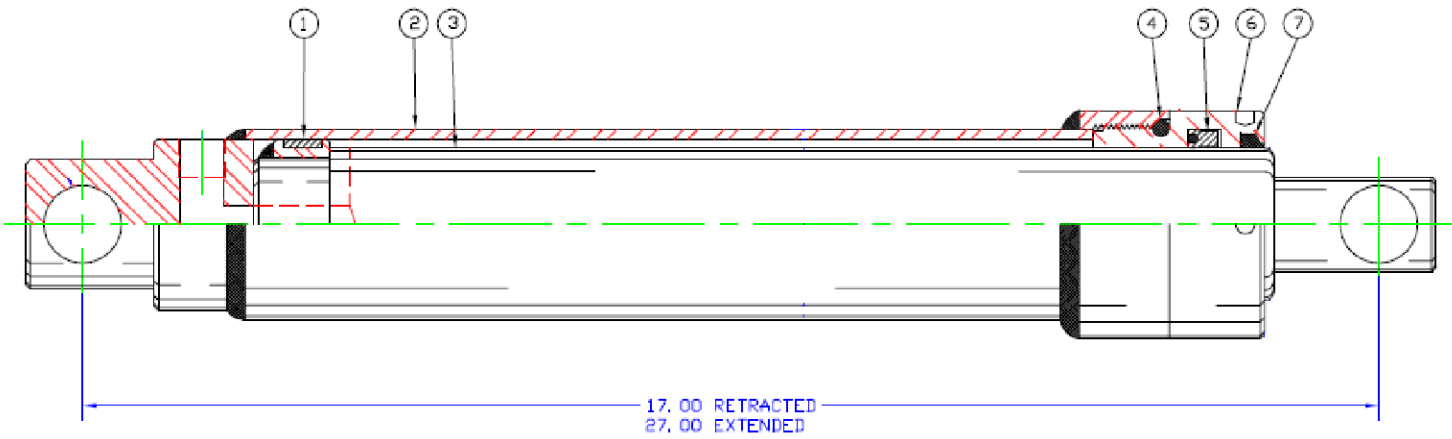
ITEM NO.	PART NUMBER	QTY.	DESCRIPTION
R 24	15O588	34	3/8-16 NYLOK NUT
25	15O309	16	3/8" AN WASHER
26	15L506	1	CYLINDER END SLEEVE
R 27	15O1238	1	1/2-13 x 3" LG. HHCS ZINC
28	15L24837	1	CYLINDER MOUNT SLEEVE
R 29	15O135	1	1/2-13 x 4-1/2" LG. HHCS ZINC
30	15W6157	1	LOWER LADDER WELD
31	15W6153	1	UPPER LADDER WELD
R 32	15O1261	18	3/8-16 x 2-1/2" LG. HHCS ZINC
33	15O5841	4	THREADED CONNECTOR
34	15O1152	2	SNAP
35	15L24858	2	SAFETY CHAIN
36	15F3061	2	SAFETY PIN
37	15O5836	34	1/4" x 1" SELF-DRILLING
38	15O3235	4	CORNER BUMPER
39	15O204	32	1/4" WASHER
40	15O2080	1	3/8 STREET ELBOW
41	15O246	14	3/8" WASHER
42	15O6283	1	MODIFIED CHECK VALVE
43	15O2110	1	FITTING, 3/8NPT x 3/8 SWIVEL 90
R 44	15L26021	4	PIVOT SHAFT
R 45	15O2119	4	3/8-24 x 3/4" LG. C.S. NYLON PATCH
R 46	15O6472	4	3/8-24 x 3/4" LG. BUTTON HEAD C.S.
R 47	15F1027	1	HYDRAULIC HOSE ASSEMBLY

***15O6716 SEAL KIT FOR 15O6109 FOOT PUMP**



ILLUSTRATED PARTS CATALOG

15O5590 ASSEMBLY



**SEAL KIT PART #
15O5598**

ITEM NO.	PART NUMBER	QTY.	DESCRIPTION
1	15O5599	1	WEAR RING
2	15O5600	1	JACKET ASSEMBLY
3	15O5601	1	PISTON ROD ASSEMBLY
4	15O5602	1	'O' RING
5	15O5603	1	POLYPAK (TYPE 'B')
6	15O5604	1	GLAND NUT
7	15O5605	1	ROD WIPER