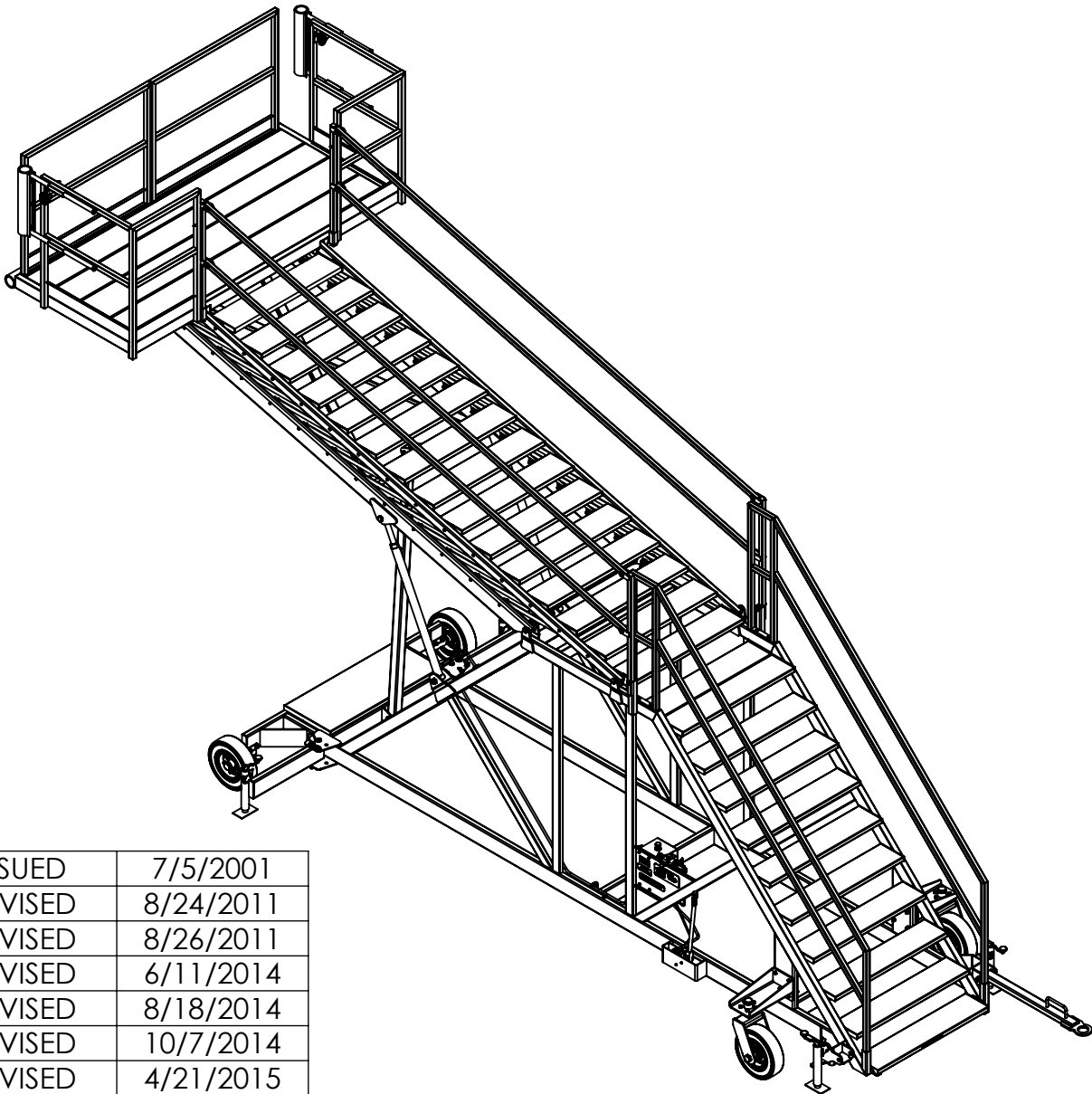


CLYDE

15F2698 OWNER'S MANUAL



ISSUED	7/5/2001
REVISED	8/24/2011
REVISED	8/26/2011
REVISED	6/11/2014
REVISED	8/18/2014
REVISED	10/7/2014
REVISED	4/21/2015
REVISED	6/11/2015
REVISED	5/10/2019

10' - 19' MAINTENANCE STAND



CLYDE MACHINES INC.
P.O. BOX 194
GLENWOOD, MN 56334
TEL. (320) 634-4504
FAX. (320) 634 4506

WARRANTY

Clyde Machines Inc. warrants all goods of its manufacture to be free from defects caused by faulty material or poor workmanship and will at its option repair or replace, without charge, or allow credit for any such goods found on examination by Seller to be defective under normal use and service within one year from date of shipment to the Buyer, provided Seller is promptly notified in writing upon discovery of such defects. Goods shall not be returned to Seller or modified at Seller's expense without Seller's consent in writing. This warranty does not cover damage caused by improper use, installation, overloading, accident, neglect or harmful alterations or repairs made by others, weather conditions and acts of God. The Buyer's remedies with respect to defective good shall be exclusively limited as above provided and in no event shall the Seller be liable for consequential damage. Components purchased by the Seller are subject to the warranty policy of the original equipment manufacturer, and Seller will assist the Buyer in resolving any warranty claims if such action is required.



INTRODUCTION:

This manual contains instructions for operating and maintaining Model 15F2698 Maintenance Stand manufactured by Clyde Machines, Inc. Glenwood, Minnesota. Illustrated breakdowns of all parts used in the maintenance stand are included for identification of parts and parts ordering information.

PREPARATION FOR USE:

The maintenance stand has been lubricated and adjusted at the factory and no additional preparation is required. A general inspection should be made to determine if any damage was sustained in transit. If any damage was sustained the transportation company should be notified immediately.

OPERATING INSTRUCTIONS:

A. Raising the Maintenance Stand

1. Close the needle valve.
2. Operate either hydraulic pump until platform is at desired working height. Place pin in upper tube of the safety strut and open needle valve until the pin rests on the lower tube of the safety strut. Close the needle valve.
3. Move stand to desired position and lower stabilizer jacks.

B. Lowering the Maintenance Stand

1. Raise the stabilizer jacks.
2. Pull the stand away from the working position.
3. Raise stand slightly to remove pin from the safety strut. Open needle valve to lower the stand.

Caution: Always lower the stabilizer jacks after positioning stand. Always insert the safety pin thru the safety strut after raising the platform.



MAINTENANCE:

1. Every 6 months grease the major pivots on the maintenance stand, grease zerks are provided.
2. Annually the wheels should be removed and the hub bearings repacked with grease.
3. Every 90 days apply a few drops of oil to pivot points to keep parts from binding.
4. Annually check hydraulic oil level – should be no greater than 1-1/2” down from top hydraulic tank with stand in lowest position. If necessary to add oil, use Mobil DTE-11 or equivalent.
 - Capacity 2.5 gallons
5. Annually replace hydraulic filter cartridge. Replacement cartridge part number 1503050

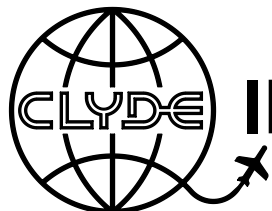
BOLT TORQUE CHART:

Torque Values of Grade 5 Fine Thread (SAE) Fasteners
All Torque Specified in LB.-FT

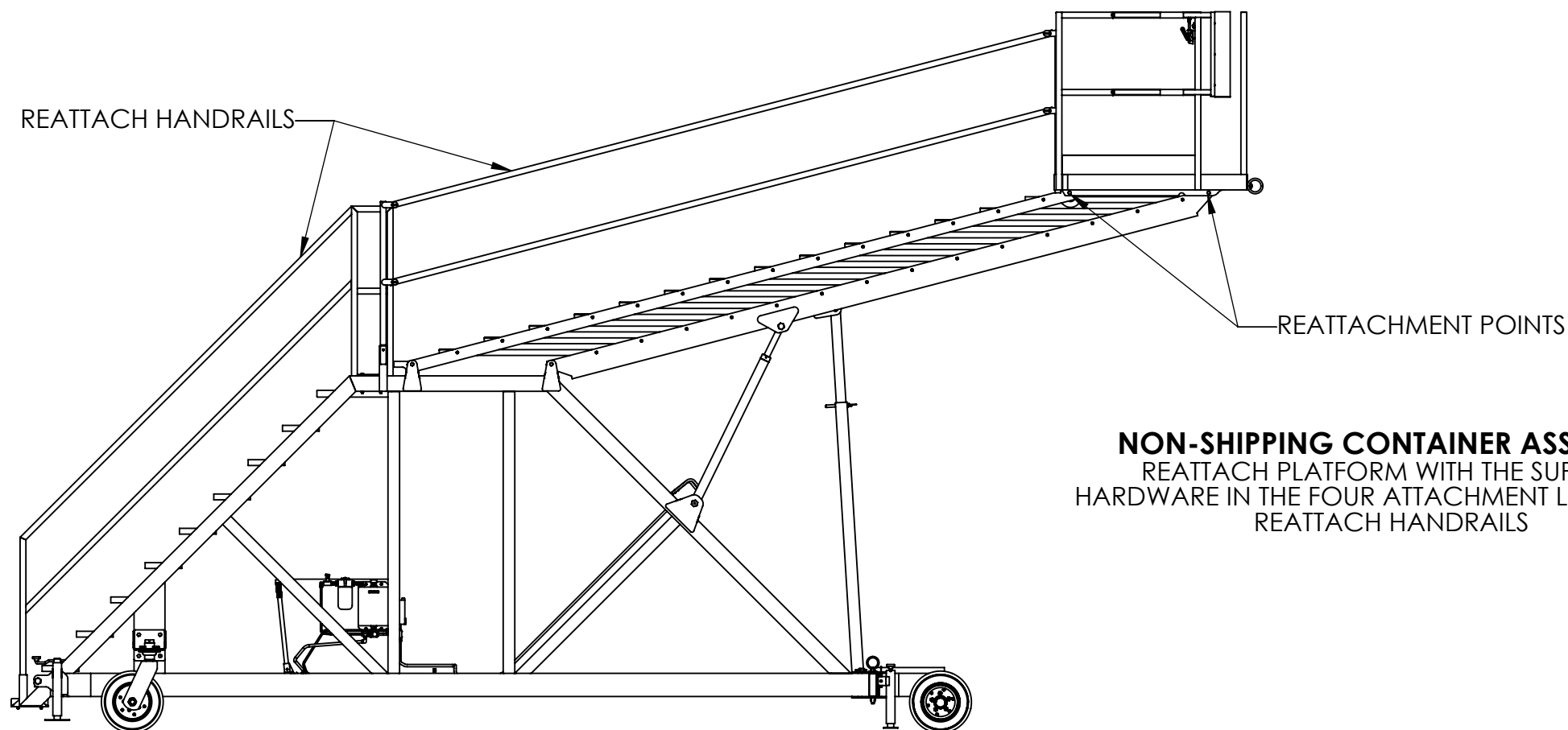
Dia.	1/4-28	5/16-24	3/8-24	7/16-20	1/2-20	5/8-18	3/4-16	7/8-14	1-12
Install Torque	9	20	35	55	90	90	90	90	90

LOAD TESTING:

It is recommended that the maintenance stand be load tested every 5 years or after a significant damage event and subsequent repairs. With the platform adjusted to the lowest position, a load twice the rated load should be placed on the center of the platform and the entire stand be observed for any material or weld failures. The load should be tethered in such a way that in the event of a failure of the stand, the load will not fall more than several inches.



DUE TO SHIPPING HEIGHT RESTRICTIONS 15F2698 MAINTANCE STAND REQUIRES SOME ASSEMBLY

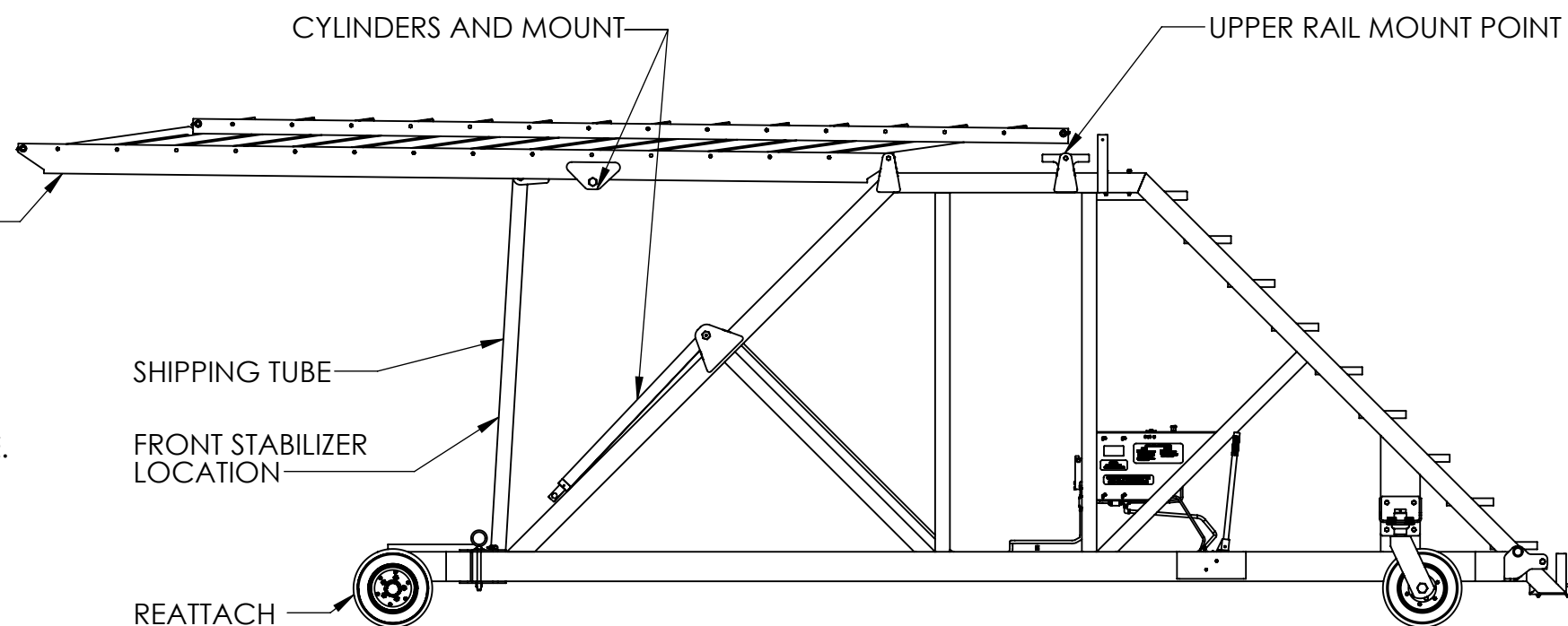


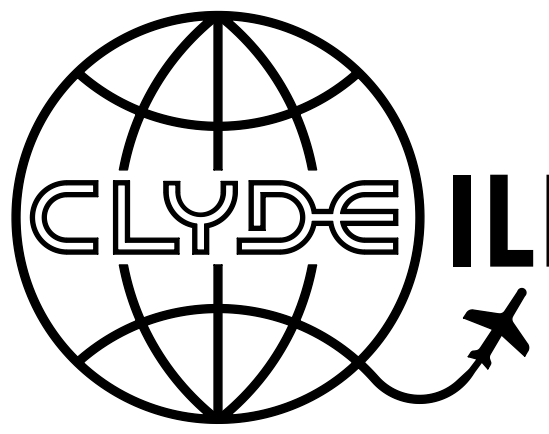
NON-SHIPING CONTAINER ASSEMBLY
 REATTACH PLATFORM WITH THE SUPPLIED
 HARDWARE IN THE FOUR ATTACHMENT LOCATIONS.
 REATTACH HANDRAILS

SHIPPING CONTAINER ASSEMBLY

1. REATTACH THE FRONT TIRE AND AXLE ASSEMBLIES.
2. SUPPORT THE FRONT OF THE LIFT RAILS AND REMOVE THE SHIPPING TUBE.
3. USING THE HYDRAULICS SLOWLY CONTINUE TO RAISE THE LIFT RAILS UNTIL THE UPPER RAIL CAN BE REATTACHED.
4. REATTACH THE FRONT STABILIZER TUBES INPLACE OF THE REMOVED SHIPPING TUBE.
5. SLOWLY LIFT THE FRONT OF THE LIFT RAILS UNTIL THE CYLINDERS CAN BE REATTACHED TO THE LIFT RAILS.
6. REATTACH PLATFORM/ HANDRAILS AS SHOWN IN THE NON-SHIPING CONTAINER ASSEMBLY.

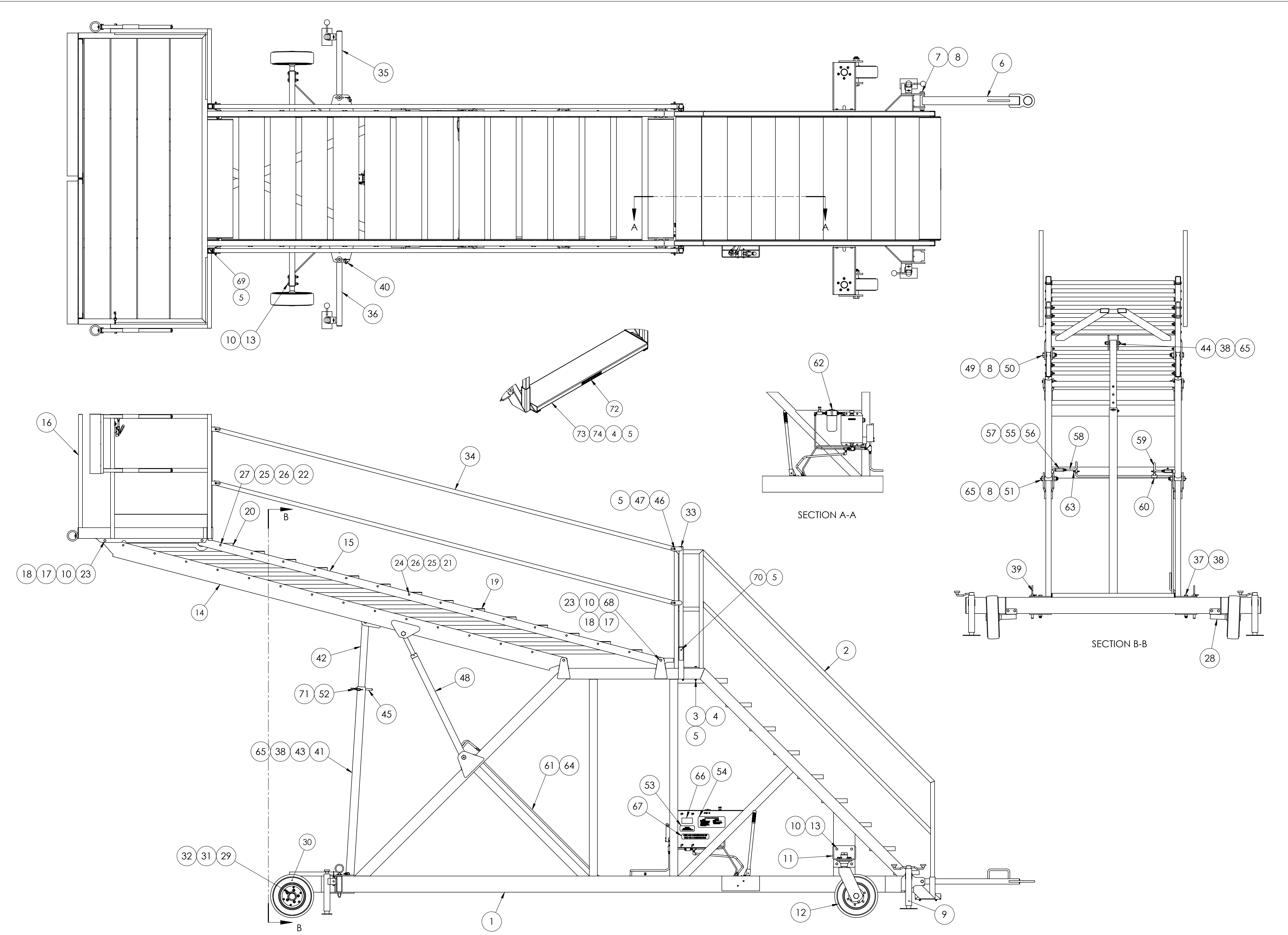
SUPPORT AND LIFT HERE





ILLUSTRATED PARTS CATALOG

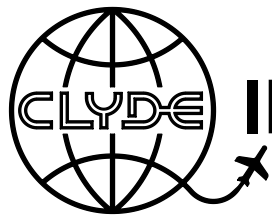
15F2698 ASSEMBLY



OPTIONAL

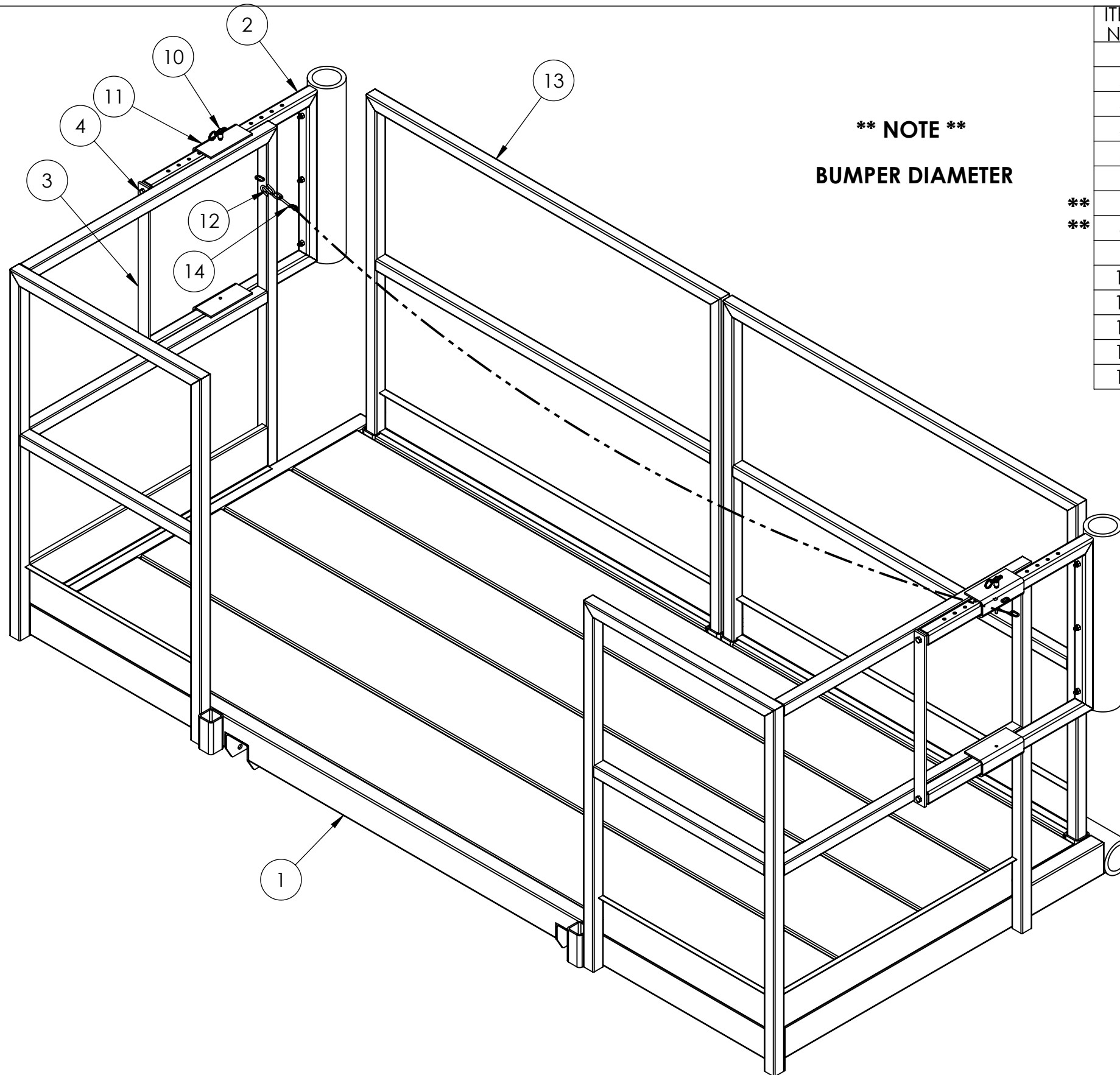
ITEM NO.	PART NUMBER	QTY.	DESCRIPTION
A	15W5212	2	CASTER MOUNT
B	15O5049	2	CASTER
C	15O3756	2	TIRE ASSEMBLY
D	15W3839	1	TOWBAR WELD (WITH SKEG)

ITEM NO.	PART NUMBER	Default/ QTY.	DESCRIPTION
1	15W5210	1	BASE FRAME WELD
2	15W5213	2	LOWER HANDRAIL WELD
3	15O1375	4	5/16-24 x 5" LG. C.S.
4	15O251	12	5/16" WASHER
5	15O315	20	5/16-24 NYLOK NUT
R 6	15W6429	1	TOWBAR WELDMENT
7	15O3063	1	1-14 x 6-1/2 LG. C.S.
8	15O597	5	1-14 NYLOK NUT
9	15O5873	4	JACK
10	15O586	30	1/2-20 NYLOK NUT
11	15W5211	2	CASTER MOUNT
12	15F2700	2	CASTER ASSEMBLY
13	15O1344	12	1/2-20 x 3-1/2 LG. C.S.
14	15W5216	1	LOWER LIFT RAIL
15	15W5217	2	LIFT RAIL
R 16	15F2948	1	4' x 9' PLATFORM ASSEMBLY
17	15L14428	8	LIFT RAIL SPACER
18	15O5866	8	GREASE ZERK 45 deg
R 19	15W5219	13	STEP WELD
20	15W5504	1	STEP WELD
R 21	15L21060	52	BUSHING
22	15L22068	4	STEP SPACER
23	15O323	4	1/2-20 x 4-1/2 LG. C.S.
R 24	15O753	52	3/8-24 x 3-1/4 LG. C.S.
25	15O246	56	3/8" WASHER
R 26	15O308	56	3/8-24 NYLOK NUT
27	15O150	4	3/8-24 x 4 LG. C.S.
28	15W5209	2	AXLE WELD
29	15O4668	2	CAST HUB
30	15F1892	2	TIRE & WHEEL ASSEMBLY
31	15O4399	2	1-14 UNF SLOTTED NUT
32	15O2258	2	1/8" x 2" LG. COITER KEY
33	15W5215	4	TOP POST
34	15L21054	4	HANDRAIL TUBE
35	15W5365	1	STABILIZER TUBE WELD R.H.
36	15W5430	1	STABILIZER TUBE WELD L.H.
37	15O5526	2	3/4-16 x 8" LG. C.S.
38	15O320	4	3/4-16 NYLOK NUT
39	15W5366	2	OUTRIGGER PIN
40	15O4006	2	S HOOK
41	15W5120	1	LOWER STRUT
42	15W5505	1	UPPER TUBE WELD
43	15L22064	1	MODIFIED BOLT
44	15L22065	1	MODIFIED BOLT
45	15O4459	1	BALL PIN
46	15O736	8	5/16-24 x 2-3/4 LG.
47	15O316	16	5/16" AN WASHER
48	15O5469	2	CYLINDER
49	15L23163	4	SPACER, CYLINDER SHAFT
50	15O4455	2	1-14 x 4-1/2" LG. C.S.
51	15L22066	2	CYLINDER PIN
52	15L16640	1	CHAIN
53	15L16864	1	WARNING PLACARD
54	15L22083	1	PLACARD
55	15O2418	2	5406-08-06 BUSHING
56	15O5937	2	CHECK VALVE
57	15O680	2	1404-06-04 FITTING
58	15F987	1	HOSE ASSEMBLY
59	15F1937	1	HOSE ASSEMBLY
60	15O1117	1	1/4 TEE
61	15F2631	1	HOSE ASSEMBLY
62	15F2697	1	HYDRAULIC ASSEMBLY
63	15O2587	2	1/2" RIDGID CLAMP
64	15O1419	2	VINYL CLAMP
65	15O5865	4	ZERK, GREASE
66	15O5895	1	PLACARD, WEIGHTS
67	15O5830	1	WARNING PLACARD
68	15O1453	4	1/2-20 x 5" LG. C.S.
69	15O633	2	5/16-24 x 4" LG. C.S.
70	15O1282	2	5/16-24 x 2-1/2" LG. C.S.
R 71	15O5841	1	THREADED CONNECTOR
R 72	15O6485	1	PLACARD, WARNING
R 73	15W6514	1	STEP WELD
R 74	15O191	4	5/16-24 x 1" LG. C.S.



ILLUSTRATED PARTS CATALOG

15F2684 ASSEMBLY



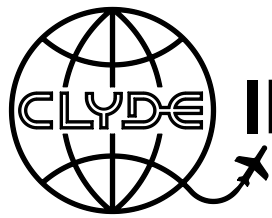
**** NOTE ****
BUMPER DIAMETER

ITEM NO.	PART NUMBER	QTY.	DESCRIPTION	
1	15W5472	1	PLATFORM WELD	
2	15W5139	2	HANDRAIL EXTENSION	
3	15L20749	2	END CAP FLAT	
4	15O2119	4	3/8-24 x 3/4" LG. C.S. NYLON PATCH	
5	15L19565	2	BUMPER	
6	15W4886	2	BUMPER STRIP WELD	
**	7	15L24103	2	BUMPER, FRONT
**	8	15W5987	2	BUMPER STRIP
9	15O315	16	5/16-24 NYLOK NUT	
10	15O4705	2	BALL LOCK PIN	
11	15O5325	2	S HOOK	
12	15O4006	1	S HOOK	
13	15W5474	2	HANDRAIL, FRONT	
14	15O1152	1	SNAP	

**** 15L24103 4" O.D. BUMPER**
15L21938 7" O.D. BUMPER - OBSOLETE

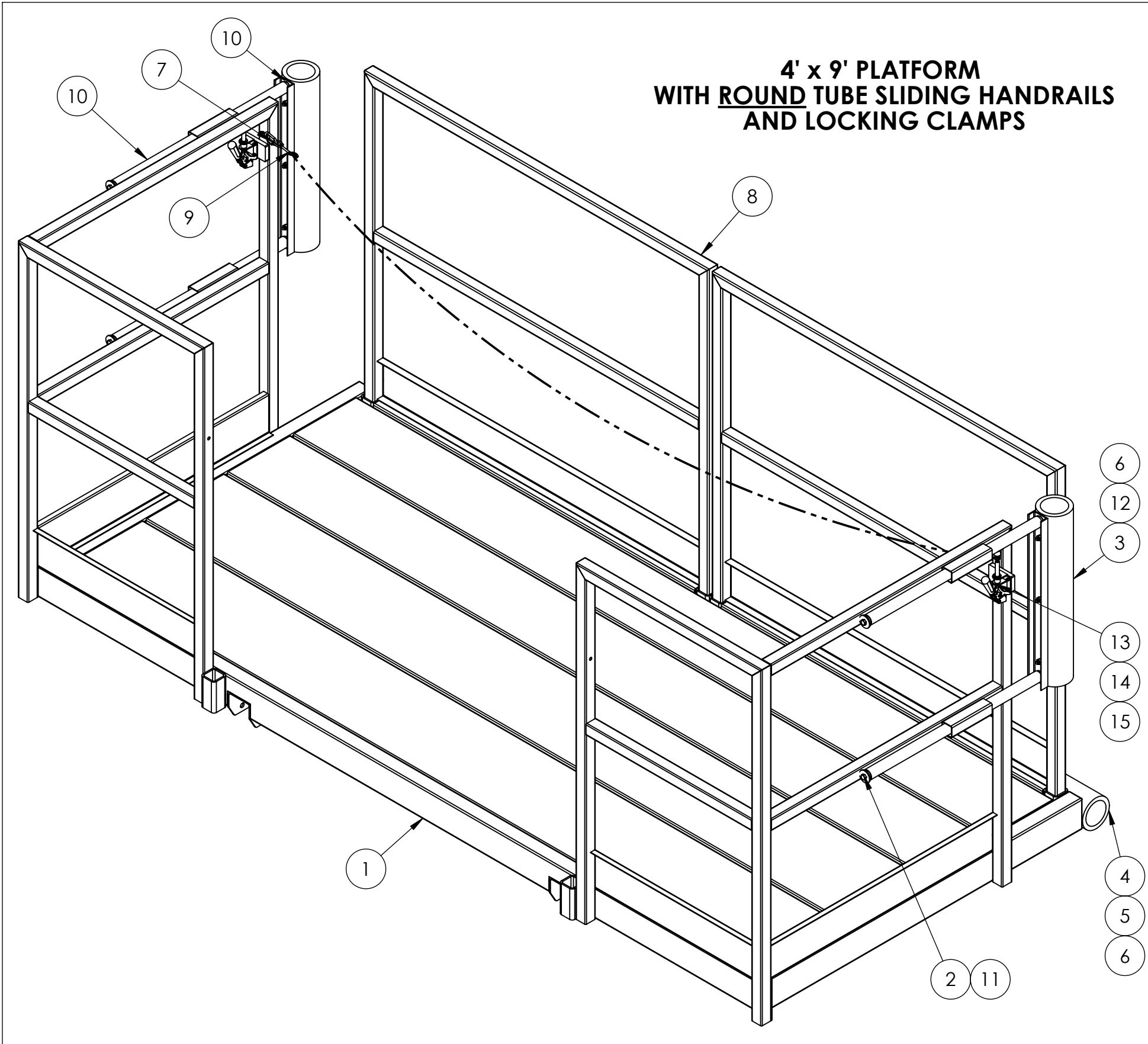
**** 15W5987 BUMPER STRIP FOR 4" O.D. BUMPER**
15W5473 BUMPER STRIP FOR 7" O.D. BUMPER - OBSOLETE

4' x 9' PLATFORM
WITH SQUARE TUBE SLIDING HANDRAILS
AND PIN POSITIONERS



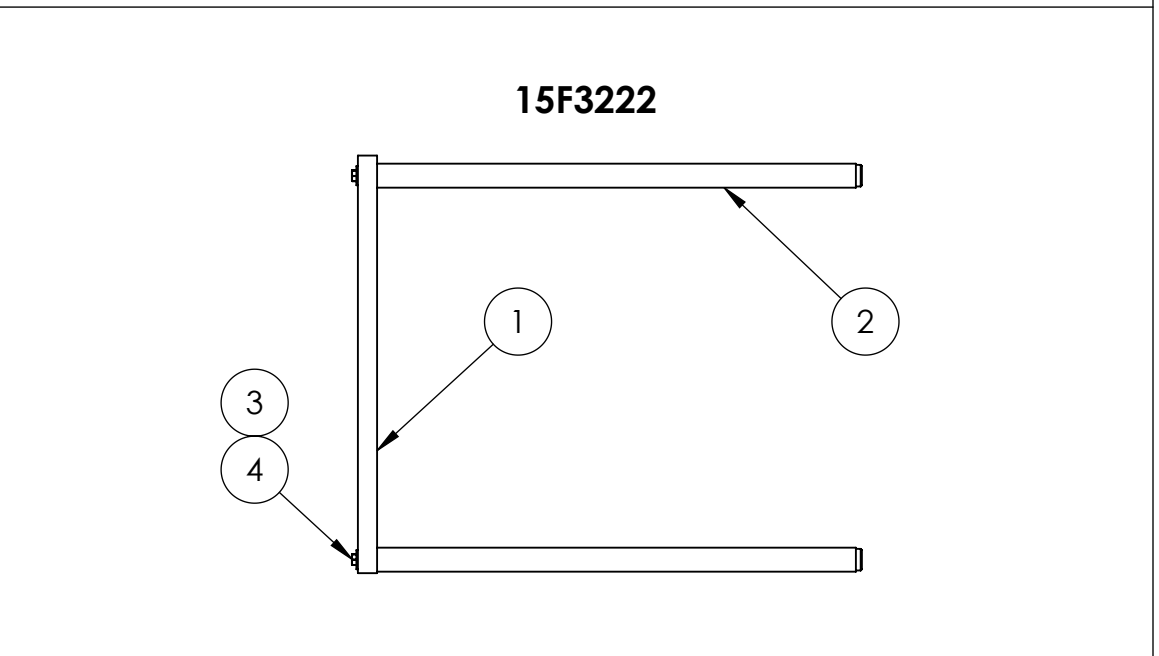
ILLUSTRATED PARTS CATALOG

15F2948 ASSEMBLY

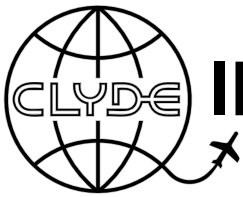


**4' x 9' PLATFORM
WITH ROUND TUBE SLIDING HANDRAILS
AND LOCKING CLAMPS**

ITEM NO.	PART NUMBER	QTY.	DESCRIPTION
1	15W5991	1	PLATFORM WELD
2	15O2119	4	3/8-24 x 3/4" LG. C.S. NYLON PATCH
3	15L19565	2	BUMPER
4	15L24103	2	BUMPER, FRONT
5	15W5987	2	BUMPER STRIP
6	15O315	16	5/16-24 NYLOK NUT
7	15O5841	1	THREADED CONNECTOR
8	15W5474	2	HANDRAIL, FRONT
9	15O1152	1	SNAP
R 10	15F3222	2	SLIDING HANDRAIL ASSY
11	15L23888	4	SLIDING HANDRAIL STOP
12	15W5676	2	BUMPER STRIP WELD
13	15O5966	2	TOGGLE CLAMP
14	15O5967	2	CLAMP SPINDLE
15	15O1940	8	10-32 x 1/2" SCHC ZP

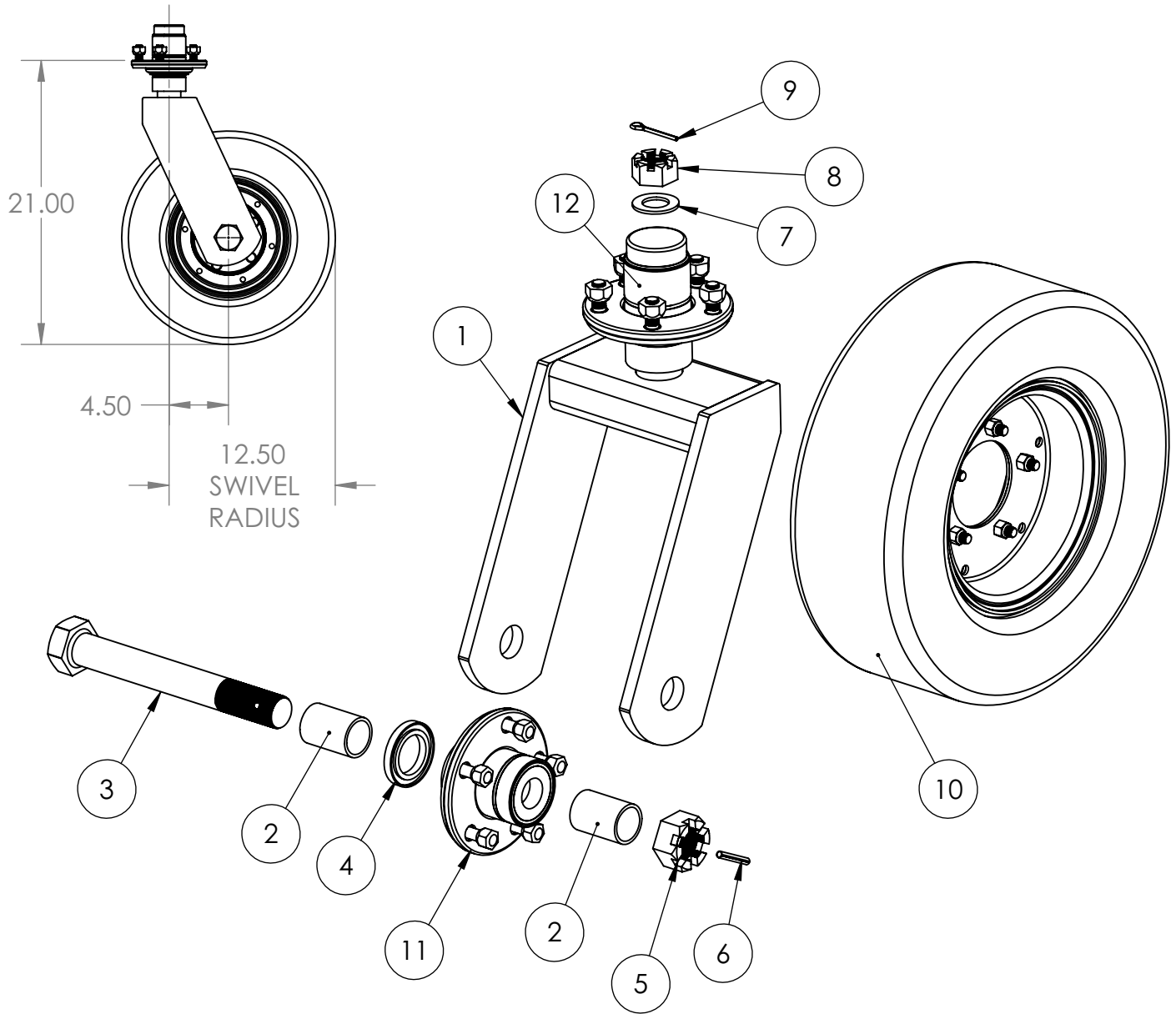


ITEM NO.	PART NUMBER	QTY.	DESCRIPTION
1	15L23886	1	CHANNEL, SLIDING HANDRAIL
2	15W6418	2	TUBE, HANDRAIL
3	15O246	2	3/8" WASHER
4	15O2119	2	3/8-24 x 3/4" LG. C.S. NYLON PATCH

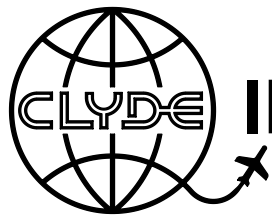


ILLUSTRATED PARTS CATALOG

15F2700 ASSEMBLY

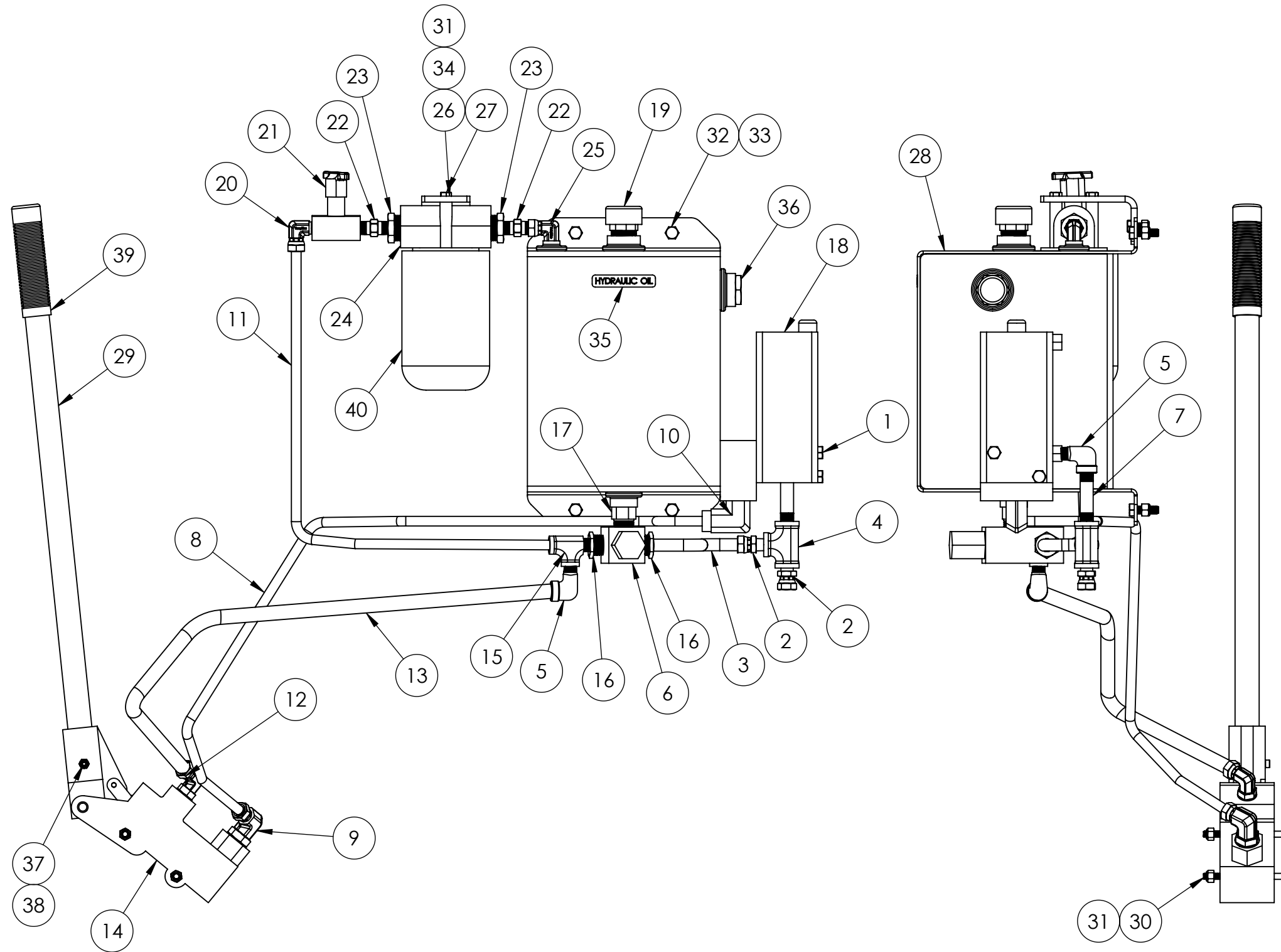


ITEM NO.	PART NUMBER	QTY.	DESCRIPTION
1	15W5508	1	CASTER FRAME WELD
2	15L22082	2	SPACER
3	15L22081	1	AXLE BOLT
4	15O5272	1	SEAL
5	15O5055	1	1 1/4-12 SLOTTED NUT
6	15O318	1	1/4 X 1 3/4 LG. ROLL PIN
7	15O4722	1	1" AN WASHER
8	15O4399	1	1-14 UNF SLOTTED NUT
9	15O2258	1	1/8" x 2" LG. COTTER KEY
10	15F1892	1	TIRE & WHEEL ASSEMBLY
11	15O4492	1	5 BOLT HUB
12	15O4668	1	CAST HUB



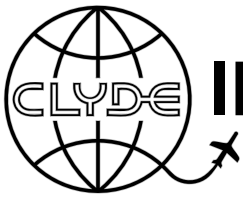
ILLUSTRATED PARTS CATALOG

15F2697 ASSEMBLY



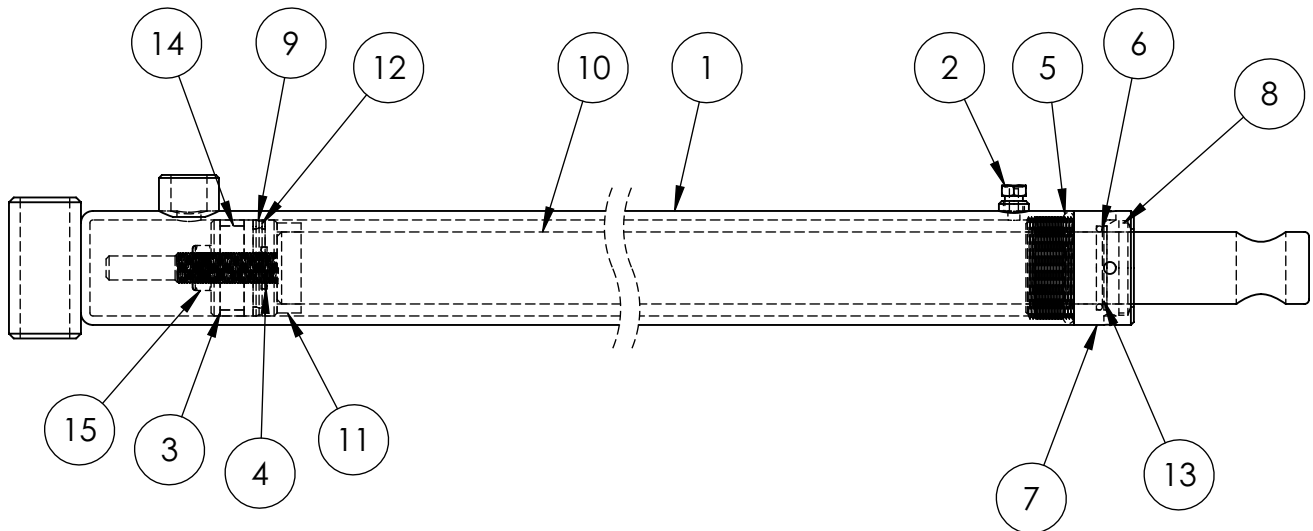
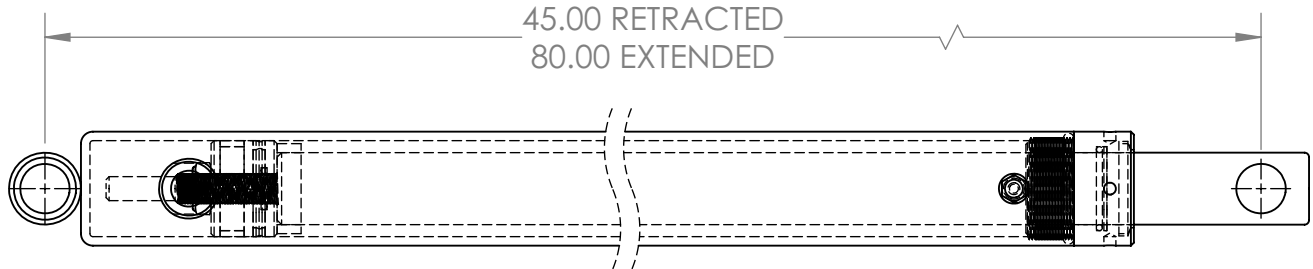
**HASKEL PUMP SEAL KIT
PART # 15O5907**

ITEM NO.	PART NUMBER	QTY.	DESCRIPTION
1	15O1357	2	5/16-24 x 3-1/2" LG. C.S.
2	15O2199	2	1404-04-04 FITTING
3	15F1914	1	HOSE ASSEMBLY
4	15O1117	1	5605-04-04-04 TEE
5	15O2117	2	1/4 NPT STREET ELBOW
6	15O5612	1	PRINCE VALVE
7	15O5614	1	1/4" x 2-1/2" LG. STRAIGHT NIPPLE
8	15F1034	1	HOSE ASSEMBLY
9	15O4468	1	SWIVEL, 6901-8-6
10	15O2080	1	3/8 STREET ELBOW
11	15F1942	1	HOSE ASSEMBLY
12	15O4467	1	FITTING, 9/16NF x 1/4 SWIVEL 90
13	15F918	1	HOSE ASSEMBLY
14	15O4446	1	DUAL ACTING PUMP
15	15O3952	1	5602-04-04-04 STREET TEE
16	15O2350	2	1/2" TO 1/4" BUSHING
17	15O901	1	1/2" NPT HEX NIPPLE
18	15O5613	1	HASKEL PUMP
R 19	15O6285	1	BREATHER CAP, 3/4 NPT
20	15O1110	1	1501-04-04 FITTING
21	15O2995	1	1/4 NEEDLE VALVE
22	15O1108	2	1/4 HEX NIPPLE
23	15O3877	2	3/4 TO 1/4 BUSHING
24	15O2749	1	FILTER ELEMENT MOUNT
25	15W5507	1	RETURN FITTING WELD
26	15L21946	1	OIL FILTER BRACKET
27	15O2552	2	1/4-20 x 3/4" LG. C.S.
28	15W5506	1	OIL RESERVOIR
29	15L6779	1	PUMP HANDLE
30	15O3604	2	1/4-28 x 3-1/4" LG. C.S.
31	15O298	4	1/4-28 NYLOK NUT
32	15O191	4	5/16-24 x 1" LG. C.S.
33	15O315	4	5/16-24 NYLOK NUT
34	15O304	2	1/4-28 x 3/4" LG. C.S.
35	15L13490	1	PLACARD, HYDRAULIC OIL
R 36	15O5939	1	3/4 N.P.T. SIGHT PLUG
R 37	15O6498	1	#10-32 x 1-3/4" LG. SOCKET HEAD C.S.
R 38	15O6499	1	#10-32 NYLOK JAM NUT
R 39	15O1070	1	HANDLE GRIP
40	15O3050	1	FILTER ELEMENT



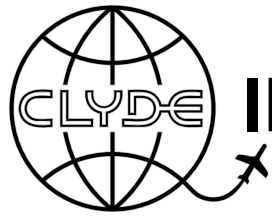
ILLUSTRATED PARTS CATALOG

15O5469 ASSEMBLY



SEAL KIT 15O5652

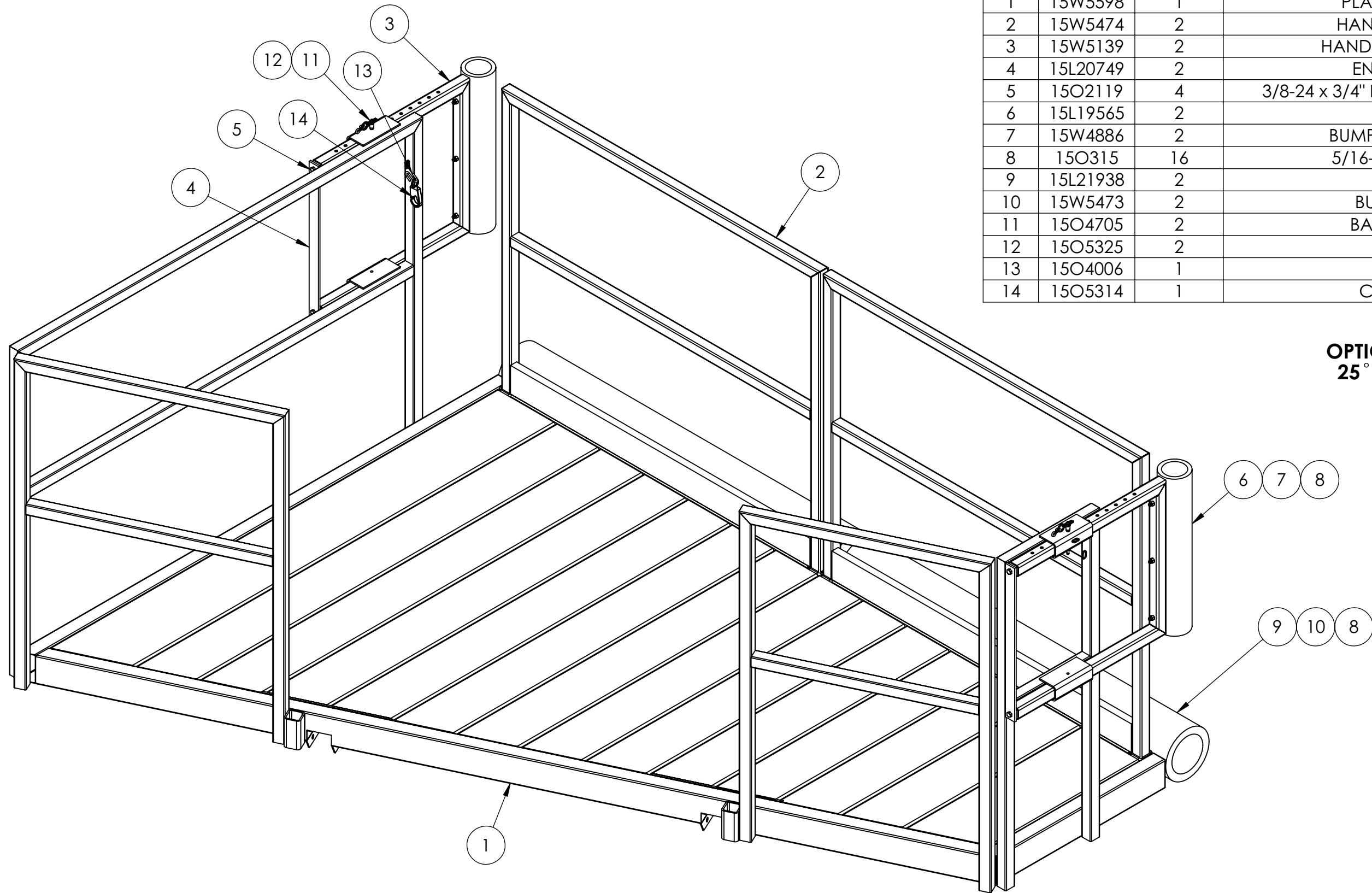
ITEM NO.	PART NUMBER	QTY.	DESCRIPTION
1	15O5703	1	JACKET ASSEMBLY
2	15O5705	1	1/8 NPT BREATHER
3	15O5346	1	PISTON (STEEL)
4	15O5349	1	O' RING
5	15O5706	1	O' RING
6	15O5707	1	O' RING
7	15O5709	1	GLAND NUT
8	15O5356	1	ROD WIPER
9	15O5347	1	POLYPAK
10	15O5704	1	PISTON ROD
11	15O5702	1	STOP TUBE
12	15O5348	1	TEFLON BACKUP
13	15O5708	1	BACKUP WASHER
14	15O5345	1	WEAR RING
15	15O5344	1	LOCK NUT



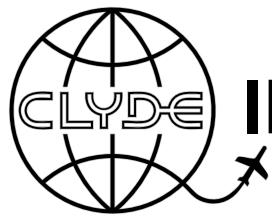
ILLUSTRATED PARTS CATALOG

15F2780 ASSEMBLY

ITEM NO.	PART NUMBER	QTY.	DESCRIPTION
1	15W5598	1	PLATFORM WELD
2	15W5474	2	HANDRAIL, FRONT
3	15W5139	2	HANDRAIL EXTENSION
4	15L20749	2	END CAP FLAT
5	15O2119	4	3/8-24 x 3/4" LG. C.S. NYLON PATCH
6	15L19565	2	BUMPER
7	15W4886	2	BUMPER STRIP WELD
8	15O315	16	5/16-24 NYLOK NUT
9	15L21938	2	BUMPER
10	15W5473	2	BUMPER STRIP
11	15O4705	2	BALL LOCK PIN
12	15O5325	2	S HOOK
13	15O4006	1	S HOOK
14	15O5314	1	CHAIN SNAP

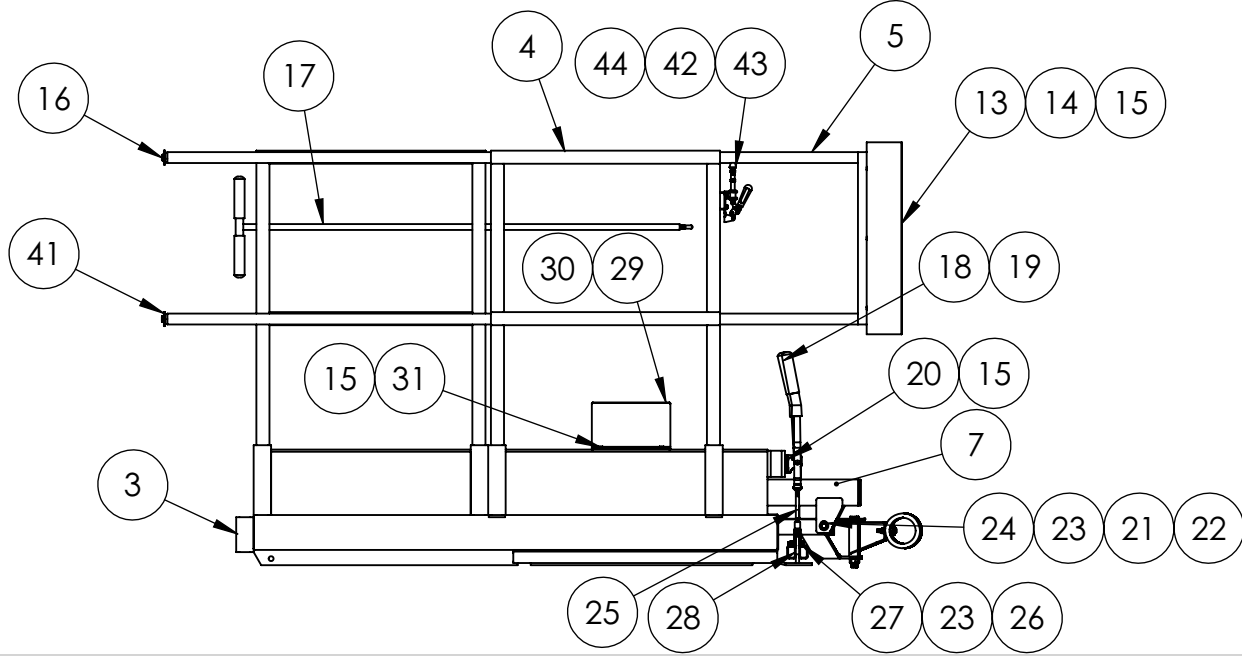
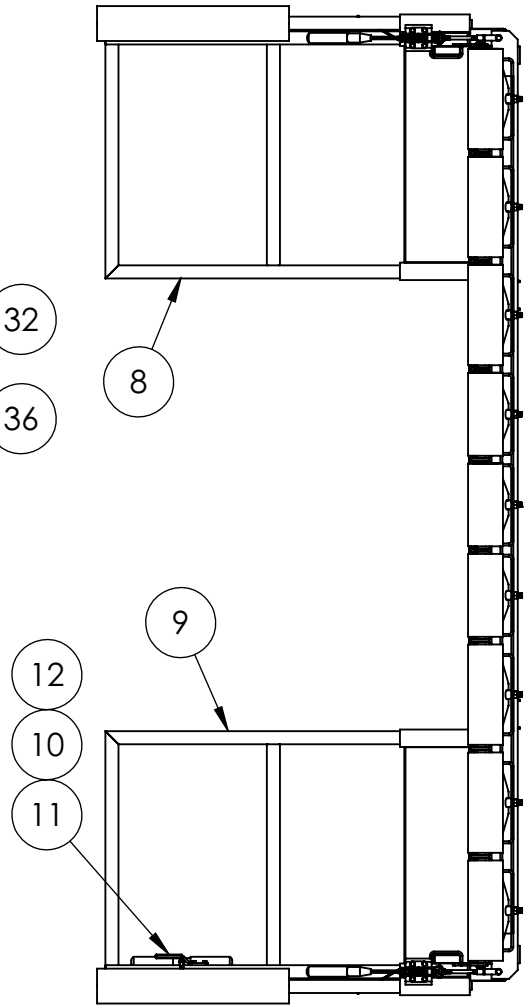
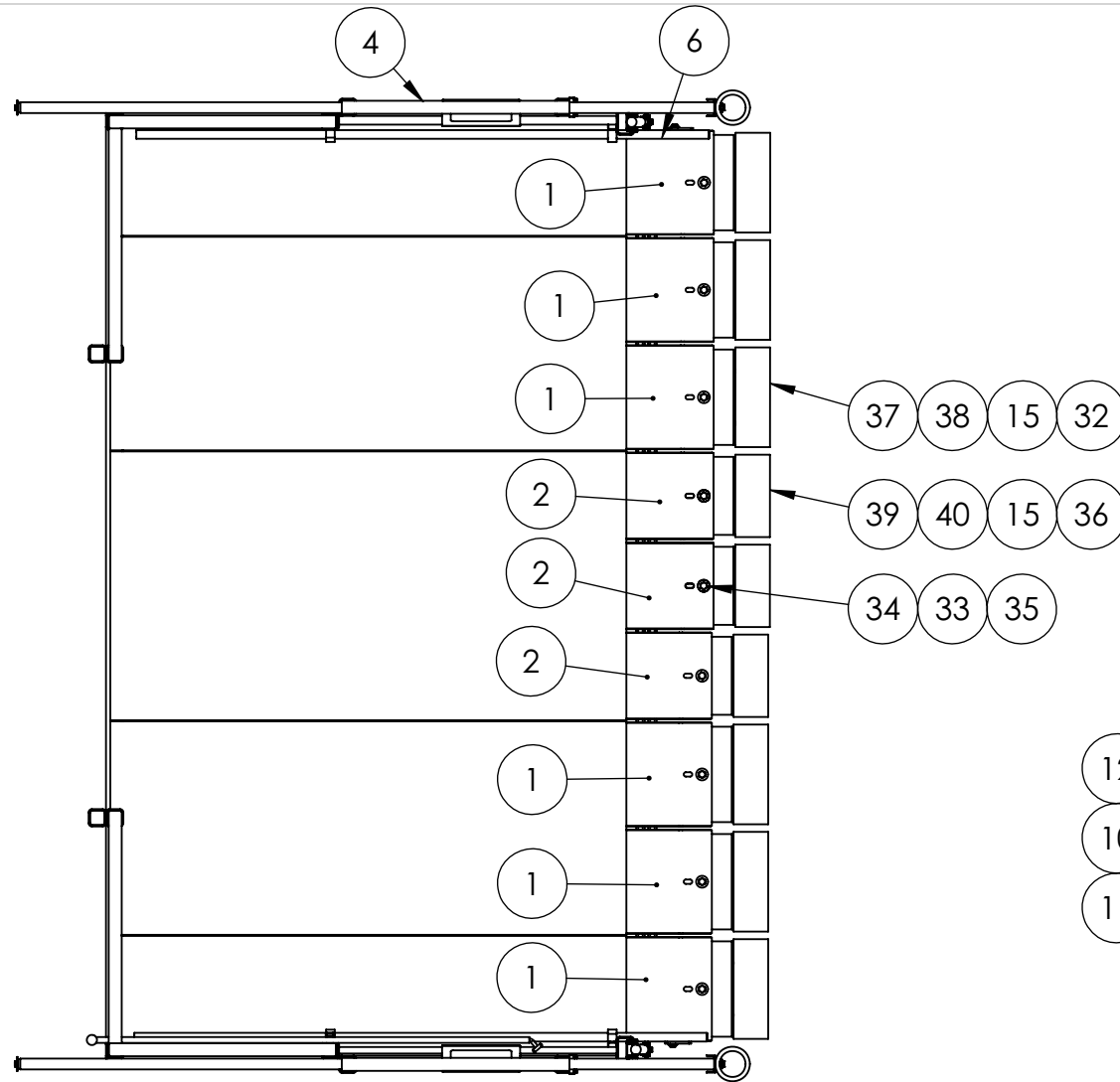


**OPTIONAL PLATFORM
25° LEADING EDGE**



ILLUSTRATED PARTS CATALOG

15F2912 ASSEMBLY

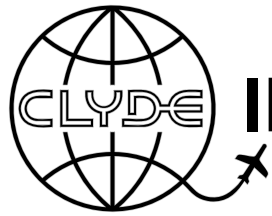


**OPTIONAL EXTENSIBLE
PLANK PLATFORM**

CAUTION:
AFTER ADJUSTING PLANKS
BOTH CLAMPS (ITEM 18) MUST BE IN
THE UP/LOCKED POSITION BEFORE
STANDING ON ADJUSTABLE PLANKS

AFTER ADJUSTING HANDRAIL LENGTH
BOTH HANDRAIL CLAMPS (ITEM 42)
MUST BE IN THE UP/LOCKED POSITION

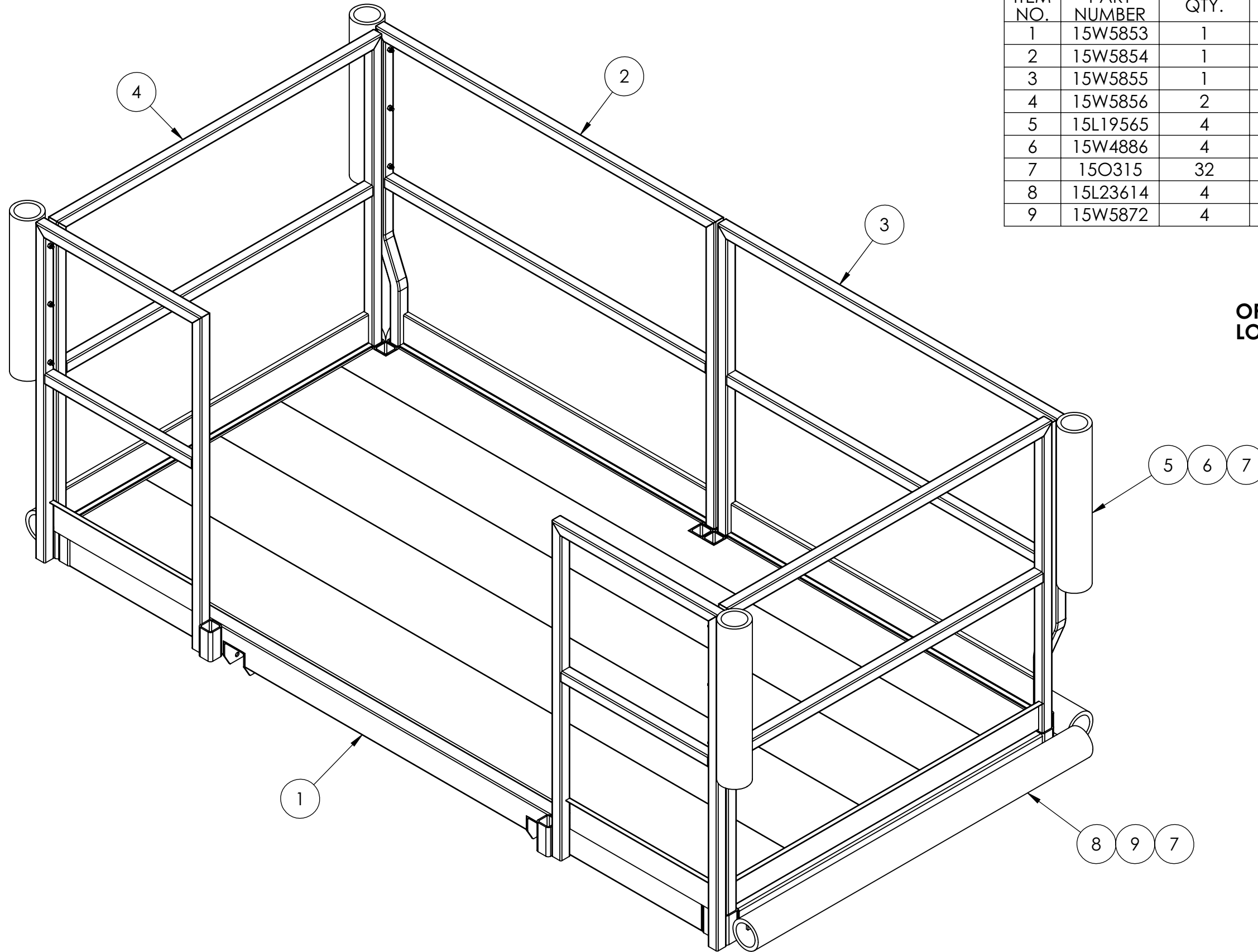
ITEM NO.	PART NUMBER	QTY.	DESCRIPTION
1	15W5871	6	STEP WELD (12 INCH)
2	15W5870	3	STEP WELD (10 INCH)
3	15W5864	1	PLATFORM WELD
4	15W5798	2	HANDRAIL WELD R.H.
5	15W5666	2	SLIDING HANDRAIL WELD
6	15W5799	1	TOE PLATE WELD L.H.
7	15W5800	1	TOE PLATE WELD R.H.
8	15W5865	1	HANDRAIL WELD L.H.
9	15W5866	1	HANDRAIL WELD R.H.
10	15L23150	2	BRACKET, STORAGE
11	15O5881	2	GRIP, VINYL
12	15O3323	4	1/4-20 x 3/4" LG. SELF TAPPING
13	15L19565	2	BUMPER
14	15W5676	2	BUMPER STRIP WELD
15	15O315	36	5/16-24 NYLOK NUT
16	15O2119	4	3/8-24 x 3/4" LG. C.S. NYLON PATCH
17	15F2897	1	ACTUATOR
18	15W5829	2	CLAMP WELD
19	15O5940	2	GRIP, HANDLE, RED
20	15O191	8	5/16-24 x 1" LG. C.S.
21	15L14429	2	STEP SPACER
22	15O246	2	3/8" WASHER
23	15O308	4	3/8-24 NYLOK NUT
24	15O306	2	3/8-24 x 2-3/4" LG. C.S.
25	15L23133	2	ROD, THREADED
26	15O4435	2	3/8-24 YOKE END
27	15O337	2	3/8-24 x 1-1/2" LG. C.S.
28	15W5869	1	CLAMP BAR WELD
29	15L23134	2	PLACARD PLATE
30	15O5927	2	DECAL, WARNING
31	15O627	4	5/16-24 x 3/4" LG. C.S.
32	15W5867	6	BUMPER BRACKET, 12"
33	15O586	9	1/2-20 NYLOK NUT
34	15O825	9	1/2-20 x 5-1/2" LG. C.S.
35	15L23610	9	SPANNER BUSHING
36	15W5868	3	BUMPER BRACKET WELD, 10"
37	15L22857	6	BUMPER, STEP (LONG)
38	15W5675	6	BUMPER STRIP WELD
39	15L23564	3	BUMPER, STEP (SHORT)
40	15W5857	3	BUMPER STRIP WELD
41	15O2993	4	3/8" FENDER WASHER
42	15O5966	2	TOGGLE CLAMP
43	15O5967	2	CLAMP SPINDLE
44	15O1940	8	#10-32 x 1/2" LG. S.H.C.S.



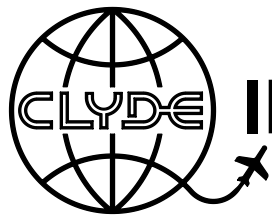
ILLUSTRATED PARTS CATALOG

15F2915 ASSEMBLY

ITEM NO.	PART NUMBER	QTY.	DESCRIPTION
1	15W5853	1	PLATFORM WELD
2	15W5854	1	REMOVABLE HANDRAIL WELD L.H.
3	15W5855	1	REMOVABLE HANDRAIL WELD R.H.
4	15W5856	2	REMOVABLE HANDRAIL WELD
5	15L19565	4	BUMPER
6	15W4886	4	BUMPER STRIP WELD
7	15O315	32	5/16-24 NYLOK NUT
8	15L23614	4	BUMPER
9	15W5872	4	BUMPER STRIP WELD



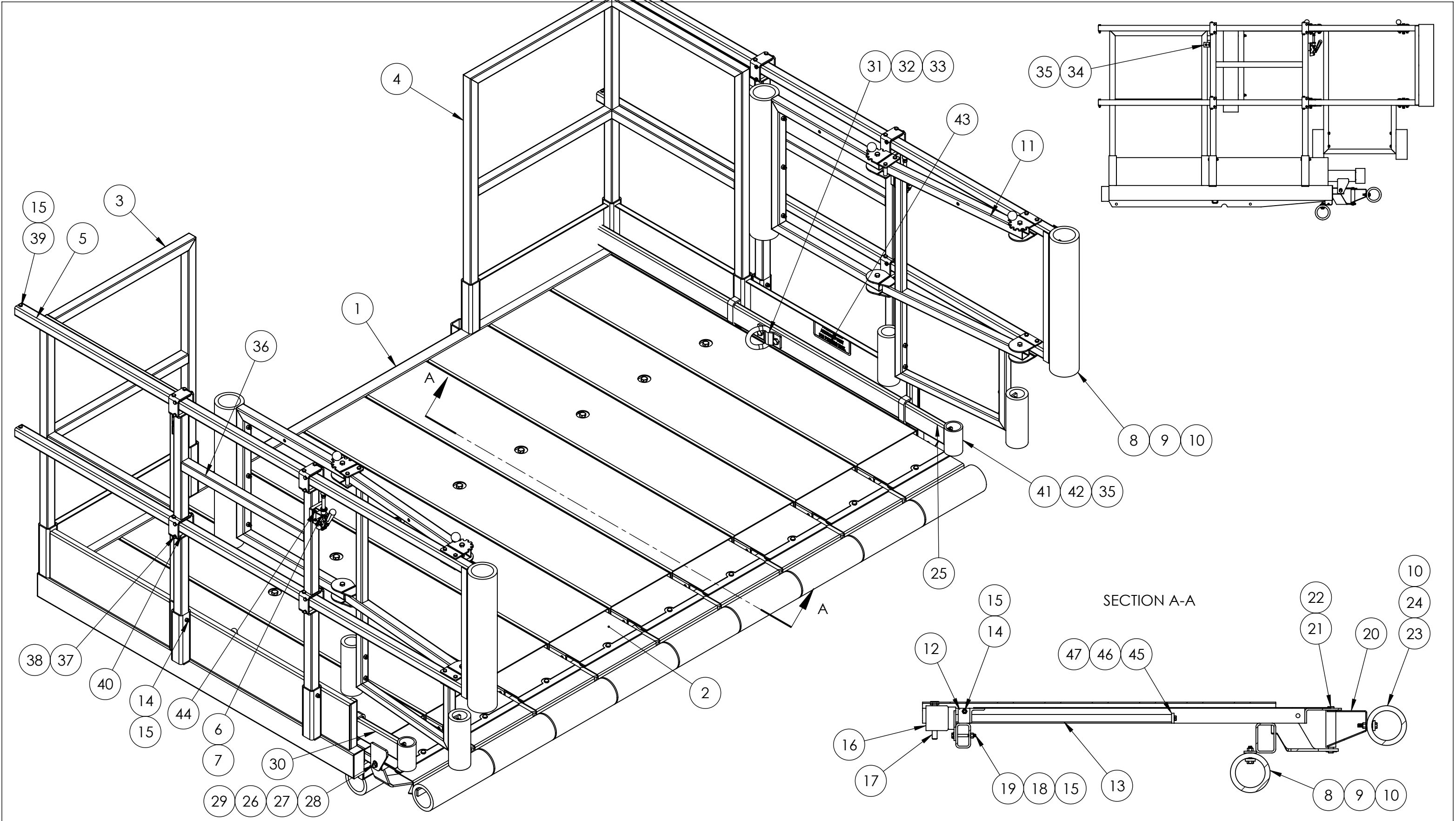
**OPTIONAL PARALLEL
LOADING PLATFORM**

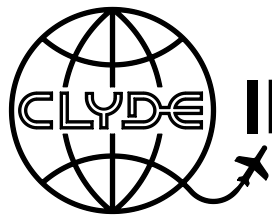


ILLUSTRATED PARTS CATALOG

OPTIONAL EXTENDABLE PLANK PLATFORM

15F3350 ASSEMBLY



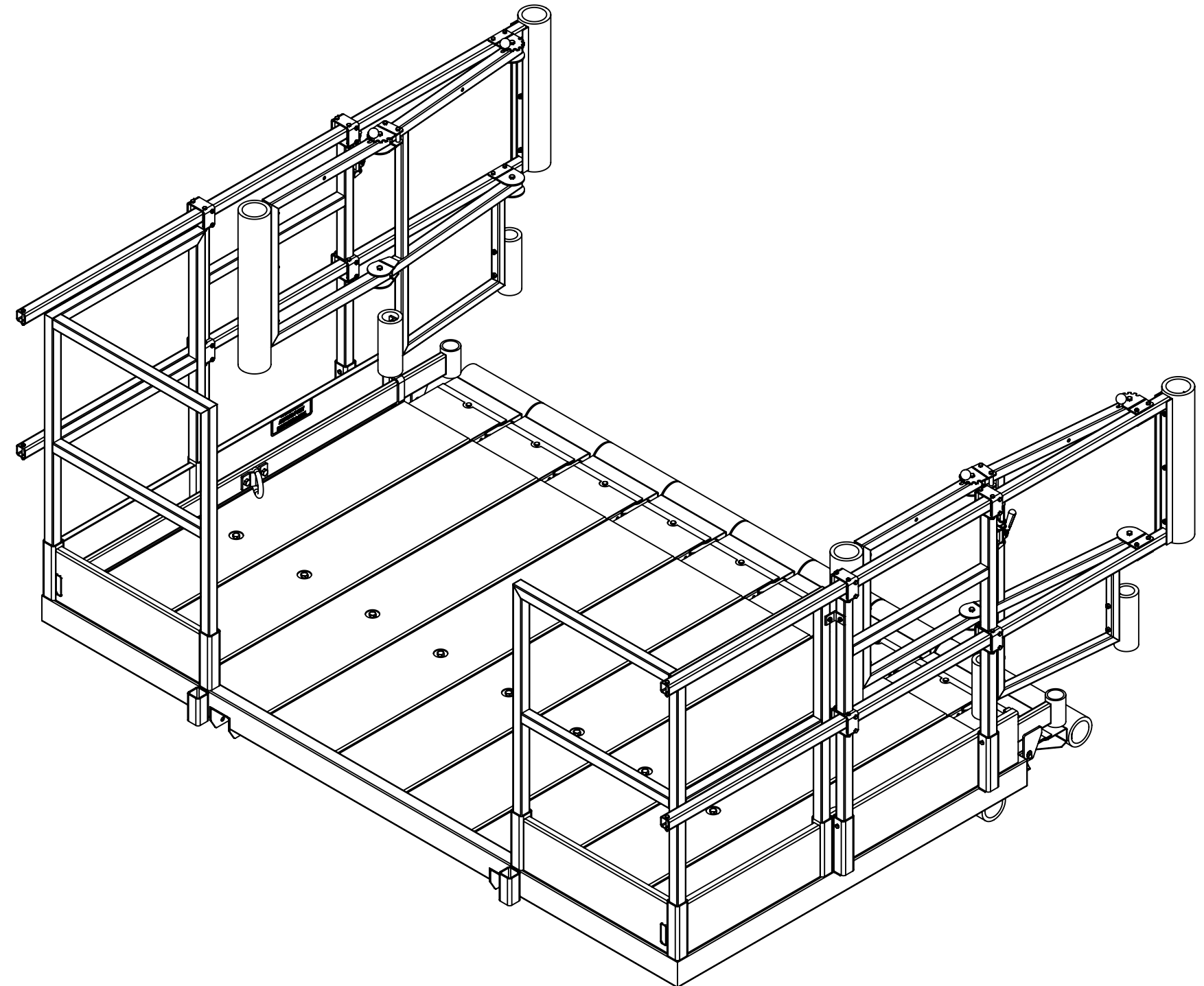


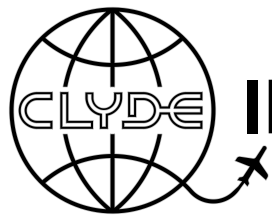
ILLUSTRATED PARTS CATALOG

15F3350 ASSEMBLY

ITEM NO.	PART NUMBER	QTY.	DESCRIPTION
1	15W6487	1	PLATFORM WELD
2	15W6488	9	STEP WELD
3	15W5866	1	HANDRAIL WELD R.H.
4	15W5865	1	HANDRAIL WELD L.H.
5	15W6533	2	HANDRAIL, SLIDING
6	15O5966	2	TOGGLE CLAMP
7	15O5967	2	CLAMP SPINDLE
8	15L19565	6	BUMPER
9	15W5676	6	BUMPER STRIP WELD
10	15O315	36	5/16-24 NYLOK NUT
11	15F3322	1	FOLDING HANDRAIL ASSY
12	15L26470	9	BLOCK, 3/4-6 ACME
13	15L26471	9	SHAFT, 3/4-6 ACME
14	15O319	13	1/4-28 x 2-1/2" LG. C.S.
15	15O298	35	1/4-28 NYLOK NUT
16	15W6491	9	JACK WELD
17	15L24619	9	CRANK, JACK
18	15O204	18	1/4" WASHER
19	15O4503	18	1/4-28 x 2-1/4" LG. C.S.
20	15W6492	9	BUMPER BRACKET, 12"
21	15O6492	9	CLEVIS PIN
22	15O256	9	1/8" x 1" LG. COTTER KEY
23	15L22857	9	BUMPER, STEP (LONG)
24	15W5675	9	BUMPER STRIP WELD
25	15W6493	1	TOE PLATE WELD L.H.
26	15L14429	2	STEP SPACER
27	15O246	2	3/8" WASHER
28	15O306	2	3/8-24 x 2-3/4" LG. C.S.
29	15O308	2	3/8-24 NYLOK NUT
30	15W6494	1	TOE PLATE WELD R.H.
31	15O6496	2	SAFETY LANYARD ANCHOR
32	15O623	4	1/2-20 x 2" LG. C.S.
33	15O586	4	1/2-20 NYLOK NUT
34	15L26554	2	ANGLE, BRACE
35	15O5836	8	1/4" x 1" SELF-DRILLING
36	15W6566	2	HANDRAIL, ROLLER
37	15O3604	32	1/4-28 x 3-1/4" LG. C.S.
38	15O1689	32	1/4-28 NYLOK JAM NUT
39	15O1381	4	1/4-28 x 2" LG. C.S.
40	15L26734	32	ROLLER, HANDRAIL
41	15L26616	2	BUMPER

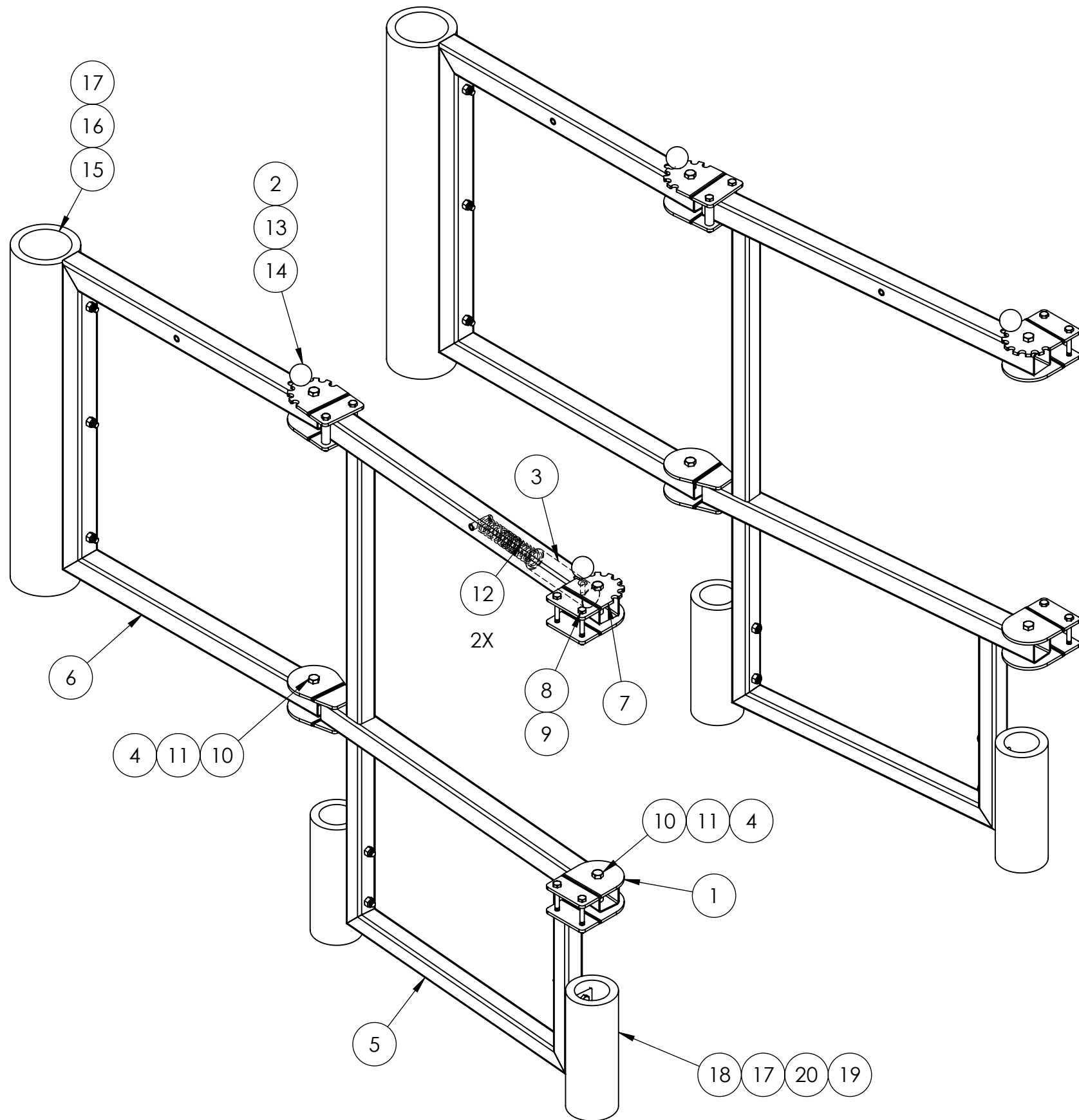
ITEM NO.	PART NUMBER	QTY.	DESCRIPTION
42	15L26622	2	BUMPER CLAMP FLAT
43	15O6535	2	DECAL, FALL ARREST ANCHOR
44	15O1940	8	10-32 x 1/2" SCHC ZP
R 45	15L30400	9	WASHER, STOP
R 46	15O229	9	1/4" SPRING LOCK WASHER
R 47	15O3038	9	1/4-28 x 3/4" LG. NYLOK C.S.





ILLUSTRATED PARTS CATALOG

15F3322 ASSEMBLY



ITEM NO.	PART NUMBER	QTY.	DESCRIPTION
1	15L25161	6	BLANK PLATE
2	15O6186	4	SET SCREW, 5/16-18 x 1-1/2" SS
3	15L25165	4	LATCH BLOCK
4	15L25164	8	BUSHING, PIVOT
5	15W6536	2	FIRST RAIL WELD
6	15W6218	2	SECOND RAIL WELD
7	15L25160	4	INDEX PLATE
8	15O4503	12	1/4-28 x 2-1/4" LG. C.S.
9	15O298	12	1/4-28 NYLOK NUT
10	15O523	8	3/8-24 x 2-1/2" LG. C.S.
11	15O308	8	3/8-24 NYLOK NUT
12	15L4863	8	SPRING, INSIDE
13	15L25338	4	SLEEVE, THREADED
14	15O6187	4	RED BALL KNOB, 1-1/4" DIA., 5/16-18
15	15L26485	2	BUMPER
16	15W4886	2	BUMPER STRIP WELD
17	15O315	14	5/16-24 NYLOK NUT
18	15L26613	4	BUMPER
19	15L26614	2	BUMPER STRIP
20	15O1282	4	5/16-24 x 2-1/2" LG. C.S.