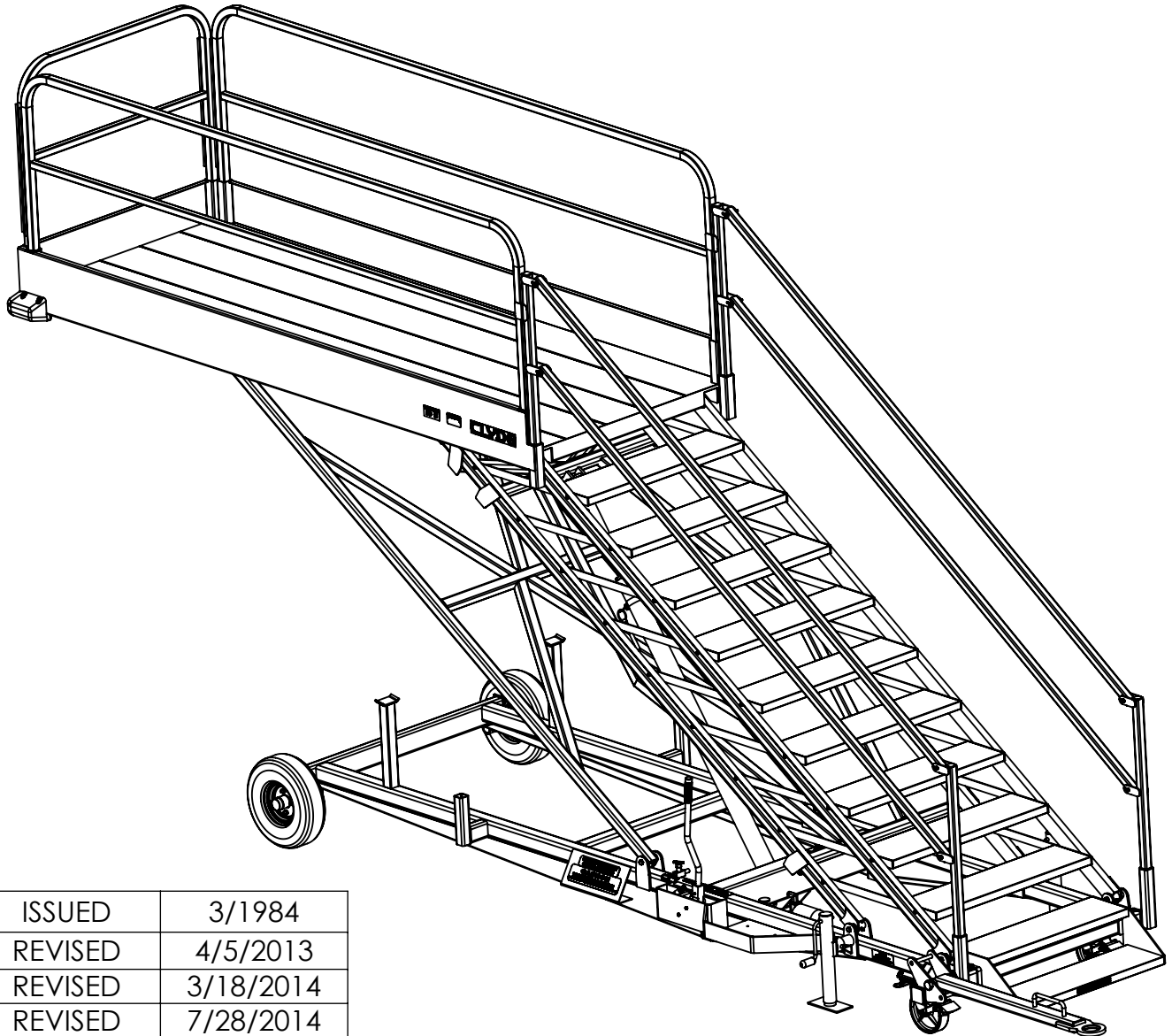


# CLYDE

## 15F1986 OWNER'S MANUAL



ISSUED	3/1984
REVISED	4/5/2013
REVISED	3/18/2014
REVISED	7/28/2014
REVISED	4/27/2015
REVISED	4/13/2023

## 3' - 10' MAINTENANCE STAND



**Clyde Machines, Inc.**

1150 North Hwy. 55

P O Box 194

Glenwood, MN 56334

Pho. 320/634-4503

Fax. 320/634-4506

Web. [www.clydemachines.com](http://www.clydemachines.com)

---

## **WARRANTY**

Clyde Machines Inc. warrants all goods of it's manufacture to be free from defects caused by faulty material or poor workmanship and will at it's option repair or replace, without charge, or allow credit for any such goods found on examination by Seller to be defective under normal use and service within one year from date of shipment to the Buyer, provided Seller is promptly notified in writing upon discovery of such defects. Goods shall not be returned to Seller or modified at Seller's expense without Seller's consent in writing. This warranty does not cover damage caused by improper use, installation, overloading, accident, neglect or harmful alterations or repairs made by others, weather conditions and acts of God. The Buyer's remedies with respect to defective good shall be exclusively limited as above provider and in no event shall the Seller be liable for consequential damage. Components purchased by the Seller are subject to the warranty policy of the original equipment manufacturer, and Seller will assist the Buyer in resolving any warranty claims if such action is required.



**Clyde Machines, Inc.**

1150 North Hwy. 55

P O Box 194

Glenwood, MN 56334

Pho. 320/634-4503

Fax. 320/634-4506

Web. [www.clydemachines.com](http://www.clydemachines.com)

---

## **INTRODUCTION:**

This manual contains instructions for operating and maintaining Model 15F1986 Maintenance Stand manufactured by Clyde Machines, Inc. Glenwood, Minnesota. Illustrated breakdowns of all parts used in the maintenance stand are included for identification of parts and parts ordering information.

## **PREPARATION FOR USE:**

The maintenance stand has been lubricated and adjusted at the factory and no additional preparation is required. A general inspection should be made to determine if any damage was sustained in transit. If any damage was sustained the transportation company should be notified immediately.

## **OPERATING INSTRUCTIONS:**

### **A. Raising the Maintenance Stand**

1. Close the needle valve.
2. Operate the hydraulic pump until platform is at desired working height. Insert the safety lock pin thru the cylinder rod and open needle valve until the pin rests against the cylinder. Close the needle valve.
3. Move stand to desired position; lock the rear casters brakes and lower stabilizer jacks.

### **B. Lowering the Maintenance Stand**

1. Raise the stabilizer jacks and unlock the rear caster brakes.
2. Pull the stand away from the working position.
3. Raise stand slightly to remove safety lock pin from the cylinder rod. Open needle valve to lower the stand.

**Caution:** Always lower the stabilizer jacks after positioning stand. Always insert the safety lock pin thru the cylinder rod after raising the platform.

### **C. Towing the Maintenance Stand**

1. Prior to fully lowering the stand place the safety lock pin in the upper most hole in the cylinder rod.
2. Open the needle valve to fully lower the stand. The front platform support frame will rest on the support tubes on the frame and the safety lock pin will rest on the body of the cylinder.



**Clyde Machines, Inc.**

1150 North Hwy. 55  
P O Box 194  
Glenwood, MN 56334

Pho. 320/634-4503

Fax. 320/634-4506

Web. [www.clydemachines.com](http://www.clydemachines.com)

**MAINTENANCE INFORMATION:**

**DAILY**

- Check for any loose or missing hardware tighten or replace as necessary.
- Check for structural frame damage.
  - A damaged maintenance stand should not be used until repaired or replaced.

**BI-YEARLY**

- Grease the major pivot points on the maintenance stand, grease zerks are provided.
  - Use Lithium EP2 or equivalent.

**ANNUALLY**

- The wheels should be removed and the hub bearings repacked with grease.
  - Use Lithium EP2 or equivalent.
- Check hydraulic oil level – should be no greater than 1-1/2” down from top hydraulic tank with stand in lowest position. If necessary to add oil, use Mobil DTE-10 Excel 15 or equivalent.
  - Standard Tank capacity 2.5 gallons
  - Optional Air Pump capacity 2 gallons
- Replace the hydraulic filter cartridge. Replacement cartridge part number 1503050.
- Check the step attachment bolts for wear and/or deformations. Replace as necessary.

**AS REQUIRED**

- Check corner bumpers for damage replace as necessary.
- Replace damaged items as necessary.

**BOLT TORQUE CHART:**

Torque Values of Grade 5 Fine Thread (SAE) Fasteners  
All Torque Specified in FT.-LBS. (Dry)

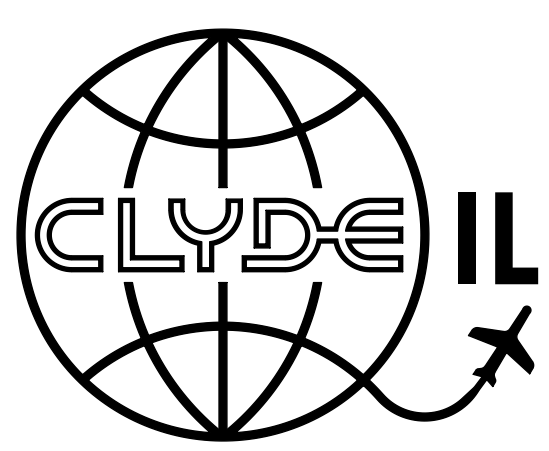
Bolt Dia.	1/4-28	5/16-24	3/8-24	7/16-20	1/2-20	5/8-18	3/4-16	7/8-14	1-12
Install Torque	9	20	35	55	90	170	297	474	722

Torque Values of Grade 5 Course Thread (SAE) Fasteners  
All Torque Specified in FT.-LBS. (Dry)

Bolt Dia.	1/4-20	5/16-18	3/8-16	7/16-14	1/2-13	5/8-11	3/4-10	7/8-9	1-8
Install Torque	9	17	31	49	75	150	267	429	644

**LOAD TESTING:**

It is recommended that the maintenance stand be load tested every 5 years or after a significant damage event and subsequent repairs. With the platform adjusted to the lowest position, a load twice the rated load should be placed on the center of the platform and the entire stand be observed for any material or weld failures. The load should be tethered in such a way that in the event of a failure of the stand, the load will not fall more than several inches.

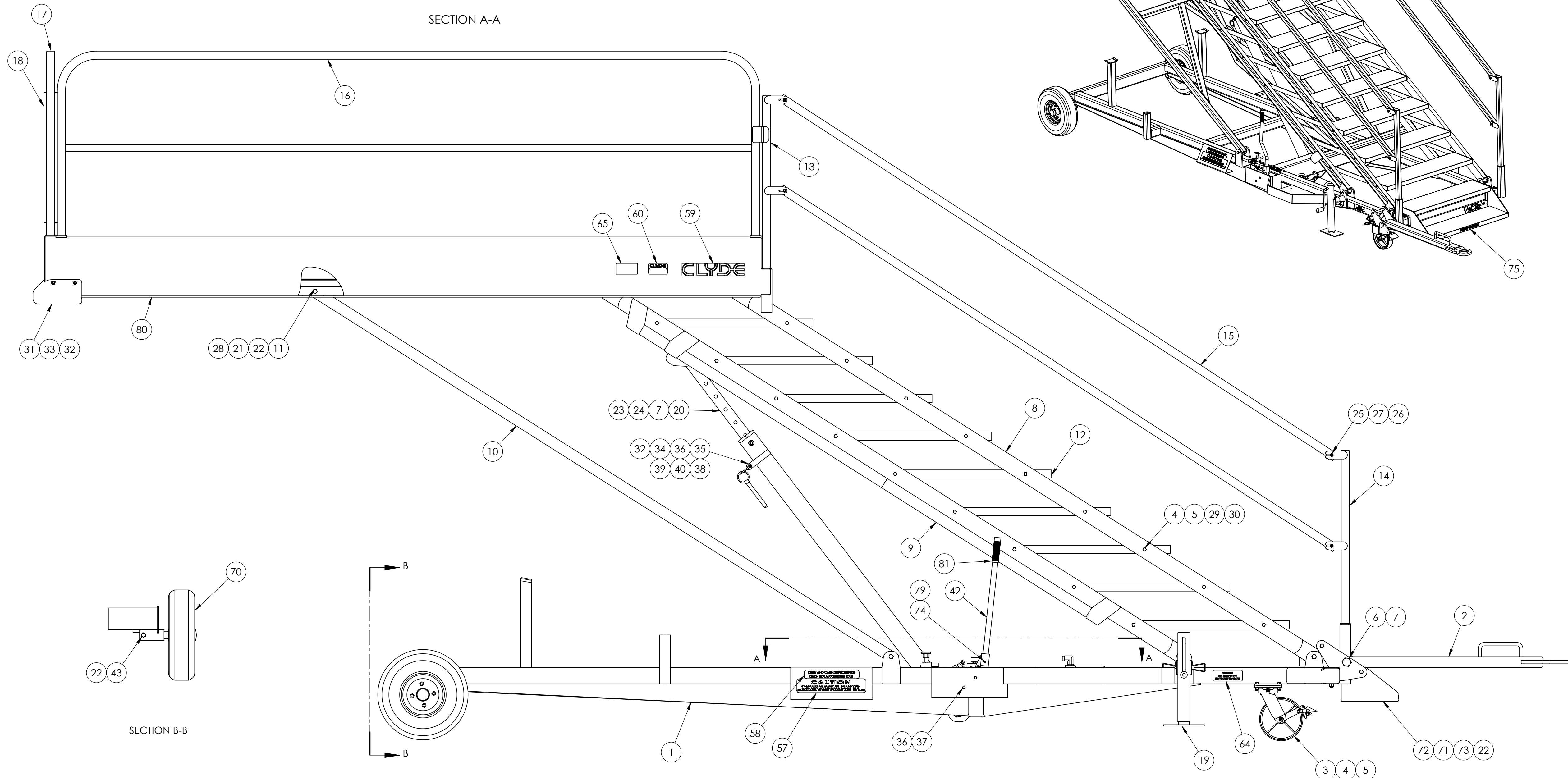
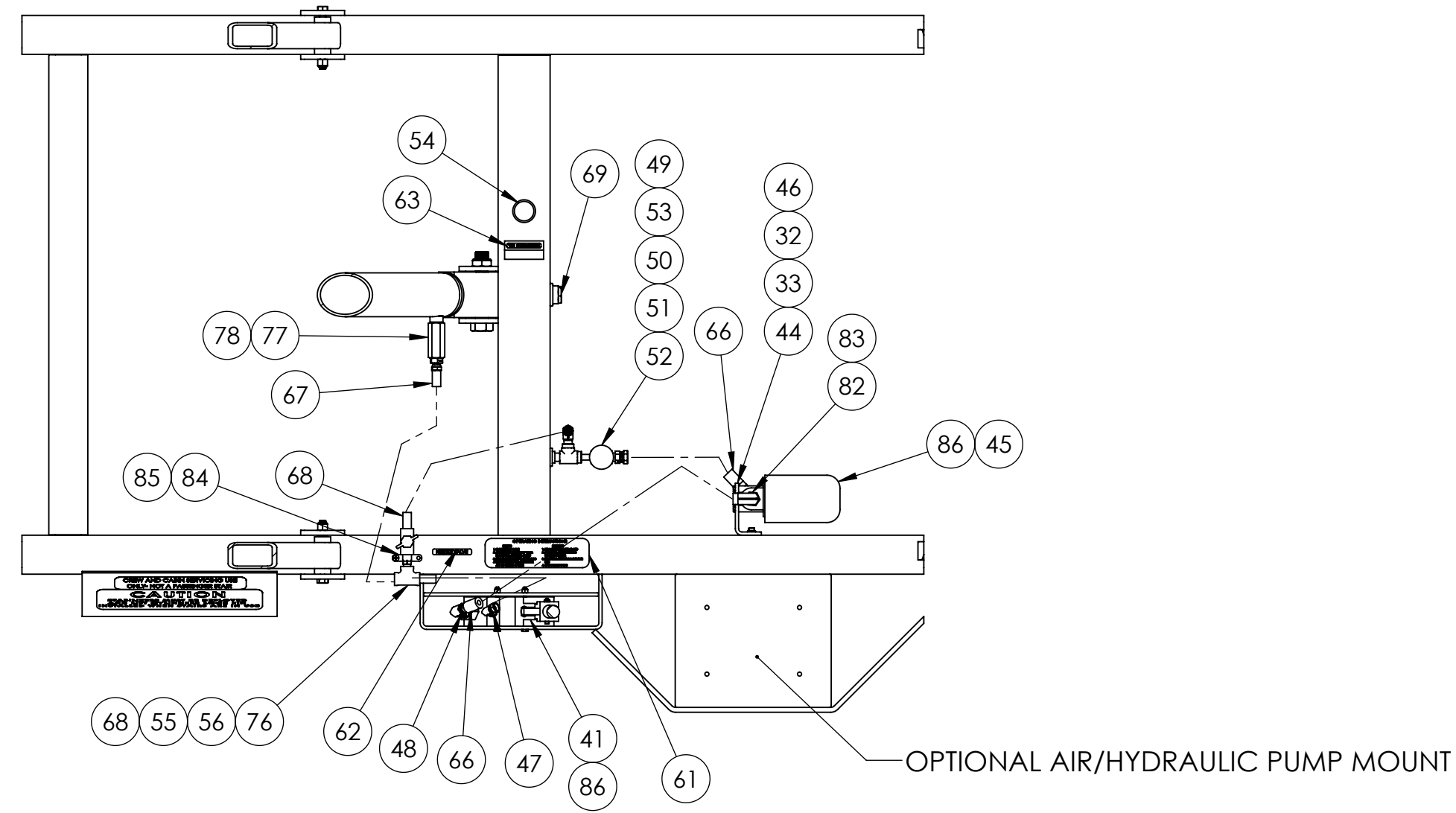


# ILLUSTRATED PARTS CATALOG

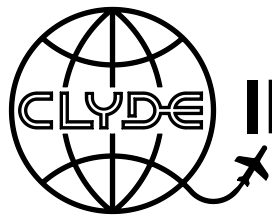
## 15F1986 ASSEMBLY

### OPTIONAL TOWBAR

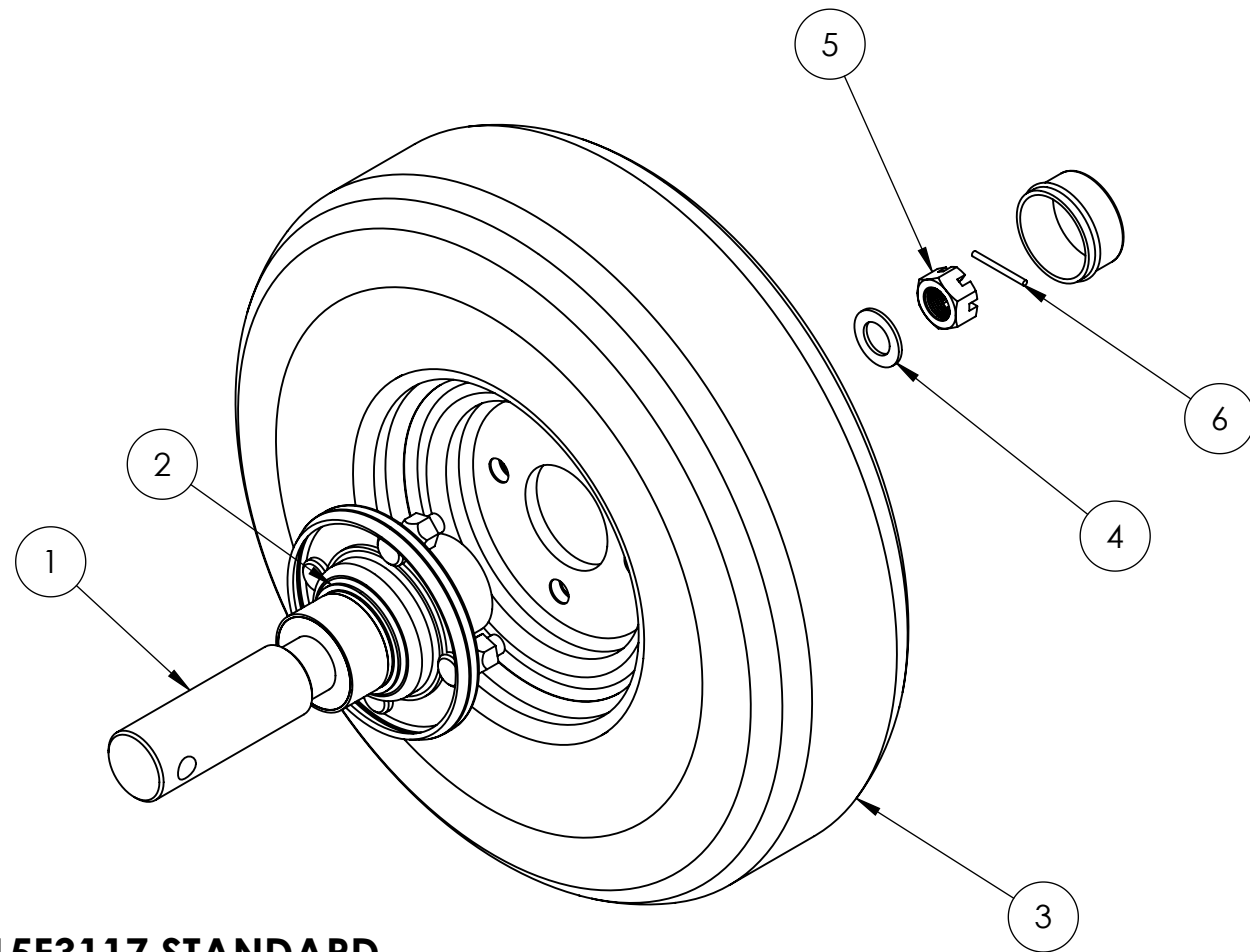
PART NUMBER	QTY.	DESCRIPTION
15W3839	1	TOWBAR WELDMENT (WITH SKEG)



ITEM NO.	PART NUMBER	QTY.	DESCRIPTION
1	15W3911	1	MAIN FRAME WELD
2	15W6429	1	TOWBAR WELDMENT
3	15O4471	2	SWIVEL CASTER WITH BRAKE
4	15O134	44	3/8-16 x 1-1/4" HHCS ZINC
5	15O588	44	3/8-16 NYLOK NUT
6	15O5754	1	1-8 x 6" LG. HHCS ZINC
7	15O7280	3	1-8 NYLOK JAM NUT
8	15W3912	2	LIFT RAIL TUBE WELD
9	15W3913	1	LOWER LIFT WELD
10	15W3916	1	FRONT PLATFORM SUPPORT
11	15O135	12	1/2-13 x 4-1/2" LG. HHCS ZINC
12	15W3829	9	STEP WELDMENT
13	15W3834	2	TOP HANDRAIL POST
14	15W3835	2	BOTTOM HANDRAIL POST WELD
15	15L14774	4	HAND RAIL TUBE
16	15W3914	2	SAFETY RAIL WELDMENT
17	15W3837	1	REMOVABLE SAFETY RAIL WELDMENT
18	15L17509	4	SPONGE RUBBER
19	15O4864	2	JACK
20	15O5343	1	HYDRAULIC CYLINDER
21	15L14428	12	LIFT RAIL SPACER
22	15O1718	16	1/2-13 NYLOK NUT
23	15O3726	1	1-8 x 5-1/2" LG. HHCS ZINC
24	15O3594	1	1-8 x 4" LG. HHCS ZINC
25	15O578	8	5/16-18 NYLOK NUT
26	15O1923	8	5/16-18 x 2-3/4" LG. HHCS ZINC
27	15O316	16	5/16" AN WASHER
28	15O5866	12	GREASE ZERK 45 deg
29	15L14429	36	STEP SPACER
30	15O246	36	3/8" WASHER
31	15O3235	2	CORNER BUMPER
32	15O204	20	1/4" WASHER
33	15O3323	18	1/4-20 x 3/4" LG. SELF TAPPING
34	15O1839	1	1/4-20 x 1" LG. HHCS ZINC
35	15O5514	1	CYLINDER STRAP
36	15O580	3	1/4-20 NYLOK NUT
37	15O7260	2	1/4-20 x 3-1/4" LG. HHCS ZINC
38	15L16640	1	CHAIN
39	15O4459	1	BALL PIN
40	15O4006	1	S HOOK
41	15O4446	1	DUAL ACTING PUMP
42	15L14430	1	HANDLE PUMP
43	15O119	2	1/2-13 x 2-3/4" LG. HHCS ZINC
44	15L21946	1	OIL FILTER BRACKET
45	15O2749	1	FILTER ELEMENT MOUNT
46	15O2552	2	1/4-20 x 3/4" LG. HHCS ZINC
47	15O4467	1	FITTING, 9/16NF x 1/4 SWIVEL 90
48	15O4468	1	SWIVEL, 6901-8-6
49	15O2057	1	SERVICE TEE, 5602-06-06-06
50	15O1016	1	1501-06-04 FITTING
51	15O2124	1	3/8 CLOSE NIPPLE
52	15O4847	1	3/8 GATE VALVE
53	15O478	1	SWIVEL ADAPTER, 1404-06-06
54	15O6285	1	BREATHER CAP, 3/4 NPT
55	15O2995	1	1/4 NEEDLE VALVE
56	15O1108	1	1/4 HEX NIPPLE
57	15O5828	1	CAUTION PLACARD
58	15O5830	1	WARNING PLACARD
59	15O	2	CLYDE LOGO
60	15O4099	1	SERIAL NUMBER PLATE
61	15L14436	1	OPERATE INS. PLACARD
62	15L13489	1	PLACARD
63	15L13490	1	PLACARD, HYDRAULIC OIL
64	15L16864	1	WARNING PLACARD
65	15O5895	1	PLACARD, WEIGHTS
66	15F2166	2	HYDRAULIC HOSE ASSEMBLY
67	15F1942	1	HYDRAULIC HOSE ASSEMBLY
68	15F1944	2	HYDRAULIC HOSE ASSEMBLY
69	15O5939	1	3/4 N.P.T. SIGHT PLUG
70	15F3117	2	4-BOLT HUB/TIRE ASSY
71	15O273	2	1/2-13 x 4" LG. HHCS ZINC
72	15W6399	1	REMOVABLE STEP WELD
73	15O302	2	1/2" AN WASHER
74	15O7287	1	#10-24 x 1-3/4" LG. SOCKET HEAD C.S.
75	15O6485	1	PLACARD, WARNING
76	15O1117	1	5605-04-04-04 TEE
77	15O5937	1	CHECK VALVE
78	15O680	1	1404-06-04 FITTING
79	15O7289	1	#10-24 NYLOK JAM NUT
80	15W6948	1	PLATFORM WELDMENT
81	15O1070	1	HANDLE GRIP
82	15O3057	2	3/4 x 3/8 HEX BUSHING
83	15O2080	2	3/8 STREET ELBOW
84	15O2587	1	1/2" RIDGID CLAMP
85	15O6286	1	1/4-20 x 3/4 PHILLIPS TYPE 23 SCREW
86	15O3050	1	FILTER ELEMENT



# ILLUSTRATED PARTS CATALOG

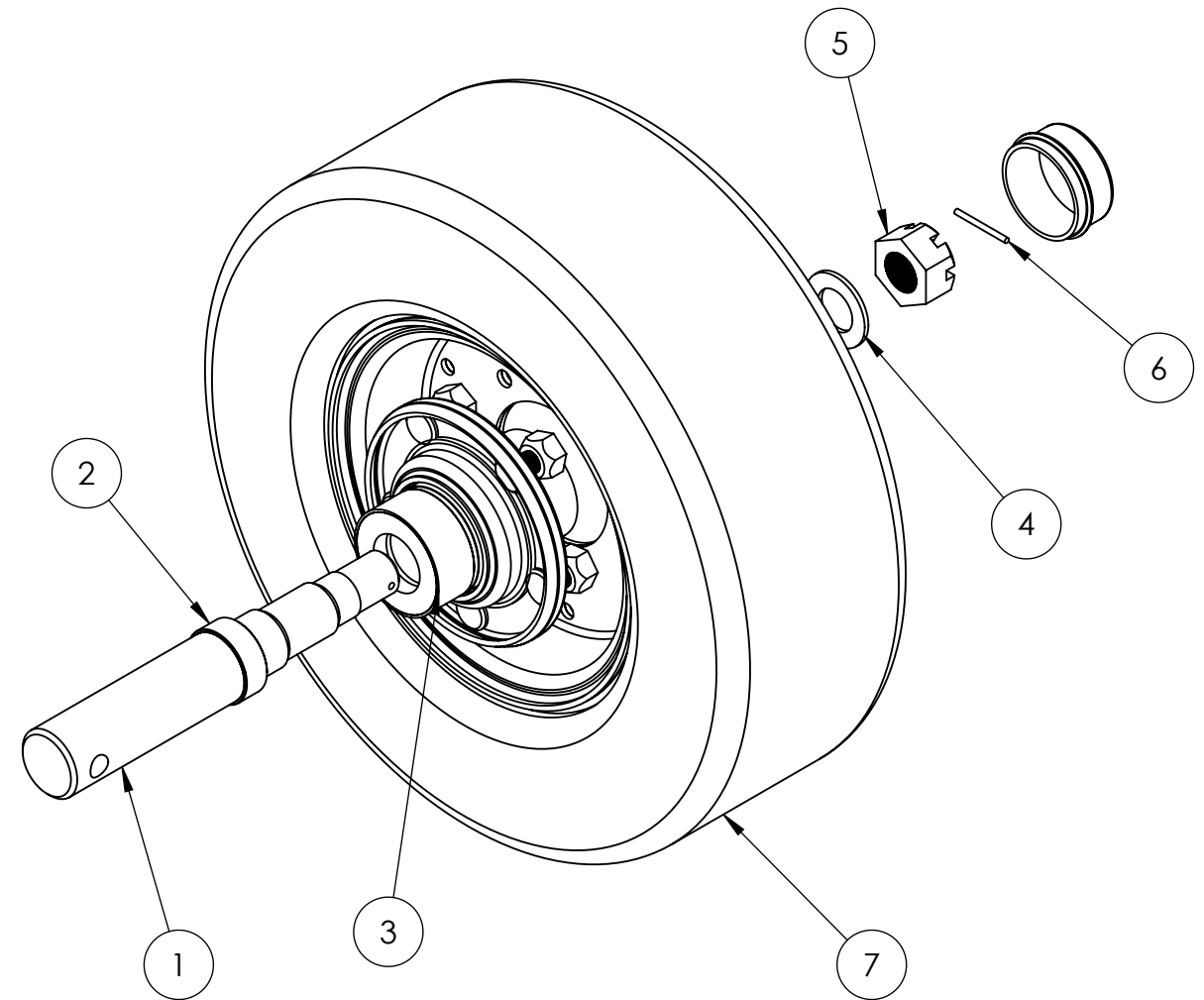


**15F3117 STANDARD  
4-BOLT PNEUNATIC TIRE**

ITEM NO.	PART NUMBER	QTY.	DESCRIPTION
1	15L25417	1	SPINDLE
2	15O4450	1	4 BOLT HUB
3	15O4553	1	WHEEL ASS'Y
4	15O321	1	3/4" AN WASHER
5	15O3113	1	3/4-16 SLOTTED NUT
6	15O269	1	1/8" x 1-1/2" LG. COTTER KEY

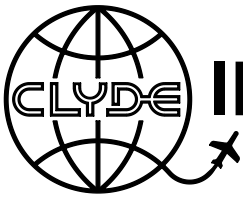
**OPTIONAL TIRE**

ITEM NO.	PART NUMBER	QTY.	DESCRIPTION
A	15O4566	1	400 x 8 FOAM FILLED PNEUMATIC TIRE
B	15F1985	1	SOLID TIRE (4-BOLT RIM)



**15F3118 OPTIONAL  
5-BOLT SOLID TIRE**

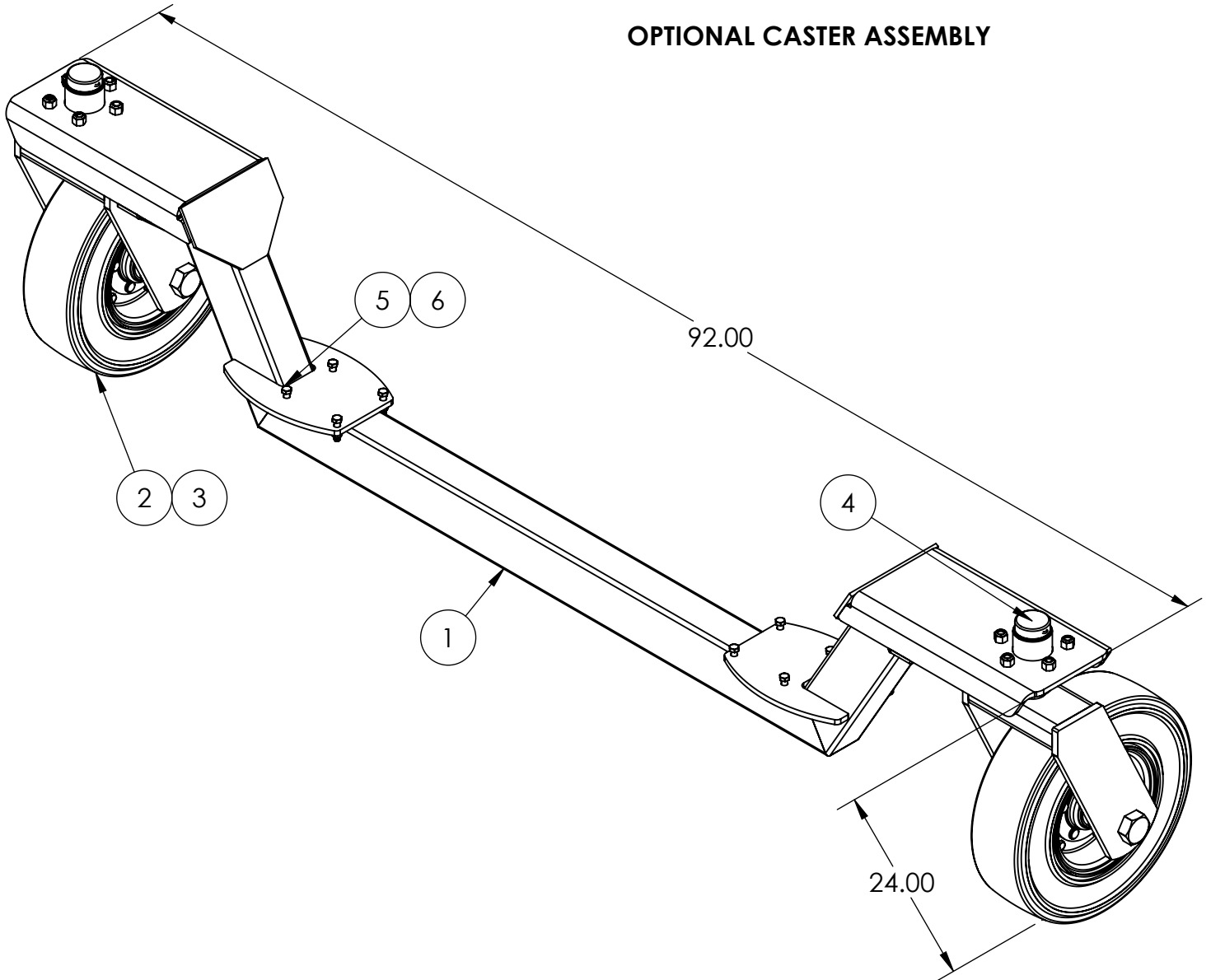
ITEM NO.	PART NUMBER	QTY.	DESCRIPTION
1	15L22544	1	SPINDLE, FRONT AXLE
2	15L22728	1	TUBE, COLLAR WIPE
3	15O4668	1	CAST HUB
4	15O4722	1	1" AN WASHER
5	15O4399	1	1-14 UNF SLOTTED NUT
6	15O269	1	1/8" x 1-1/2" LG. COTTER KEY
7	15F1892	1	TIRE & WHEEL ASSEMBLY



# ILLUSTRATED PARTS CATALOG

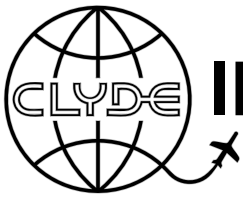
15F2496 ASSEMBLY

## OPTIONAL CASTER ASSEMBLY



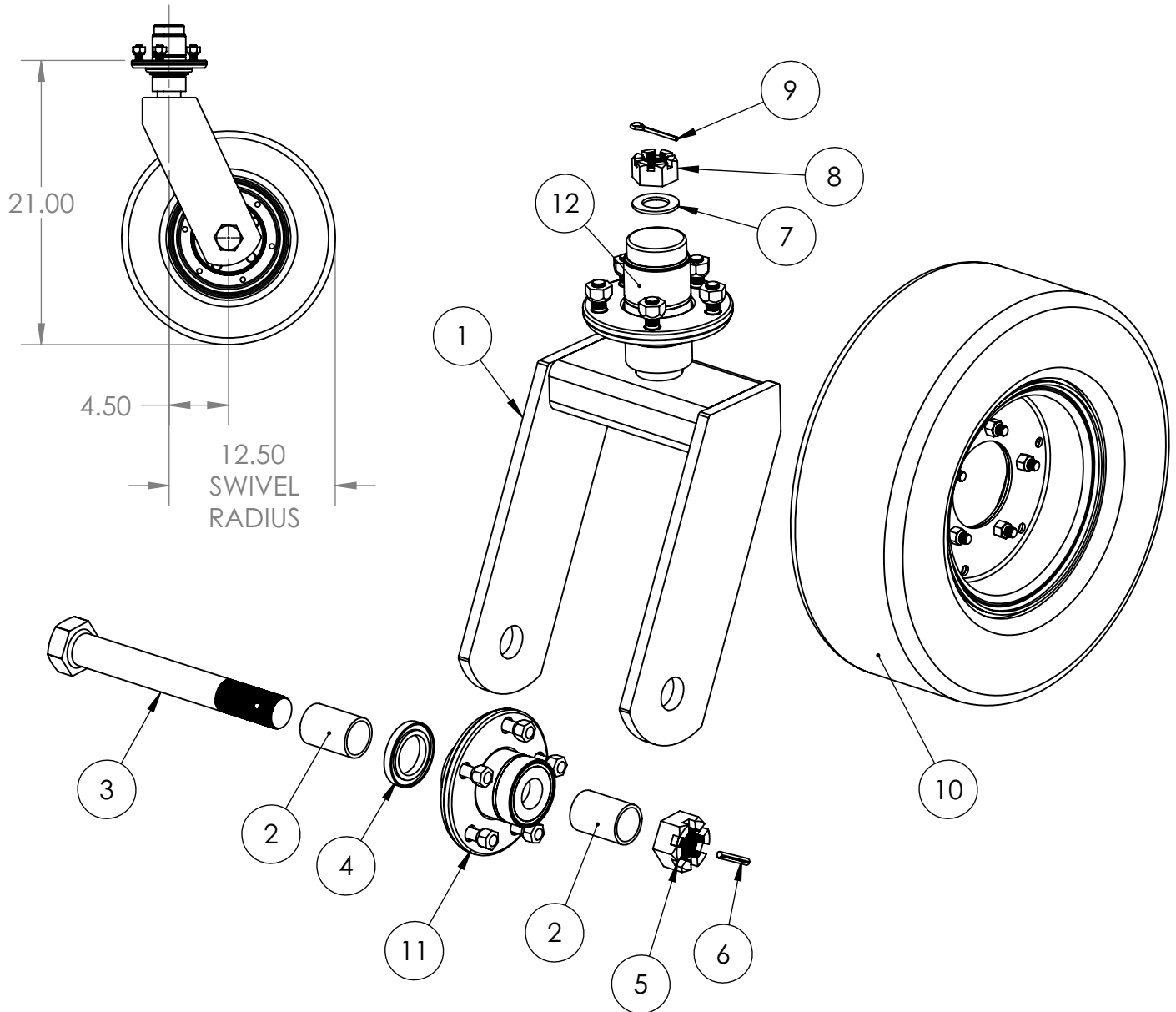
ITEM NO.	PART NUMBER	QTY.	DESCRIPTION
1	15W5082	1	CASTER MOUNT WELD
2	15F2700	2	CASTER ASSEMBLY S/N/'S AFTER 56400
3	15F2448	2	CASTER ASSEMBLY S/N/'S UP TO 56399
4	15O586	10	1/2-20 NYLOK NUT
5	15O739	8	3/8-16 x 1-1/2" LG. HHCS ZINC
6	15O588	8	3/8-16 NYLOK NUT

R  
R



# ILLUSTRATED PARTS CATALOG

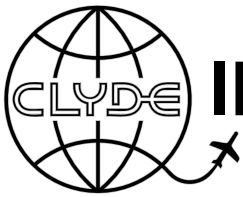
15F2700 ASSEMBLY



**CASTER ASSEMBLY S/N'S AFTER 56400**

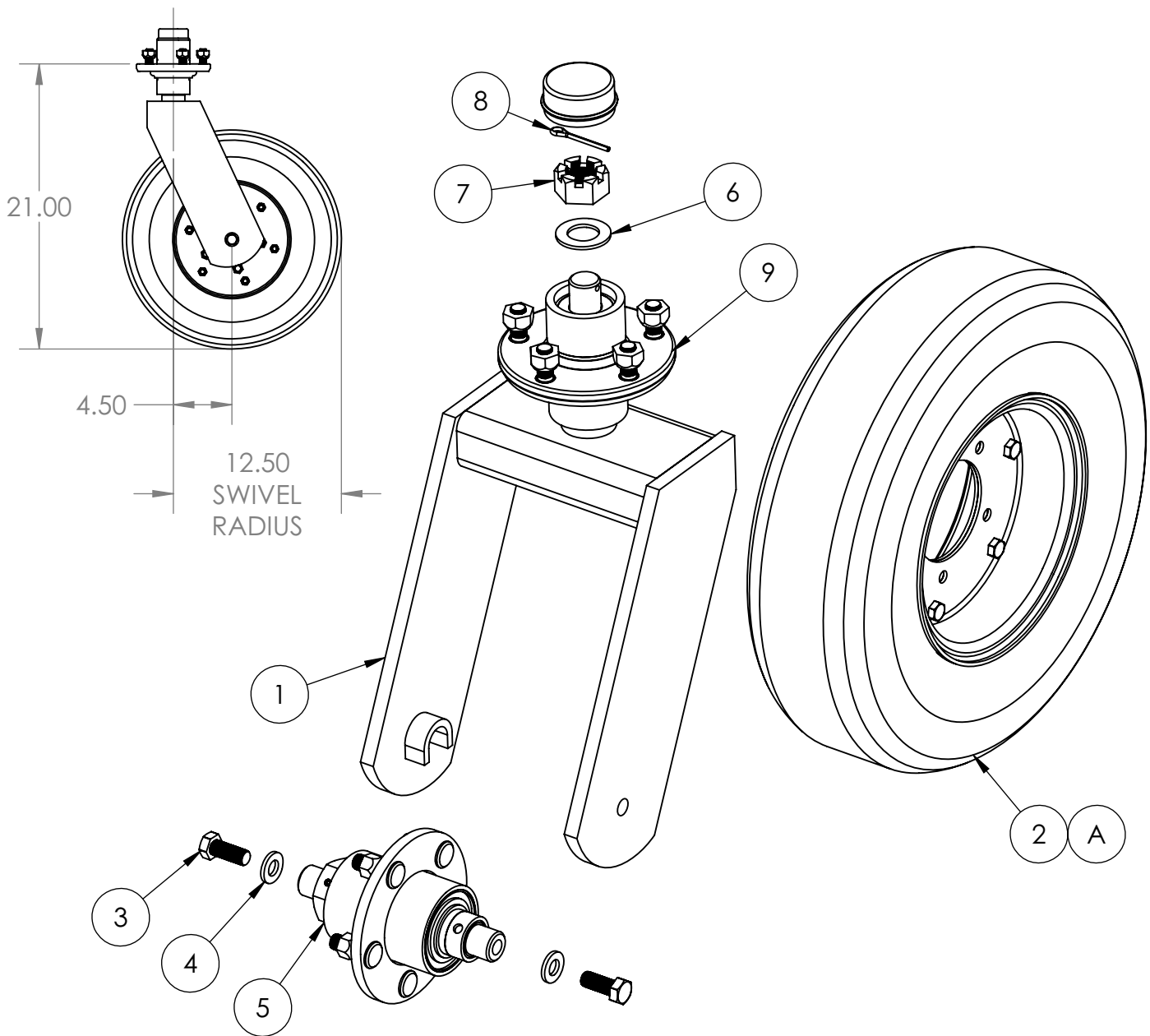
ITEM NO.	PART NUMBER	QTY.	DESCRIPTION
1	15W5508	1	CASTER FRAME WELD
2	15L22082	2	SPACER
3	15L22081	1	AXLE BOLT
4	15O5272	1	SEAL
5	15O5055	1	1 1/4-12 SLOTTED NUT
6	15O318	1	1/4 X 1 3/4 LG. ROLL PIN
7	15O4722	1	1" AN WASHER
8	15O4399	1	1-14 UNF SLOTTED NUT
9	15O2258	1	1/8" x 2" LG. COTTER KEY
10	15F1892	1	TIRE & WHEEL ASSEMBLY
11	15O4492	1	5 BOLT HUB
12	15O4668	1	CAST HUB





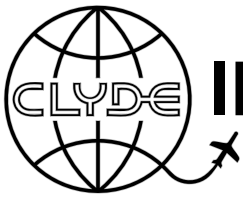
# ILLUSTRATED PARTS CATALOG

15F2448 ASSEMBLY



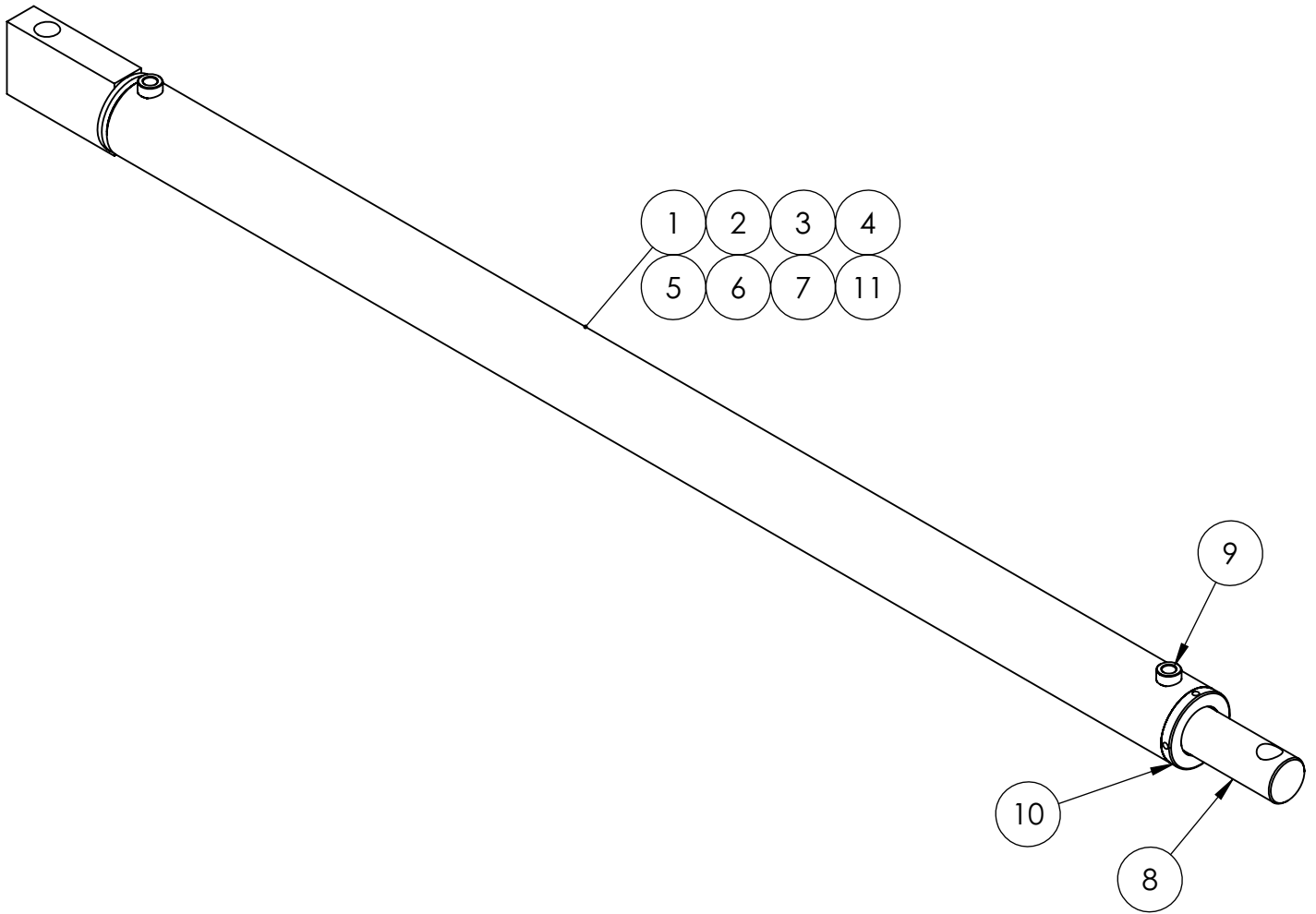
CASTER ASSEMBLY S/N'S UP TO 56399

ITEM NO.	PART NUMBER	QTY.	DESCRIPTION
1	15W4979	1	CASTER YOKE WELD
2	15F1893	1	TIRE & WHEEL ASSEMBLY
3	15O655	2	1/2-20 x 1-1/4" LG. NYLOK C.S.
4	15O126	2	1/2" SPRING LOCK WASHER
5	15F2272	1	AXLE ASSEMBLY
6	15O4722	1	1" AN WASHER
7	15O4399	1	1-14 UNF SLOTTED NUT
8	15O2258	1	1/8" x 2" LG. COTTER KEY
9	15O4668	1	CAST HUB
A	15F1892	1	<b>OPTIONAL</b> 400 x 8 SOLID TIRE

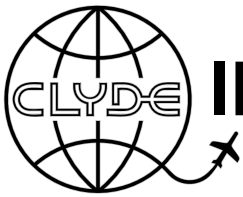


# ILLUSTRATED PARTS CATALOG

15O5343 ASSEMBLY

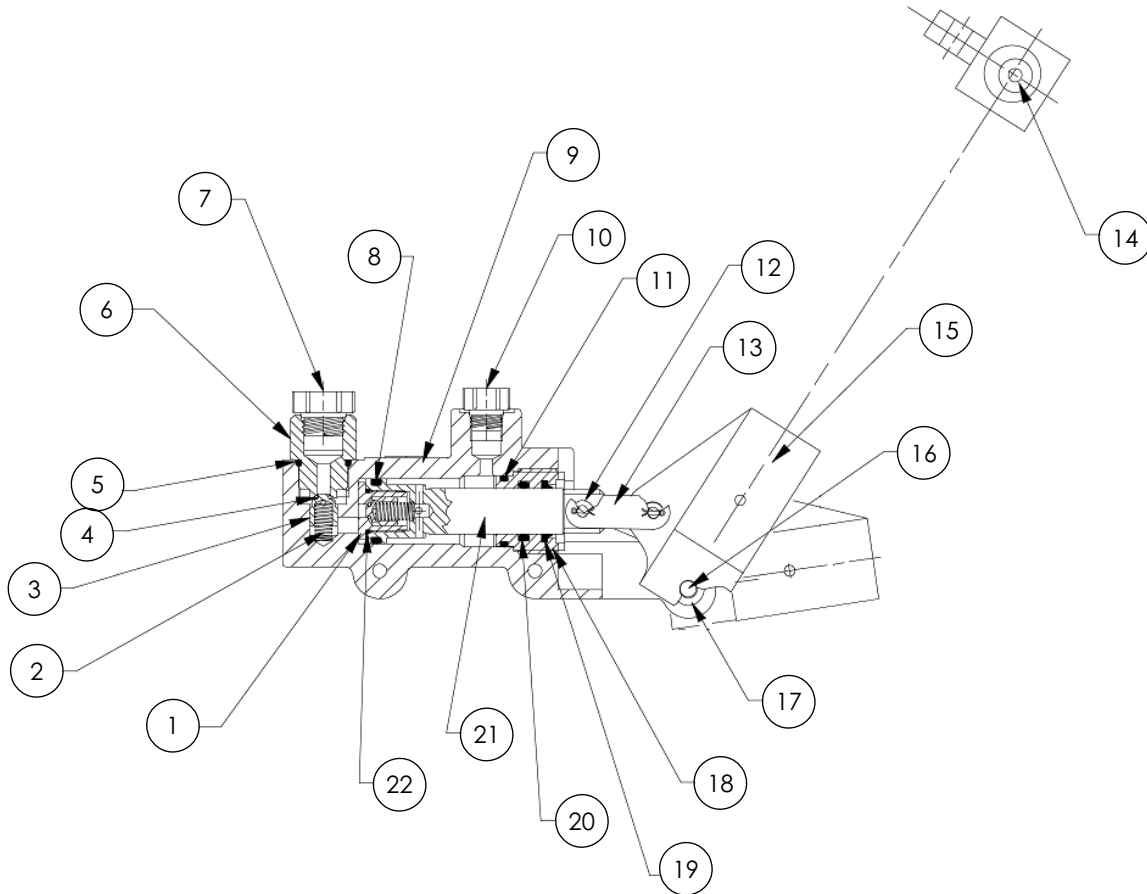


ITEM NO.	PART NUMBER	QTY.	DESCRIPTION
1	15O5365	1	JACKET ASSEMBLY
2	15O5359	1	CASTLE NUT
3	15O5360	1	WEAR RING
4	15O5361	1	PISTON
5	15O5362	1	POLYPAK
6	15O5363	1	BACKUP WASHER
7	15O5364	1	O-RING
8	15O5366	1	PISTON ROD
9	15O5367	1	3/8" N.P.T. BREATHER
10	15O5727	1	GLAND NUT
11	15O5368	1	ROD WIPER
12	15O5370	1	SEAL KIT (SA-300-200-RPK-WPB)



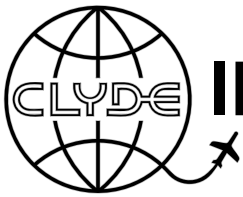
# ILLUSTRATED PARTS CATALOG

1504446 HYDRAULIC PUMP



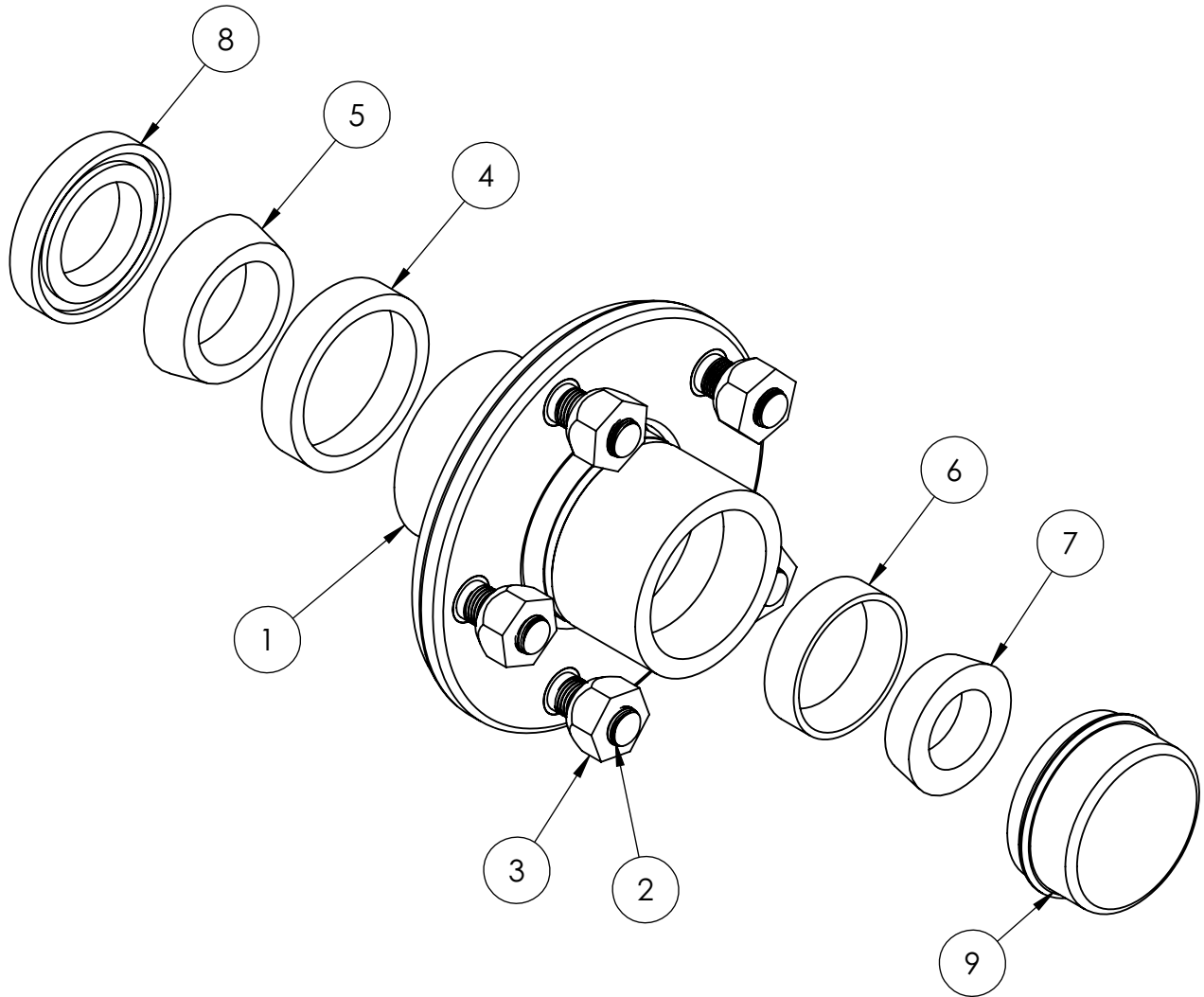
ITEM NO.	PART NUMBER	QTY.	DESCRIPTION
1	1505619	1	FITTING, O-RING BOSS
2	1505620	2	SPRING
3	1505621	2	BODY POPPET
4	1505622	2	O-RING
5	1505623	1	O-RING
6	1505624	1	FITTING, CHECK SEAT
7	1505625	1	FITTING, ORB PLUG
8	1505626	1	O-RING
9	1505627	1	BODY, DUAL ACTION HAND PUMP
10	1505628	1	FITTING, PLUG
11	1505629	1	O-RING
12	1505617	2	BUSHING, BRONZE
13	1505618	1	LINK, DOUBLE PITCH CHAIN
14	1505630	1	SCREW, SET
15	1505631	1	PIVOT, HANDLE
16	1505632	1	PIN, HINGE
17	1505633	2	BUSHING, BRONZE SHOULDER
18	1505634	1	NUT, GLAND
19	1505635	1	WIPER, ROD
20	1505636	1	O-RING
21	1505637	1	PISTON, HAND PUMP
22	1505638	1	O-RING

\*\* 1505729 REPAIR KIT (INCLUDES ITEMS 4, 5, 8, 11, 19, 20, & 22) \*\*

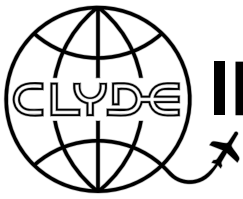


# ILLUSTRATED PARTS CATALOG

15O4668 ASSEMBLY

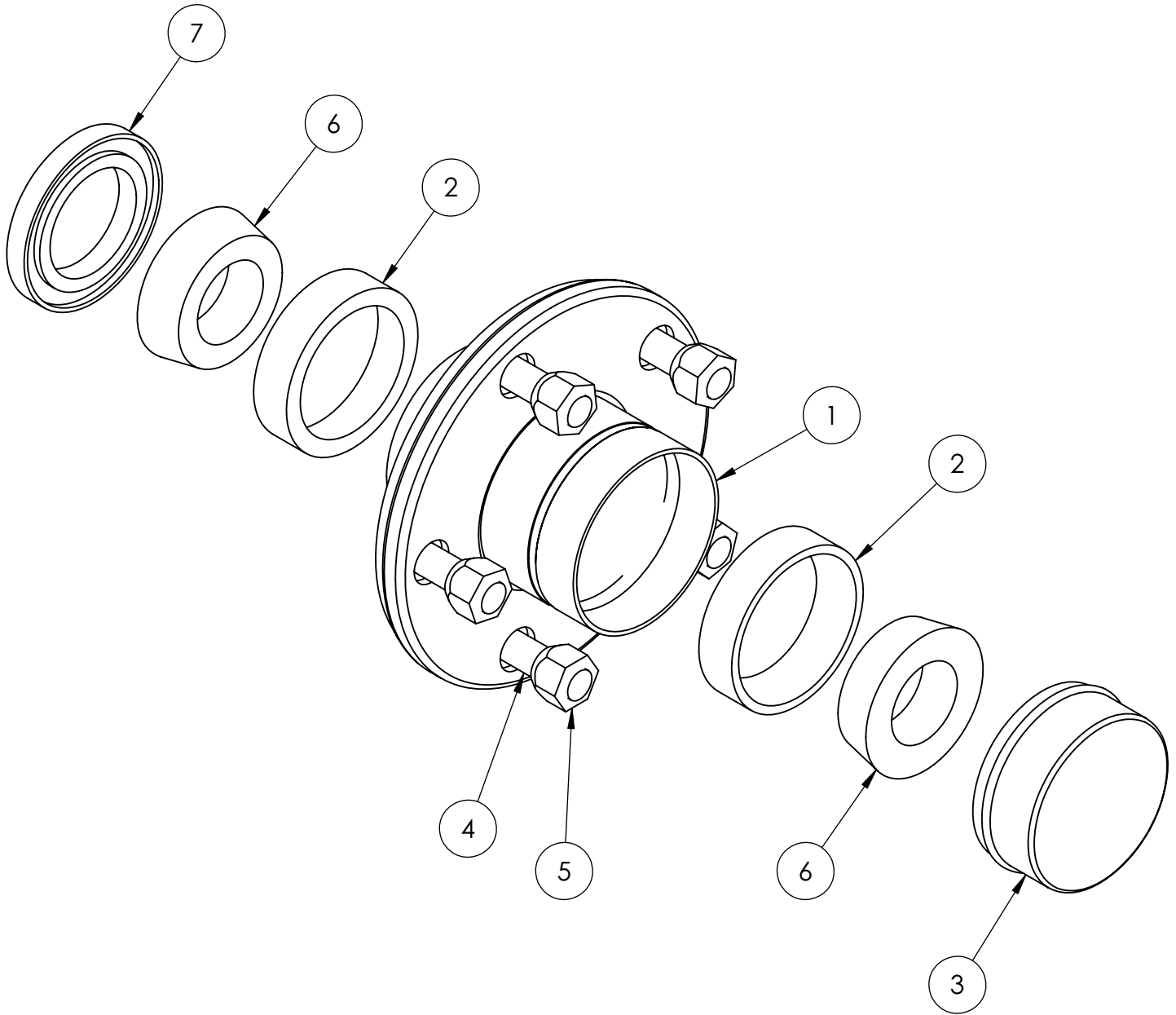


ITEM NO.	PART NUMBER	QTY.	DESCRIPTION
1	15O4823	1	HUB V-88364 #280155
2	15O4824	5	WHEEL, STUD V-88364 #913534
3	15O4827	5	LUG NUT V-88364 #912918
4	15O4849	1	INNER BEARING CUP V-88364 #L68111
5	15O4828	1	INNER BEARING CONE V-88364 #AK-L 68149
6	15O4848	1	OUTER BEARING CUP V-88364 #L44610
7	15O4825	1	OUTER BEARING CONE V-88364 #L44649
8	15O4829	1	GREASE SEAL V-88364 #17146
9	15O4826	1	DUST CAP V-88364 #909900

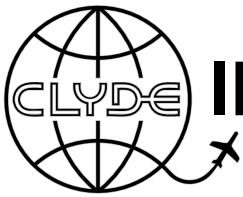


# ILLUSTRATED PARTS CATALOG

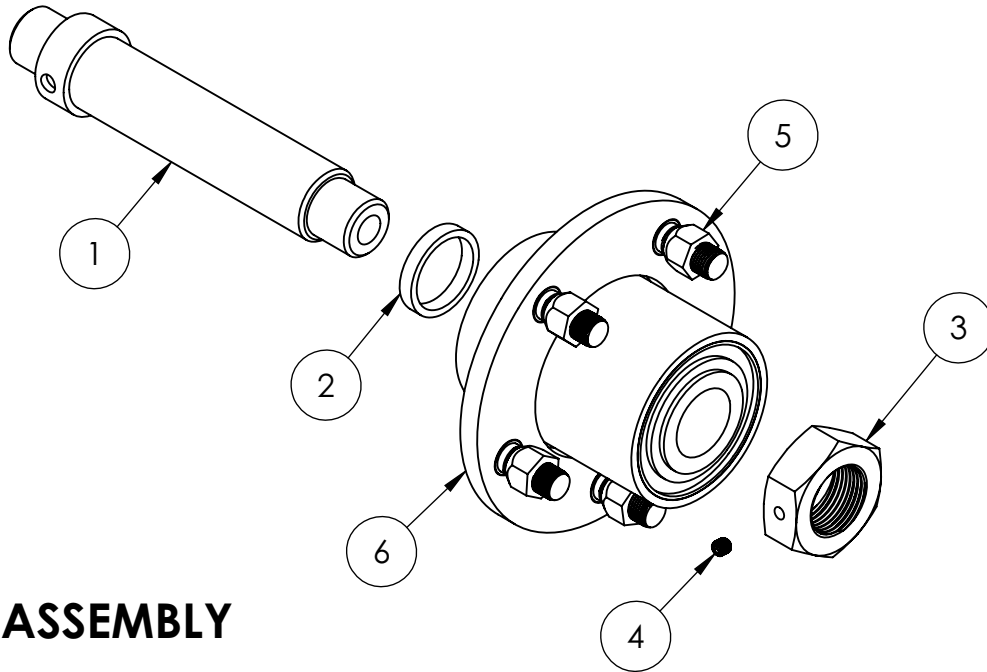
15O4492 ASSEMBLY



ITEM NO.	PART NUMBER	QTY.	DESCRIPTION
1	15O5269	1	HUB
2	15O5267	2	BEARING CUP
3	15O5266	1	DUST CAP
4	15O5270	5	WHEEL STUD
5	15O5271	5	LUG NUT
6	15O5268	2	BEARING CONE
7	15O5272	1	SEAL

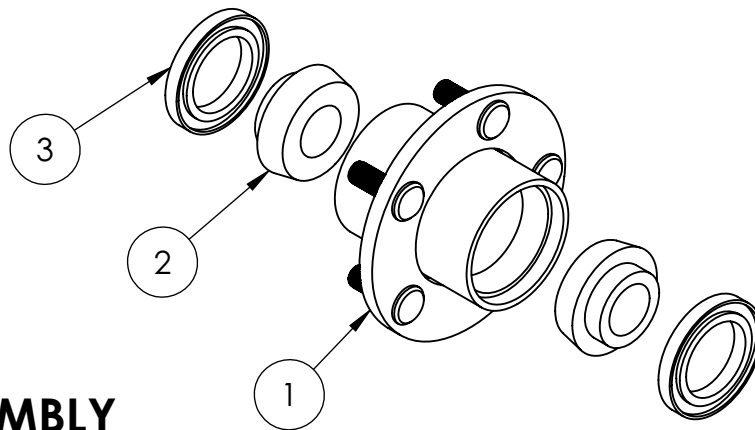


# ILLUSTRATED PARTS CATALOG



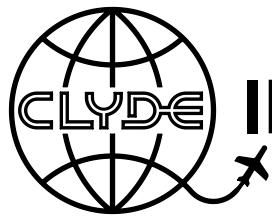
## 15F2272 ASSEMBLY

ITEM NO.	PART NUMBER	QTY.	DESCRIPTION
1	15W4522	1	AXLE WELD
2	15L17690	1	OUTSIDE EARRING STOP
3	15L17691	1	HUB RETAINER NUT
4	15O129	1	1/4-28 x 1/4" LG. SETSCREW
5	15O1413	5	LUG NUT
6	15F2280	1	HUB ASSEMBLY



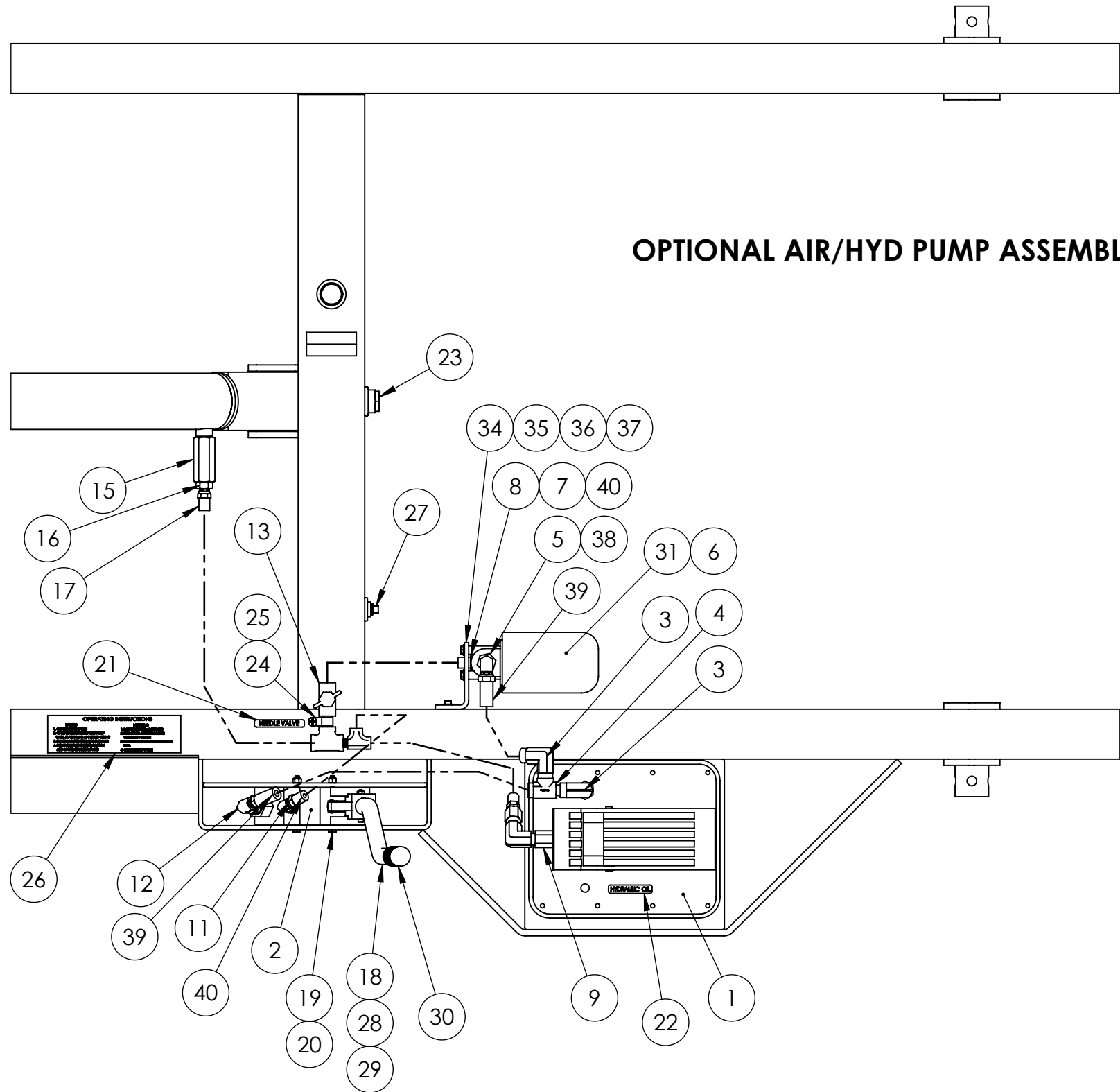
## 15F2280 HUB ASSEMBLY

ITEM NO.	PART NUMBER	QTY.	DESCRIPTION
1	15F1693	1	HUB SUB ASSEMBLY
2	15O350	2	CONE, BEARING
3	15O3227	2	GREASE SEAL



# ILLUSTRATED PARTS CATALOG

15F2646 ASSEMBLY



**OPTIONAL AIR/HYD PUMP ASSEMBLY**

ITEM NO.	PART NUMBER	QTY.	DESCRIPTION
1	15O4949	1	AIR/HYD. PUMP SPX.
2	15O4446	1	DUAL ACTING PUMP
3	15O2080	3	3/8 STREET ELBOW
4	15O2057	1	SERVICE TEE, 5602-06-06-06
5	15O3057	1	3/4 x 3/8 HEX BUSHING
6	15O2749	1	FILTER ELEMENT MOUNT
7	15O3877	1	3/4 TO 1/4 BUSHING
8	15O1110	1	1501-04-04 FITTING
9	15O5530	1	CHECK VALVE
10	15O5529	1	ADAPTER SWIVEL UNION
11	15O4467	1	FITTING, 9/16NF x 1/4 SWIVEL 90
12	15O4468	1	SWIVEL, 6901-8-6
13	15O2995	1	1/4 NEEDLE VALVE
14	15O3952	1	5602-04-04-04 STREET TEE
15	15O5937	1	CHECK VALVE
16	15O680	1	1404-06-04 FITTING
17	15F2168	1	HYDRAULIC HOSE ASSEMBLY
18	15L14430	1	HANDLE PUMP
R 19	15O7260	2	1/4-20 x 3-1/4" LG. HHCS ZINC
R 20	15O580	2	1/4-20 NYLOK NUT
21	15L13489	1	PLACARD
22	15L13490	1	PLACARD, HYDRAULIC OIL
23	15O2877	3	3/4 N.P.T. PIPE PLUG
24	15O2587	1	1/2" RIDGID CLAMP
25	15O6286	1	1/4-20 x 3/4 PHILLIPS TYPE 23 SCREW
26	15L21761	1	OPERATE INS. PLACARD
27	15O1836	1	3/8 SQ. HEAD PLUG
R 28	15O7287	1	#10-24 x 1-3/4" LG. SOCKET HEAD C.S.
R 29	15O7289	1	#10-24 NYLOK JAM NUT
R 30	15O1070	1	HANDLE GRIP
31	15O3050	1	FILTER ELEMENT
32	15O1117	1	5605-04-04-04 TEE
33	15O1108	1	1/4 HEX NIPPLE
R 34	15L21946	1	OIL FILTER BRACKET
R 35	15O5836	2	1/4" x 1" SELF-DRILLING
R 36	15O204	2	1/4" WASHER
R 37	15O2552	2	1/4-20 x 3/4" LG. HHCS ZINC
38	15O2110	1	FITTING, 3/8NPT x 3/8 SWIVEL 90
39	15F1943	2	HYDRAULIC HOSE ASSEMBLY
40	15F1937	3	HYDRAULIC HOSE ASSEMBLY