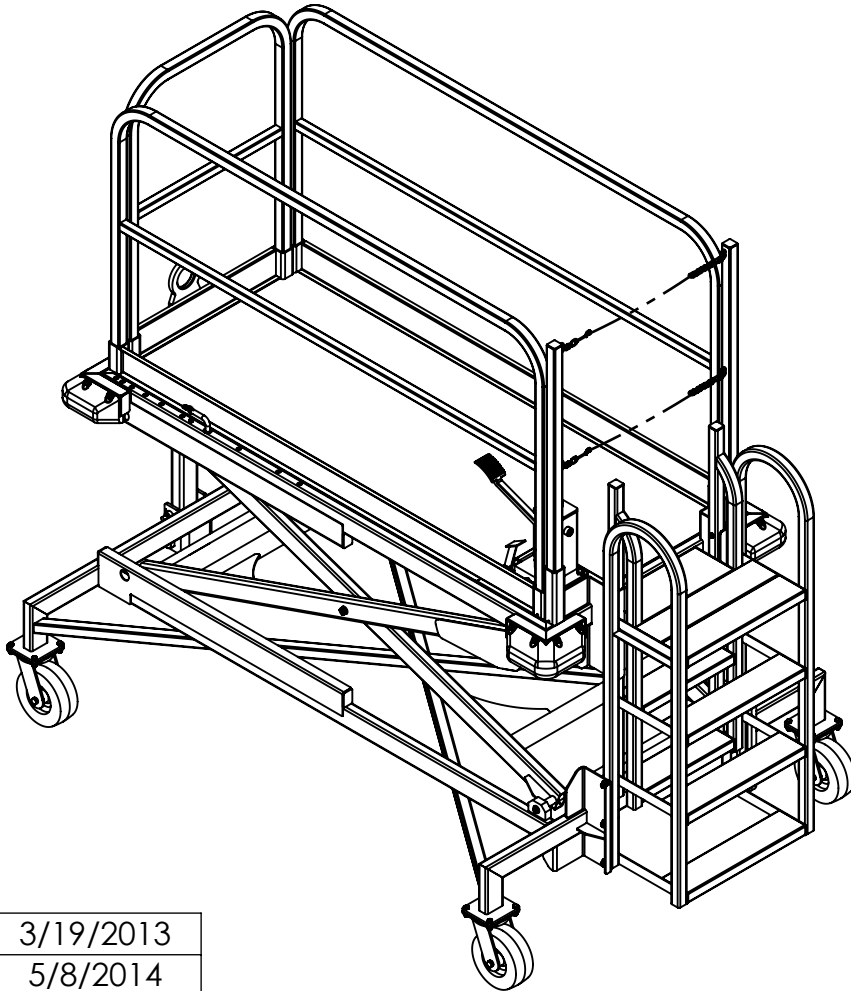


15F3060

OWNER'S MANUAL



ISSUED	3/19/2013
REVISED	5/8/2014
REVISED	9/16/2015

B-4 MAINTENANCE STAND
36" - 86"

WARRANTY

Clyde Machines Inc. warrants all goods of its manufacture to be free from defects caused by faulty material or poor workmanship and will at its option repair or replace, without charge, or allow credit for any such goods found on examination by Seller to be defective under normal use and service within one year from date of shipment to the Buyer, provided Seller is promptly notified in writing upon discovery of such defects. Goods shall not be returned to Seller or modified at Seller's expense without Seller's consent in writing. This warranty does not cover damage caused by improper use, installation, overloading, accident, neglect or harmful alterations or repairs made by others, weather conditions and acts of God. The Buyer's remedies with respect to defective good shall be exclusively limited as above provided and in no event shall the Seller be liable for consequential damage. Components purchased by the Seller are subject to the warranty policy of the original equipment manufacturer, and Seller will assist the Buyer in resolving any warranty claims if such action is required.

INTRODUCTION:

This manual contains instructions for operating and maintaining Model 15F3060 Maintenance Stand manufactured by Clyde Machines, Inc. Glenwood, Minnesota. Illustrated breakdowns of all parts used in the maintenance stand are included for identification of parts and parts ordering information.

PREPARATION FOR USE:

The maintenance stand has been lubricated and adjusted at the factory and no additional preparation is required. A general inspection should be made to determine if any damage was sustained in transit. If any damage was sustained the transportation company should be notified immediately.

OPERATING INTSTRUCTIONS:

A. Raising the Maintenance Stand

1. Operate hydraulic pump foot until platform is at desired working height.
2. Insert the safety pin.
3. Move stand to desired position and lock the casters.

B. Lowering the Maintenance Stand

1. Unlock the caster brakes.
2. Pull the stand away from the working position.
3. Raise stand slightly to remove the safety pin.
4. Slowly press hydraulic release on foot pump.

Caution: Always lock caster brakes after positioning stand. Always use the safety pin while working on the platform.

MAINTENANCE:

- **Daily**
 - Check for any loose or missing hardware, tighten or replace as necessary
 - Check for structural frame damage.
 - A damaged stand should not be used until repaired or replaced.
- **Annually**
 - Check hydraulic oil level. It should be 1-1/2" from the top of the tank when the stand is in its lowest position. If necessary to oil use Mobile DTE 10 or equivalent.
 - Capacity .35 gallons or 44.5 fluid ounces.
- **As Required**
 - Check corner bumpers for damage, replace as necessary.
 - Replace damaged items as necessary

BOLT TORQUE CHART:

Torque Values of Grade 5 Fine Thread (SAE) Fasteners

All Torque Specified in LB.-FT

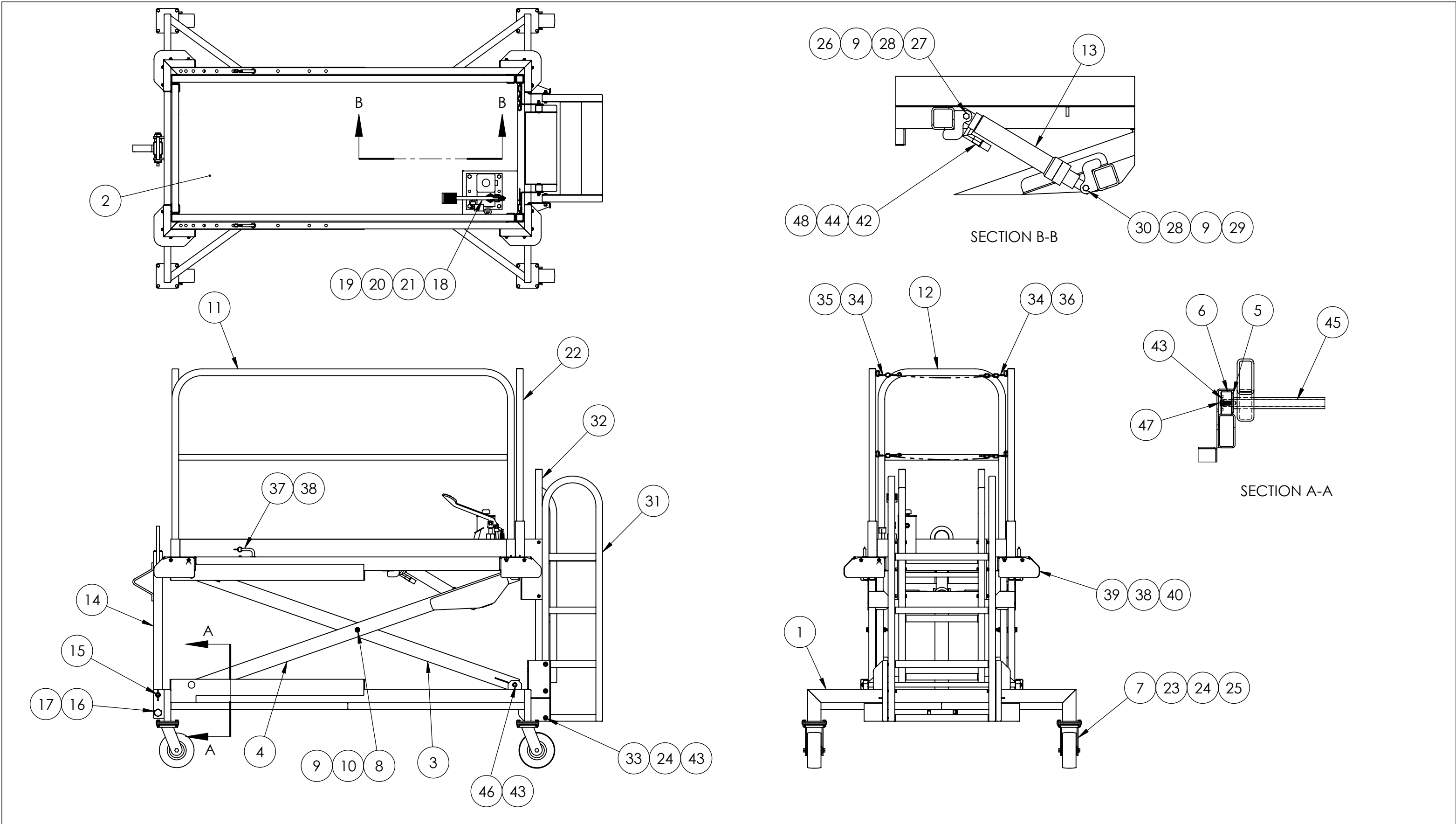
Dia.	1/4-28	5/16-24	3/8-24	7/16-20	1/2-20	5/8-18	3/4-16	7/8-14	1-12
Install Torque	9	20	35	55	90	90	90	90	90

LOAD TESTING:

It is recommended that the maintenance stand be load tested every 5 years or after a significant damage event and subsequent repairs. With the platform adjusted to the lowest position, a load twice the rated load should be placed on the center of the platform and the entire stand be observed for any material or weld failures. The load should be tethered in such a way that in the event of a failure of the stand, the load will not fall more than several inches.

ILLUSTRATED PARTS CATALOG

15F3060 ASSEMBLY



ILLUSTRATED PARTS CATALOG

15F3060 ASSEMBLY

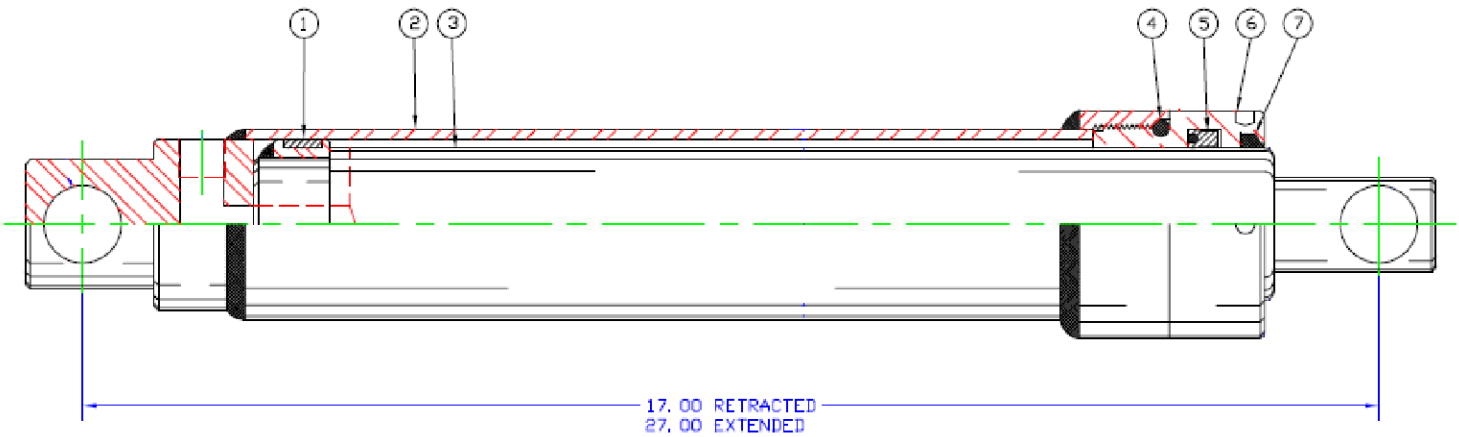
ITEM NO.	PART NUMBER	QTY.	DESCRIPTION
1	15W6147	1	BASE FRAME WELD
2	15W6144	1	UPPER PLATFORM WELD
3	15W6145	1	INNER SCISSORS
4	15W6146	1	OUTER SCISSORS
5	15O333	4	5/8" WASHER
6	15L24803	4	SCISSOR ROLLER
7	15O4471	4	CASTER
8	15O6108	2	5/8" DIA, 1/2-13 THRD x 3-1/2" LG. STAINLESS SHOULDER BOLT
9	15O302	4	1/2" AN WASHER
10	15O3989	2	1/2-13 UNC NYLOK JAM NUT
11	15W6149	2	HANDRAIL WELD, SIDE
12	15W6150	1	HANDRAIL WELD, FRONT
13	15O5590	1	CYLINDER
14	15W5965	1	TOWBAR WELDMENT
15	15O5963	1	SPRING PLUNGER
16	15O596	1	1-14 x 6" LG. C.S.
17	15O2546	1	1-14 NYLOK JAM NUT
18	15O6109	1	HYDRAULIC FOOT PUMP
19	15O255	4	1/2" WASHER
20	15O586	4	1/2-20 NYLOK NUT
21	15O567	4	1/2-20 x 1-1/2 LG. C.S.
22	15W6151	2	HANDRAIL POST WELD
23	15O310	16	3/8-24 x 1-1/4" LG. C.S.

ITEM NO.	PART NUMBER	QTY.	DESCRIPTION
24	15O308	28	3/8-24 NYLOK NUT
25	15O309	16	3/8" AN WASHER
26	15L506	1	CYLINDER END SLEEVE
27	15O592	1	1/2-20 x 3" LG. C.S.
28	15O660	2	1/2-20 NYLOK JAM NUT
29	15L24837	1	CYLINDER MOUNT SLEEVE
30	15O323	1	1/2-20 x 4-1/2 LG. C.S.
31	15W6152	1	LOWER LADDER WELD
32	15W6153	1	UPPER LADDER WELD
33	15O523	12	3/8-24 x 2-1/2" LG. C.S.
34	15O5841	4	THREADED CONNECTOR
35	15O1152	2	SNAP
36	15L24858	2	SAFETY CHAIN
37	15F3061	2	SAFETY PIN
38	15O5836	34	1/4" x 1" SELF-DRILLING
39	15O3235	4	CORNER BUMPER
40	15O204	32	1/4" WASHER
41	15O2080	1	3/8 STREET ELBOW
42	15O6283	1	MODIFIED CHECK VALVE
43	15O246	14	3/8" WASHER
44	15O2110	1	3/8 MALE SWIVEL
R 45	15L26021	4	PIVOT SHAFT
R 46	15O2119	4	3/8-24 x 3/4" LG. C.S. NYLON PATCH
R 47	15O6472	4	3/8-24 x 3/4" LG. BUTTON HEAD C.S.
R 48	15F1027	1	HYDRAULIC HOSE ASSEMBLY

* 15O6716 SEAL KIT FOR 15O6109 FOOT PUMP

ILLUSTRATED PARTS CATALOG

15O5590 ASSEMBLY



**SEAL KIT PART #
15O5598**

ITEM NO.	PART NUMBER	QTY.	DESCRIPTION
1	15O5599	1	WEAR RING
2	15O5600	1	JACKET ASSEMBLY
3	15O5601	1	PISTON ROD ASSEMBLY
4	15O5602	1	'O' RING
5	15O5603	1	POLYPAK (TYPE 'B')
6	15O5604	1	GLAND NUT
7	15O5605	1	ROD WIPER